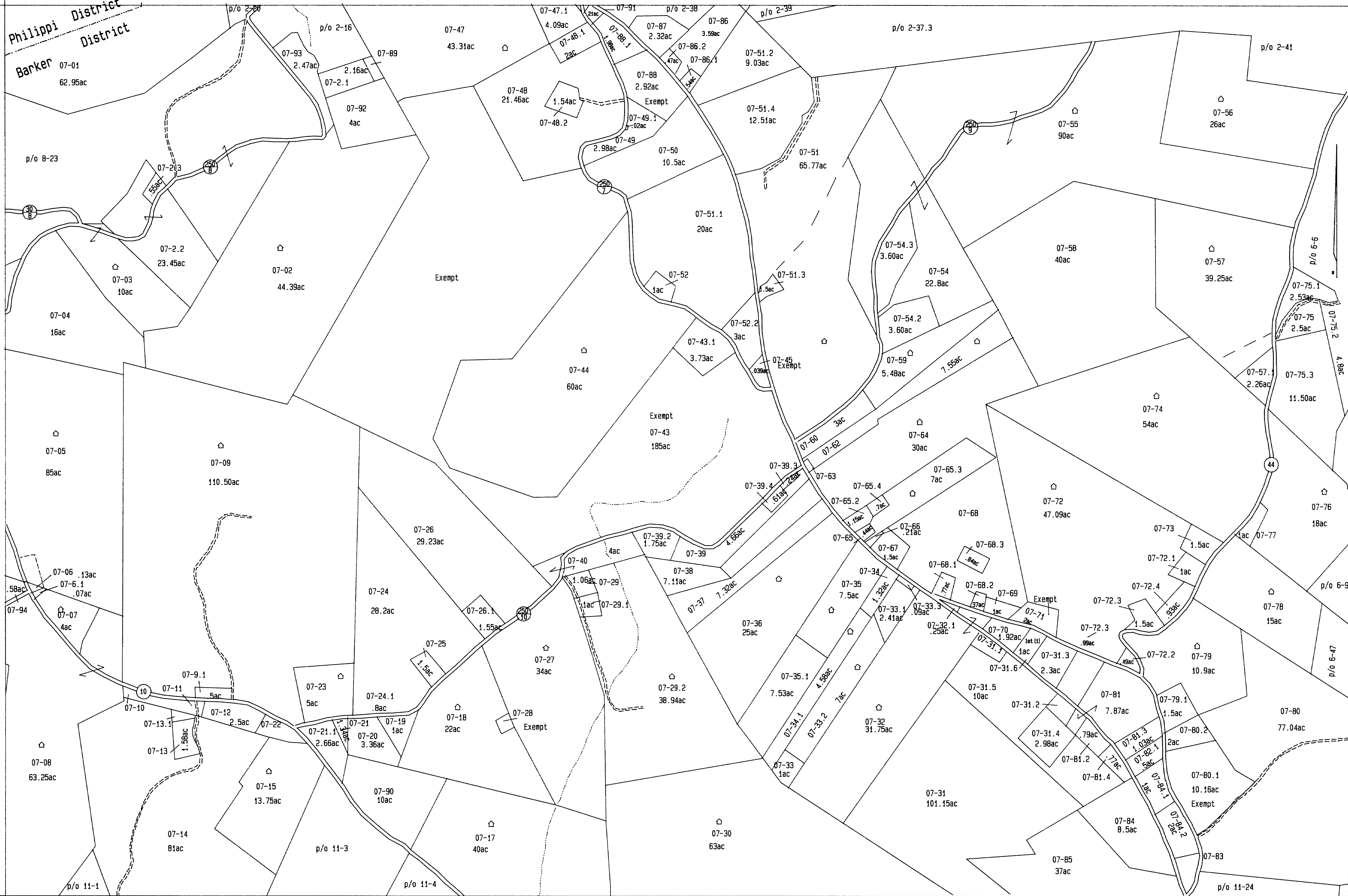
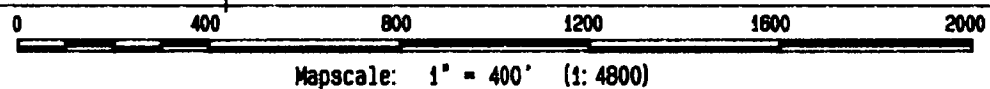


Philippi District
Barker District



Aerial Photo #68



Last Revision 12/03/98

THIS DOCUMENT IS A TAX MAP. It was compiled for purposes of taxation from the most recent available and best of field data as of 12/31/98. The field data on which this map is based is subject to change. The Assessor's Office assumes no liability that might result from use of this document.

Office of the
Barbour County Assessor
Loring Phillips, Assessor

Barker District
(District 01)

07-21	01-02	01-03	Sheet 07
01-08	07	01-06	
01-10	01-11	01-12	