

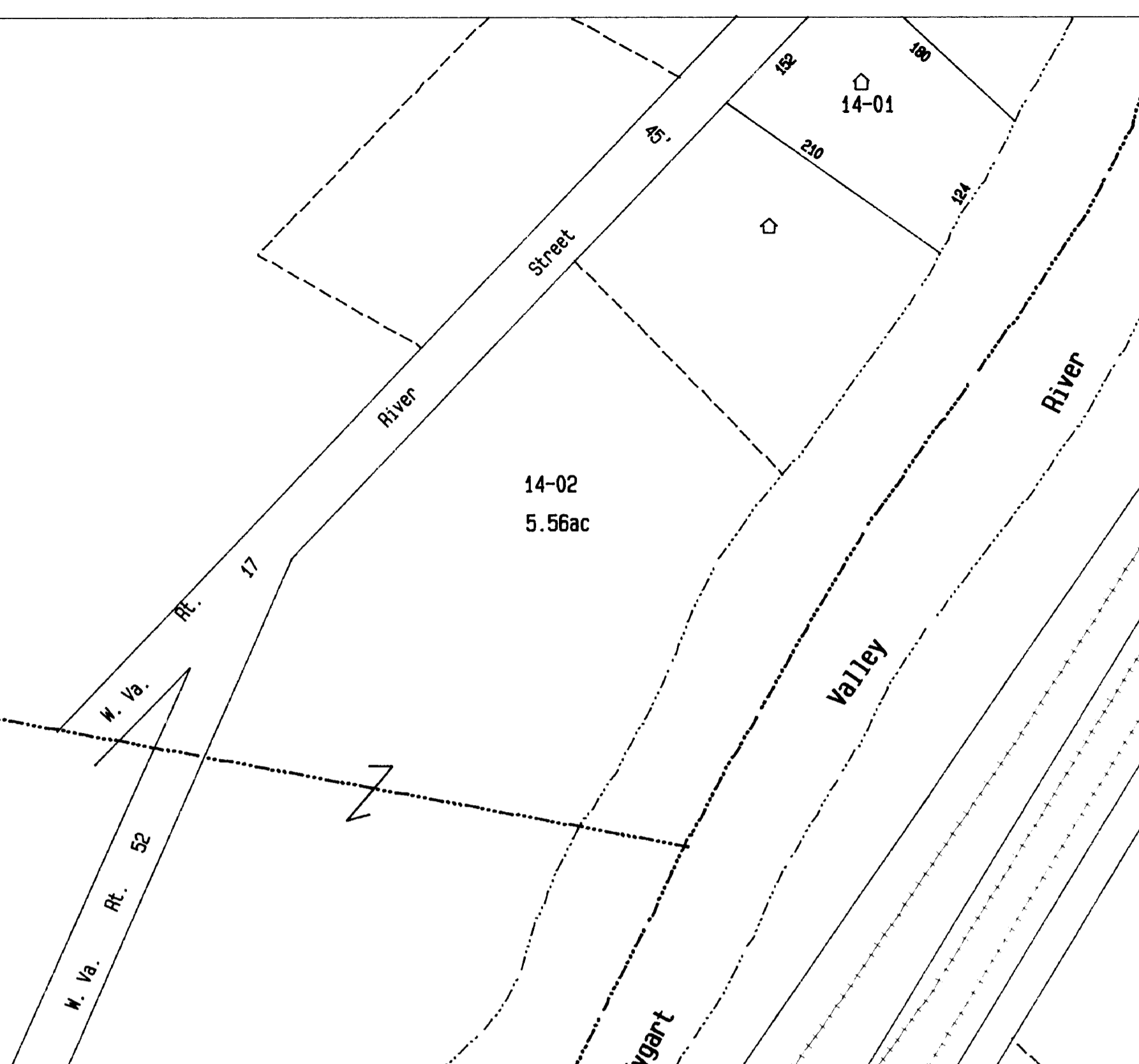
p/o 10-75

Exempt  
14-06  
8ac

p/o 15-1

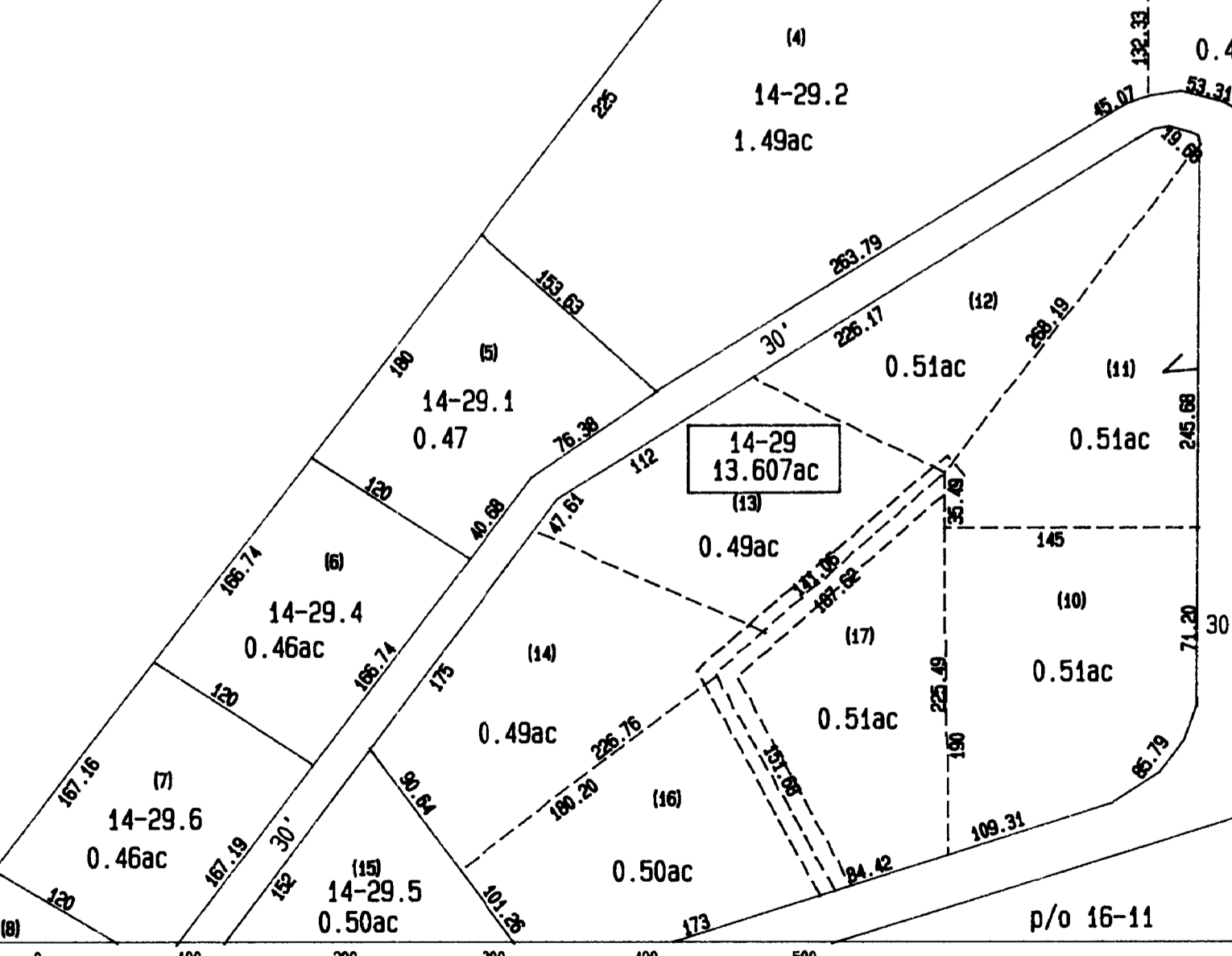
Belington  
Valley  
Corporation  
District

14-02  
5.56ac



14-04  
34ac

Valley  
Belington  
Corporation  
District



14-26.1  
1.01ac

14-29  
13.607ac

Mapscale: 1" = 100' (1:1200)

Last Revision 02/23/99

THIS DOCUMENT IS A TAX MAP. It was compiled for purposes of taxation from available record evidence and has not been field verified. It is not a valid survey plat. The existence of data on this map does not imply any official status to such data. Belongour County Assessor's Office assumes no liability that might result from the inappropriate use of this document.

Office of the  
Barbour County Assessor  
Loring Phillips, Assessor

02-13	02-10	02-11
11-06	14	02-15
11-06	02-16	02-17

Belington Corp. (Dist. 02)