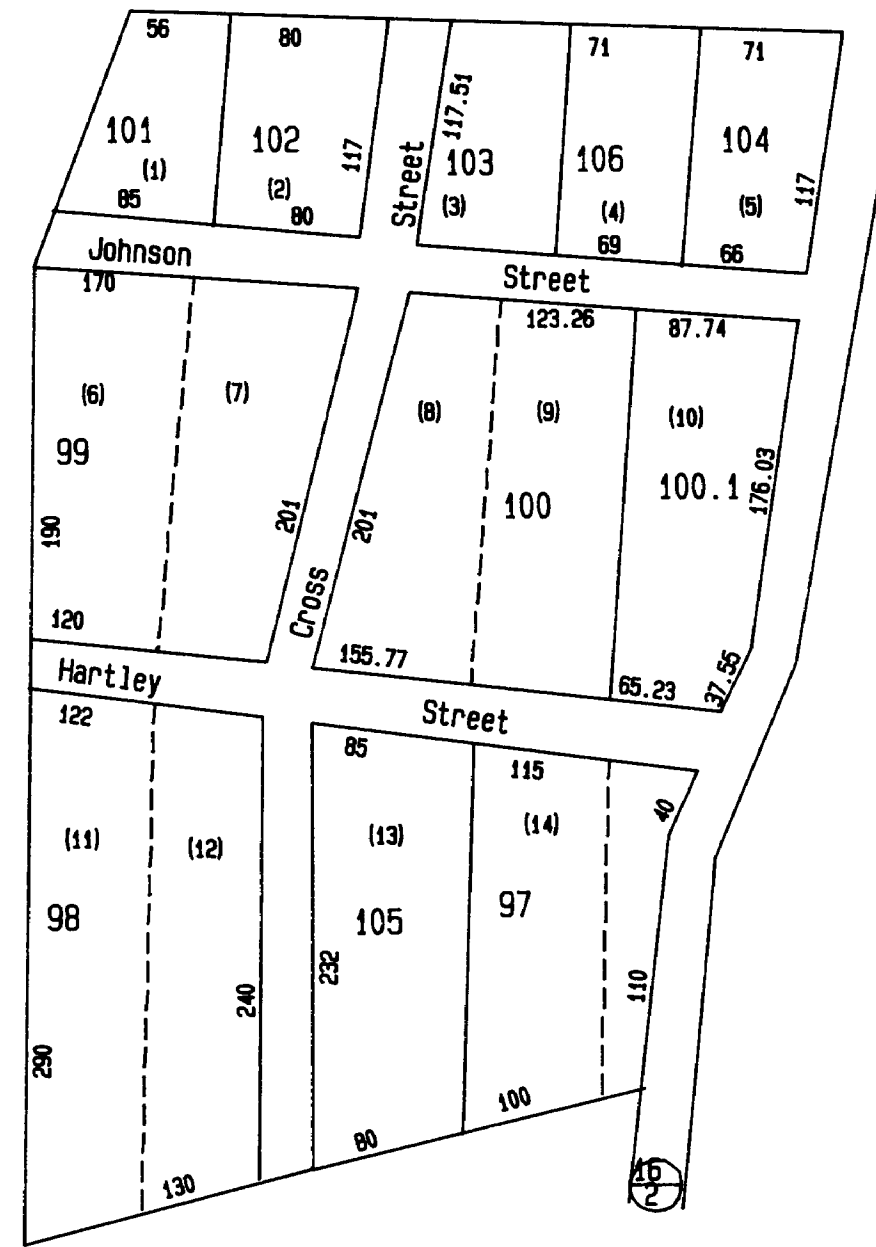




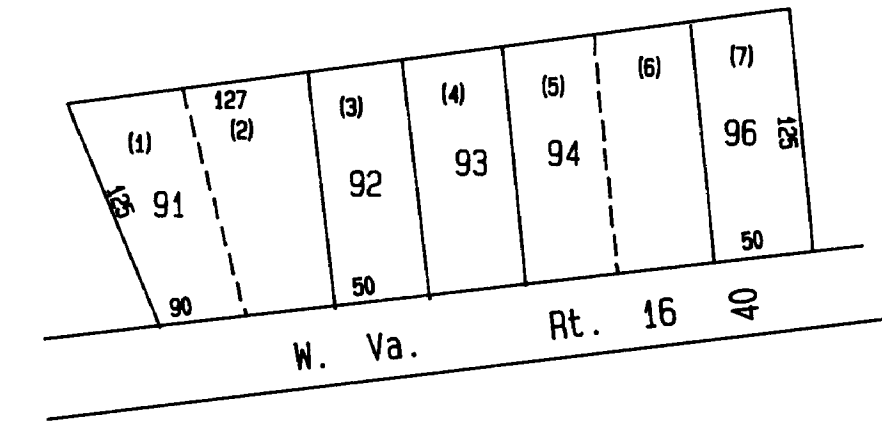
Insert 1



Insert 4

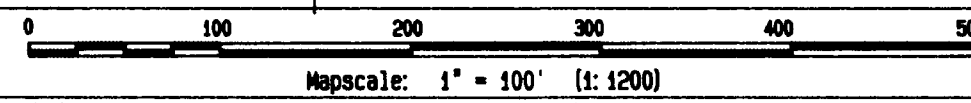


Insert 2



Insert 3

Aerial Photo # 217



Last Revision 01/11/99

Office of the  
Barbour County Assessor  
Loring Phillips, Assessor

09-12	09-12	09-12
09-12	12A	09-12
09-12	09-12	09-12

Pleasant District (Dist. 09)

THIS DOCUMENT IS A TAX MAP. It was compiled for purposes of taxation from available records and is not intended to be a legal survey. No liability shall be assumed by the Assessor for any errors or omissions that might result from the inappropriate use of this document.