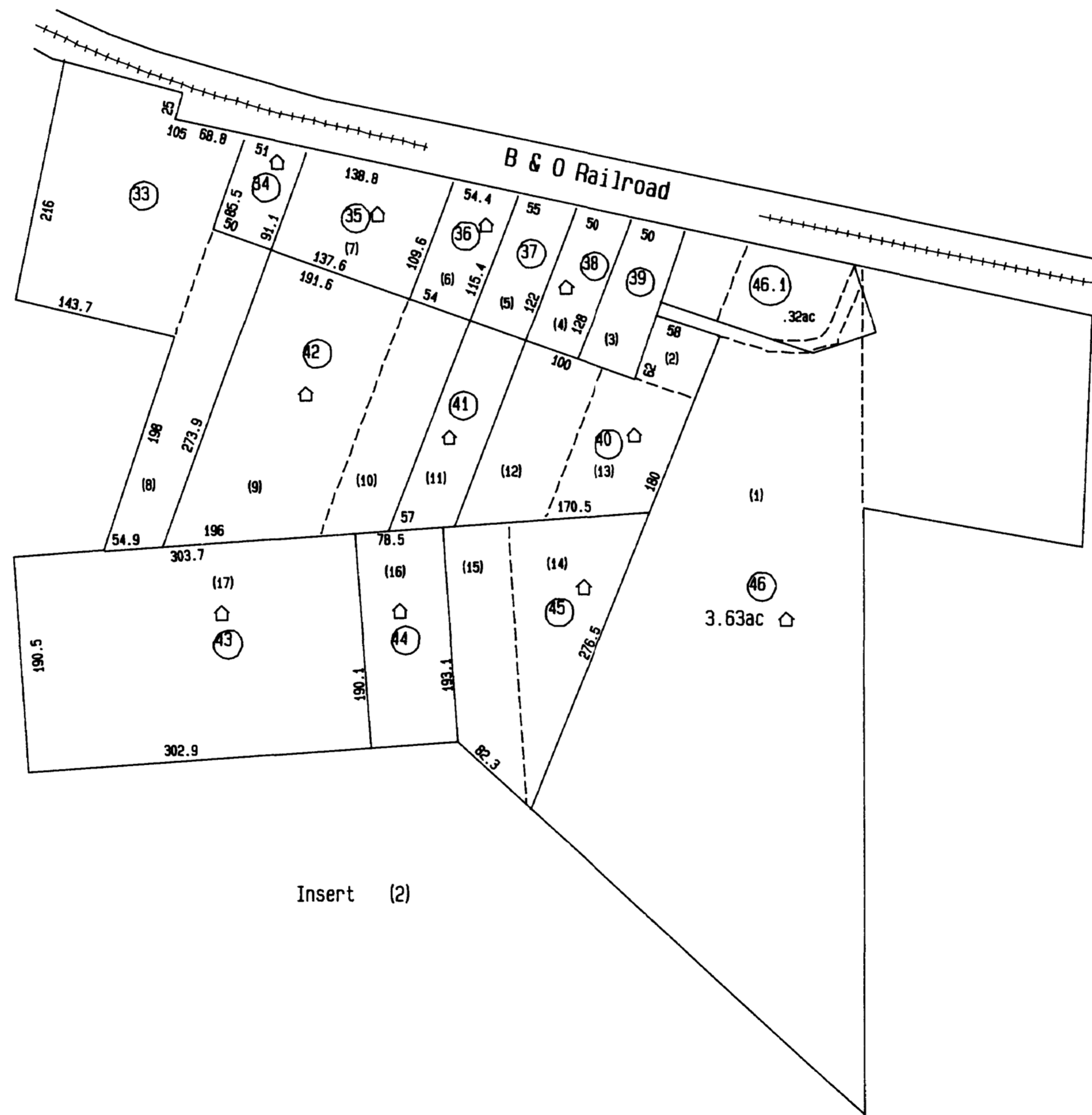
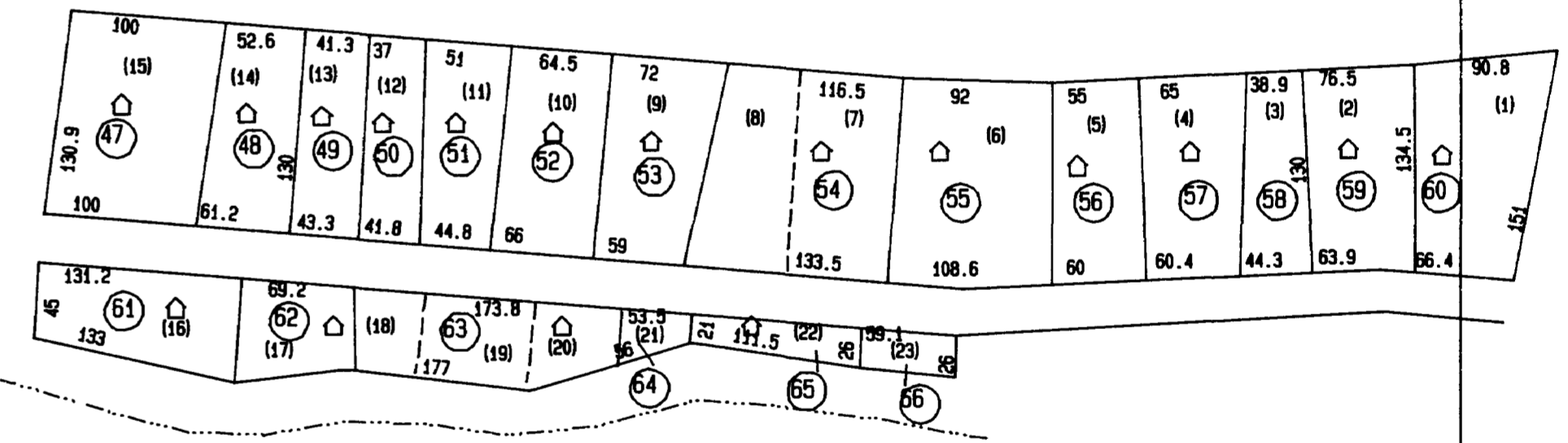


Insert (1)

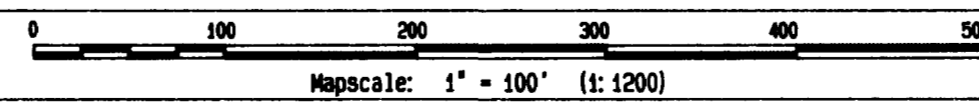


Insert (2)



Insert (3)

Aerial Photo # 217



revision: May/'92

THIS DOCUMENT IS A TAX MAP. It was compiled for purposes of taxation from available records and has not been field verified. It is not a valid survey. The existence of data on this map does not imply any official action by the Barbour County Assessor's Office. The Assessor's Office assumes no liability that might result from the inappropriate use of this document.

Office of the
Barbour County Assessor
Loring Phillips, Assessor

09-12 09-12 09-12
09-12 12B 09-12
09-12 09-12 09-12

Pleasant District (Dist. 09)