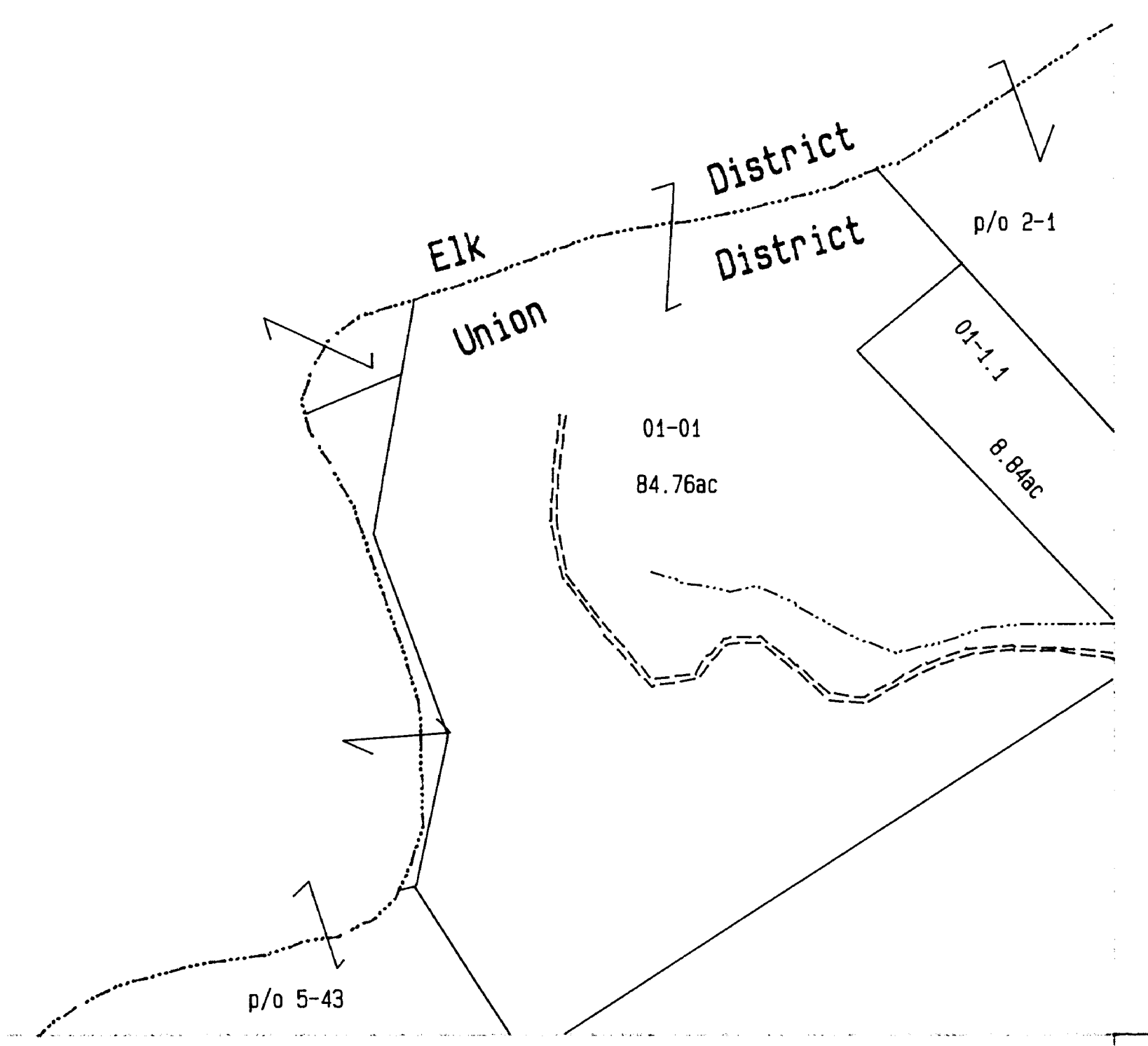
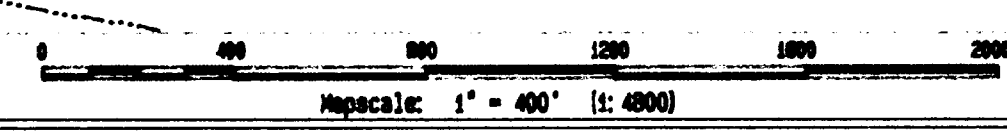


Aerial Photo # 146

E1k
p/o 5-42
District



Last Revision 06/15/92

THIS DOCUMENT IS A TAX MAP. It was compiled for purposes of taxation from
aerial photos and other data. The Assessor's Office assumes no liability for errors or omissions.
Office assumes no liability that might result from use of this document.

Office of the
Barbour County Assessor
Loring Phillips, Assessor

Union District
(District 10)

04-10	04-10	04-14
04-10	01	10-02
04-15	10-05	10-04

Sheet 01