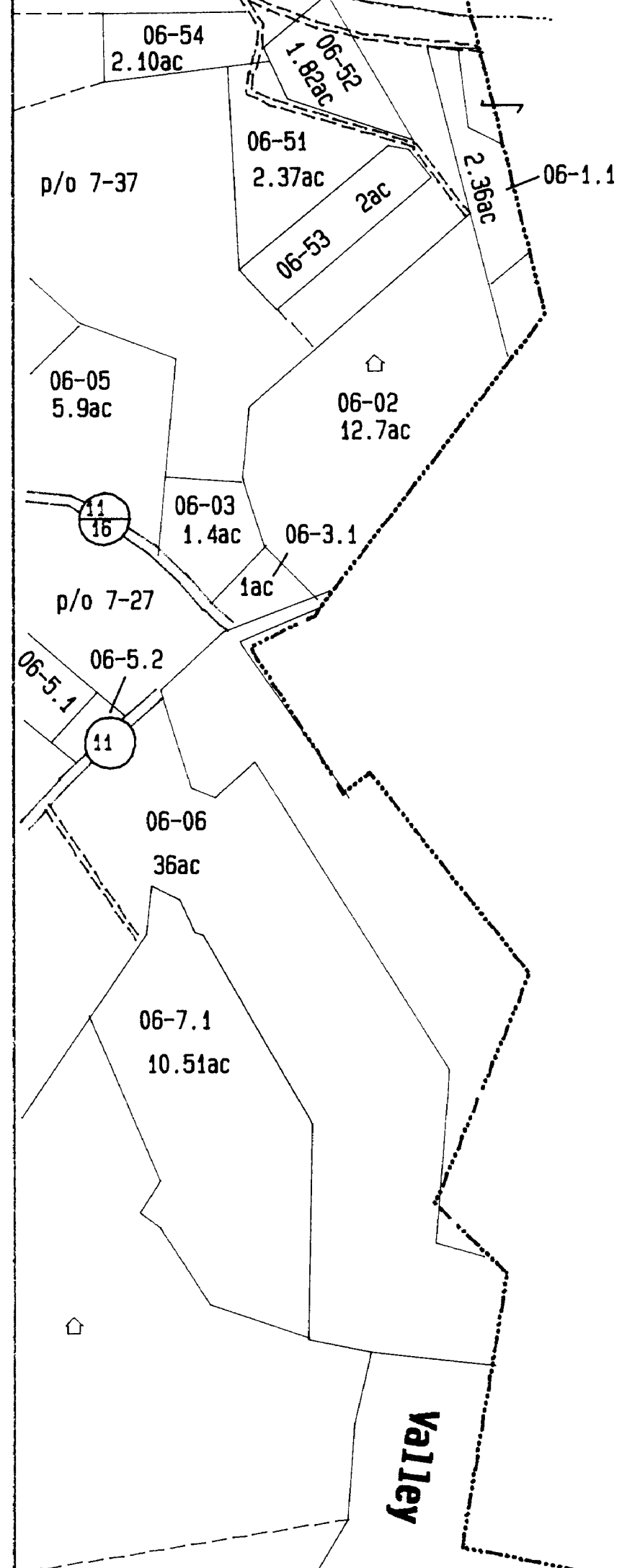


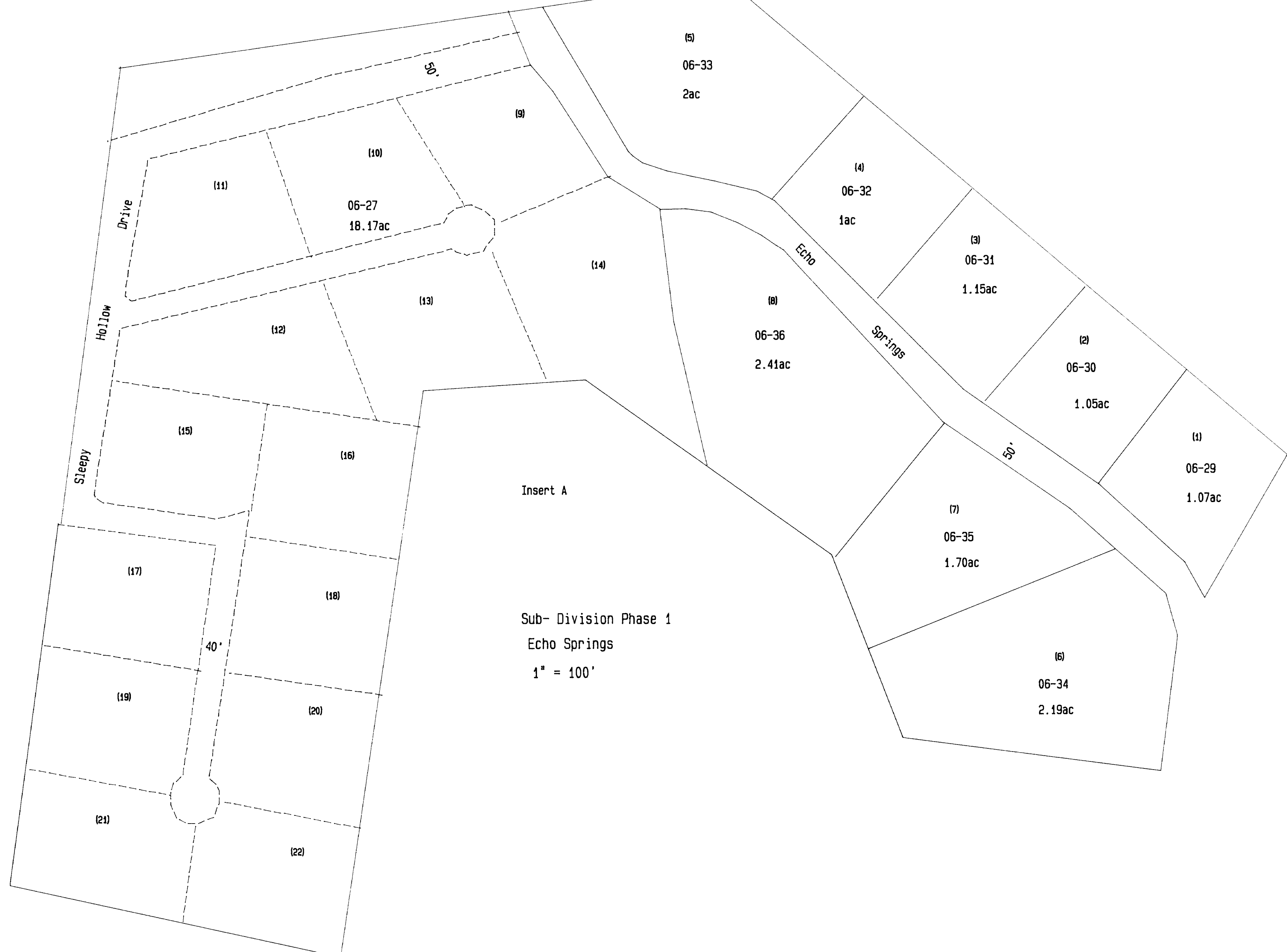
Barker District



Belington Corporation

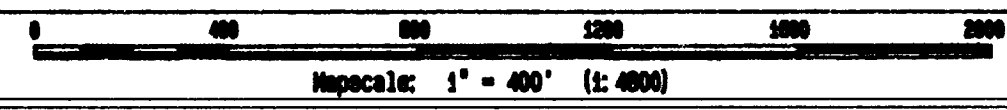
Valley District

District



Sub-Division Phase 1  
Echo Springs  
1" = 100'

Aerial Photo #23, 25, 36



Last Revision 02/16/95

THIS DOCUMENT IS A TAX MAP. It was compiled for purposes of taxation from aerial photos and other sources. The Assessor is not responsible for any errors or omissions that might result from the improper use of this document.

Office of the  
Barbour County Assessor  
Loring Phillips, Assessor

11-07	01-17	Bel. Corp.	
11-07	06	Bel. Corp.	Valley District (Dist. 11)
11-12	11-13	Bel. Corp.	