

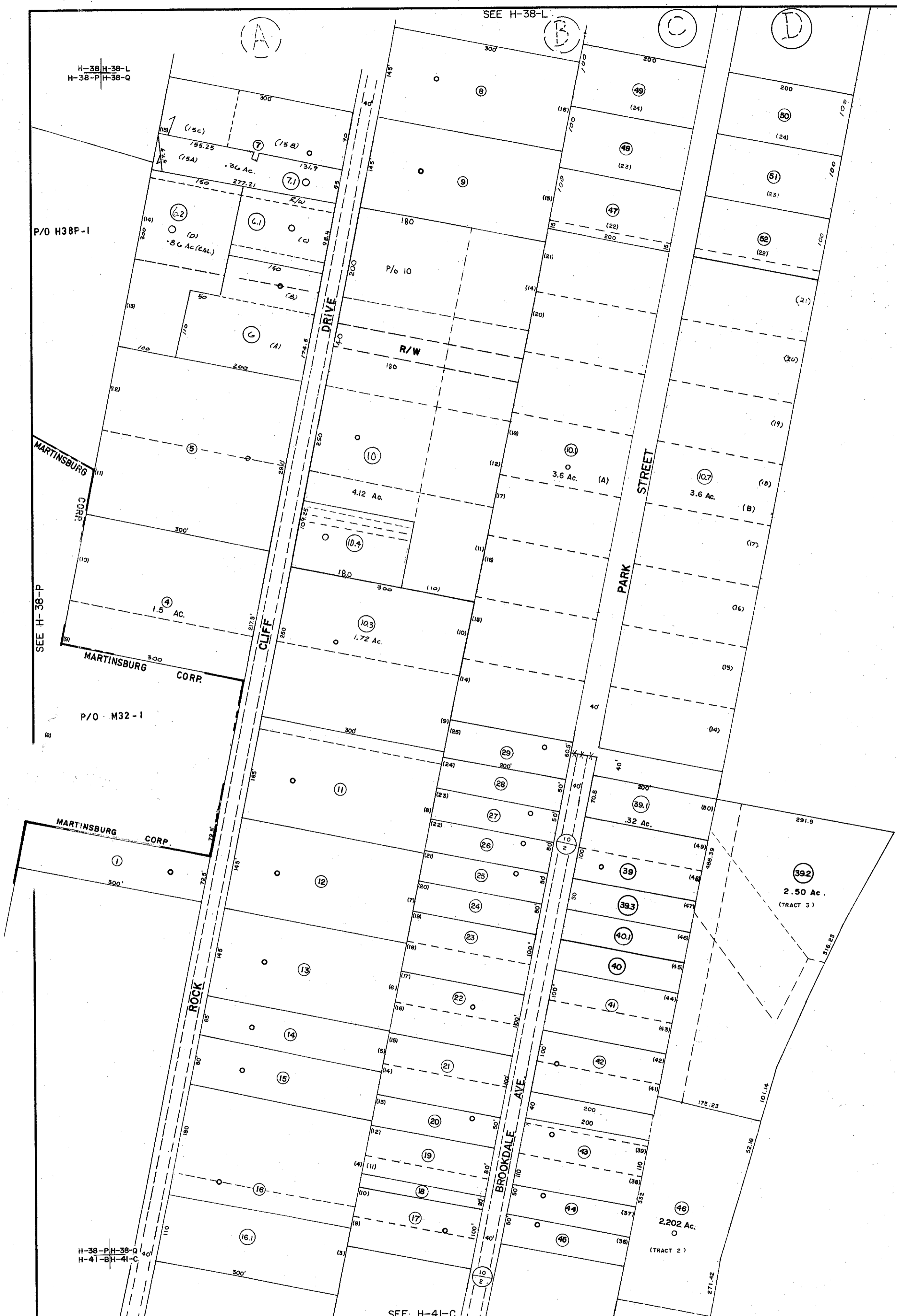
SEE H-38-L

H-38-L
H-38-Q

H-38-L
H-38-P
H-38-Q

H-38-P
H-38-Q
H-41-B
H-41-C

H-38-Q
H-41-C
H-41



For Tax Purposes Only

Prepared by
KEYSTONE MAPPING COMPANY, INCORPORATED
 Photogrammetric Engineers
 YORK, PENNSYLVANIA

Legend

- Property line ————
- Edge of pavement or roadway - - - - -
- Corporation line ————
- District line ————
- County line ————
- Original lot line ————
- Deed lot number in parenthesis (15)
- Parcel or index number in circle (20)
- Improvement ————
- Railroad ————

Revisions

1	April 1965 — Rodgers	9	4485	781	17	SLS INC.	9/10/98	DSW
2	2/28/73 — J.M.	10	10-1-89	TRL	18			
3	JAN 74 — PAM	11	OGIS 2-21-92	TL	19			
4	McCLURE 10/11/76	12	OGIS 1-23-93	JEB	20			
5	5-1-79	13	OGIS 11-93	RD	21			
6	REV. TO 7/81 DR. 7/82	14	O.G.I.S 10-28-94	J.E.B	22			
7	Revised to 7-1-82	15	O.G.I.S 9-1-95	J.E.B	23			
8	Revised to 1-1-84	16	O.G.I.S 1-1-97	J.E.B	24			

COUNTY OF BERKELEY
 WEST VIRGINIA
 Office of Assessor

H38Q

Date, Aerial Photography: April, 1958
 Photo No: 530
 Date, Map: March, 1959
 Scale: 1"=100'

SEE H-38

