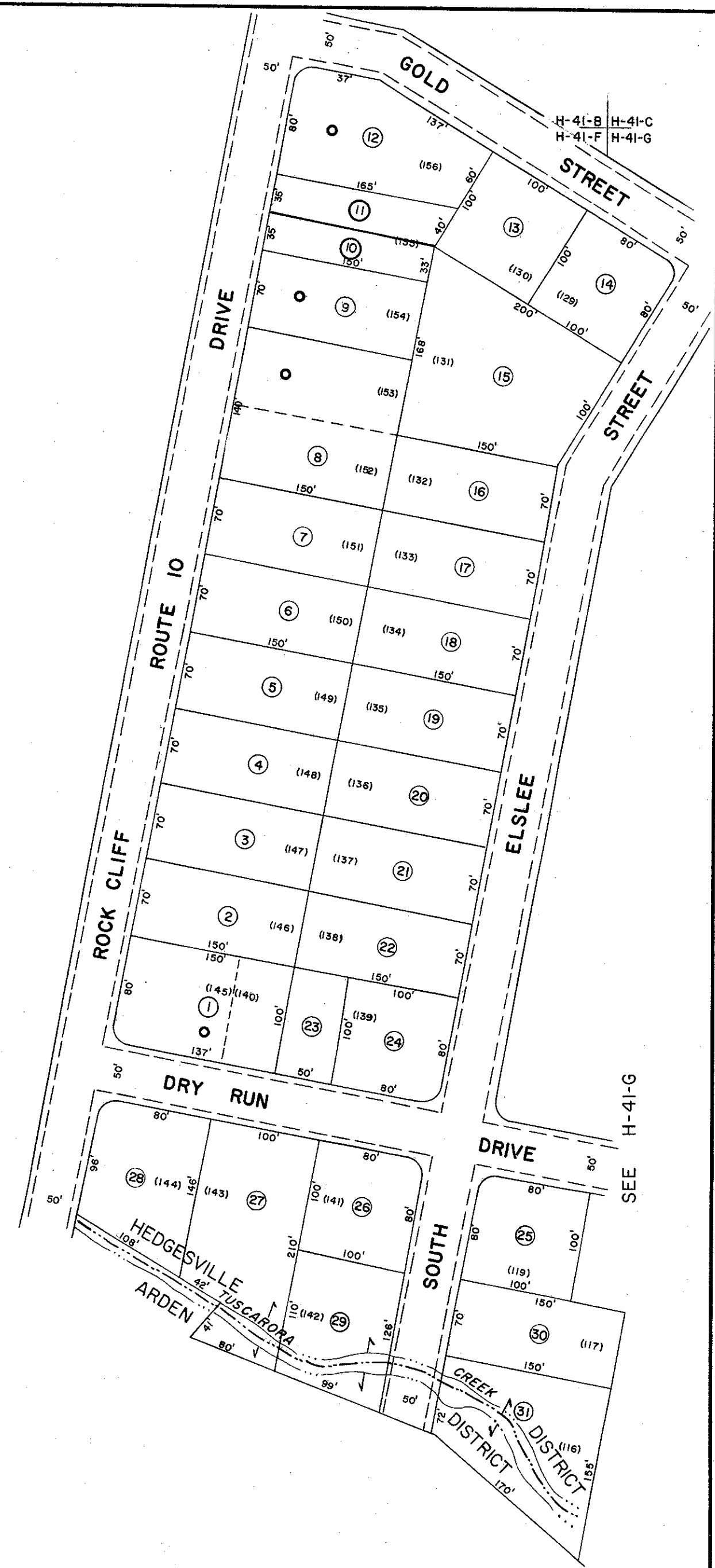


H-41 H-41-B
H-41 H-41-F

SEE H-41-B

SEE H-41



SEE H-41-G

H-41 H-41-F
H-41 H-41

SEE H-41

H-41-F H-41-G
H-41 H-41



For Tax Purposes Only

Prepared by
KEYSTONE MAPPING COMPANY, INCORPORATED
Photogrammetric Engineers
YORK, PENNSYLVANIA

Legend

Property line	Original lot line
Edge of pavement or roadway	Deed lot number in parenthesis (15)
Corporation line	Parcel or index number in circle (9)
District line	Improvement
County line	Railroad

Revisions

1	April 1965 — Rodgers	9	17
2	REV. TO 7/81 DR. 7/82 NCS	10	18
3	REVISED TO 7-1-82	11	19
4		12	20
5		13	21
6		14	22
7		15	23
8		16	24

COUNTY OF BERKELEY
WEST VIRGINIA
Office of Assessor

H 41 F

Date, Aerial Photography: April, 1958
Photo No: 530
Date, Map: Mar. 1959
Scale: 1" = 100'