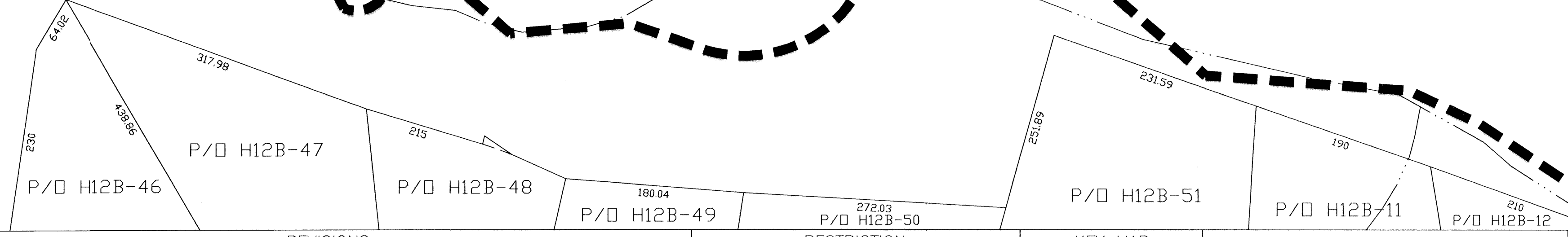


MORGAN COUNTY
HEDGESVILLE DISTRICT



For Tax Purposes Only
Prepared by
SMART DATA STRATEGIES
sds-inc.com
FRANKLIN, TN

LEGEND	
Property line	—————
ROW	—————
Water property	—————
Railroad ROW	—————
Original lot line	- - - - -
Road easement	- - - - -
Corporation line	—————
District line	—————
County line	—————
State line	—————
Parcel or index number in circle	(26)
Deed lot number (in parenthesis)	(15)

REVISIONS	
1	CURRENT TO JULY 1, 2002
2	CURRENT TO JULY 1, 2003
3	CURRENT TO JULY 1, 2004
4	CURRENT TO JULY 1, 2005
5	
6	
7	
8	
9	
10	
11	
12	
13	
14	
15	
16	

RESTRICTION

All tax maps created under the provisions of reappraisal legislation are the property of the Berkeley County and the reproduction, copying, distribution or sale of such tax maps or any copies thereof without the written permission of the Berkeley County Assessor is prohibited by law.

KEY MAP		
H6J	H6	H6L
H6N	H6P	H6R
H12A	H12B	H12C

COUNTY OF BERKELEY
WEST VIRGINIA
Office of Assessor

H6P

Date, Aerial Photography: _____ Date, Map: _____
Photo No: _____ Scale: 1" = 100'

