

SEE 13  
1"=400'

SEE 13D

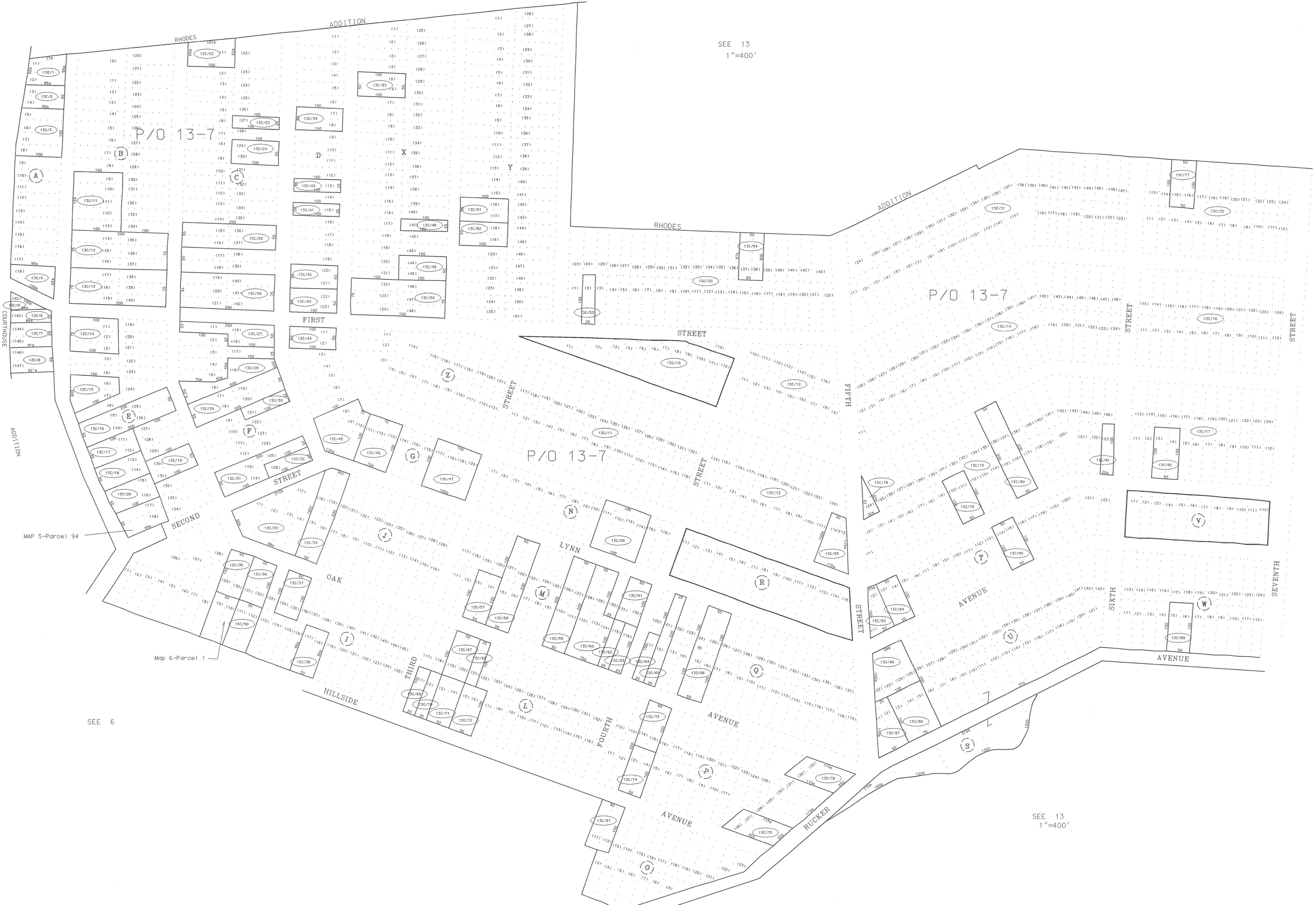
SEE 13  
1"=400'

SEE 5

5

13D

SEE 6



For Tax Purposes Only

Prepared by  
McKenzie Engineering Corporation  
402 Church Street  
Summersville, WV 26651

LEGEND

Property line	Original lot line	(15)
Edge of pavement or roadway	Deed lot number	(99)
Corporation line	Parcel or index number	o
District line	Improvement	—
County line	Railroad	—+—

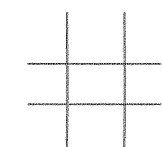
REVISIONS

1
2
3
4
5
6
7
8

RESTRICTION

All tax maps created under the provisions of reappraisal legislation are the property of the Assessor of Boone County, West Virginia and the reproduction, copying, modification, distribution or sale of such tax maps or any copies thereof without the written permission of the Boone County Assessor is prohibited by law

KEY MAP



BOONE COUNTY  
STATE OF WEST VIRGINIA  
Office of Assessor

MADISON CORP.

MAP NO: 13C  
Date, Aerial Photography: 4-25-62 Date, Map: 12-18-64  
Photo No: 4-3-1061, 1062, 1063, 1064 Scale: 1" = 100'