

Part of Parcel 1, Map 6

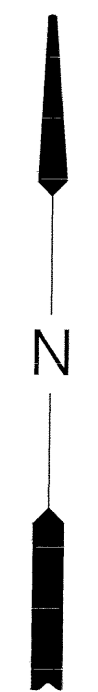
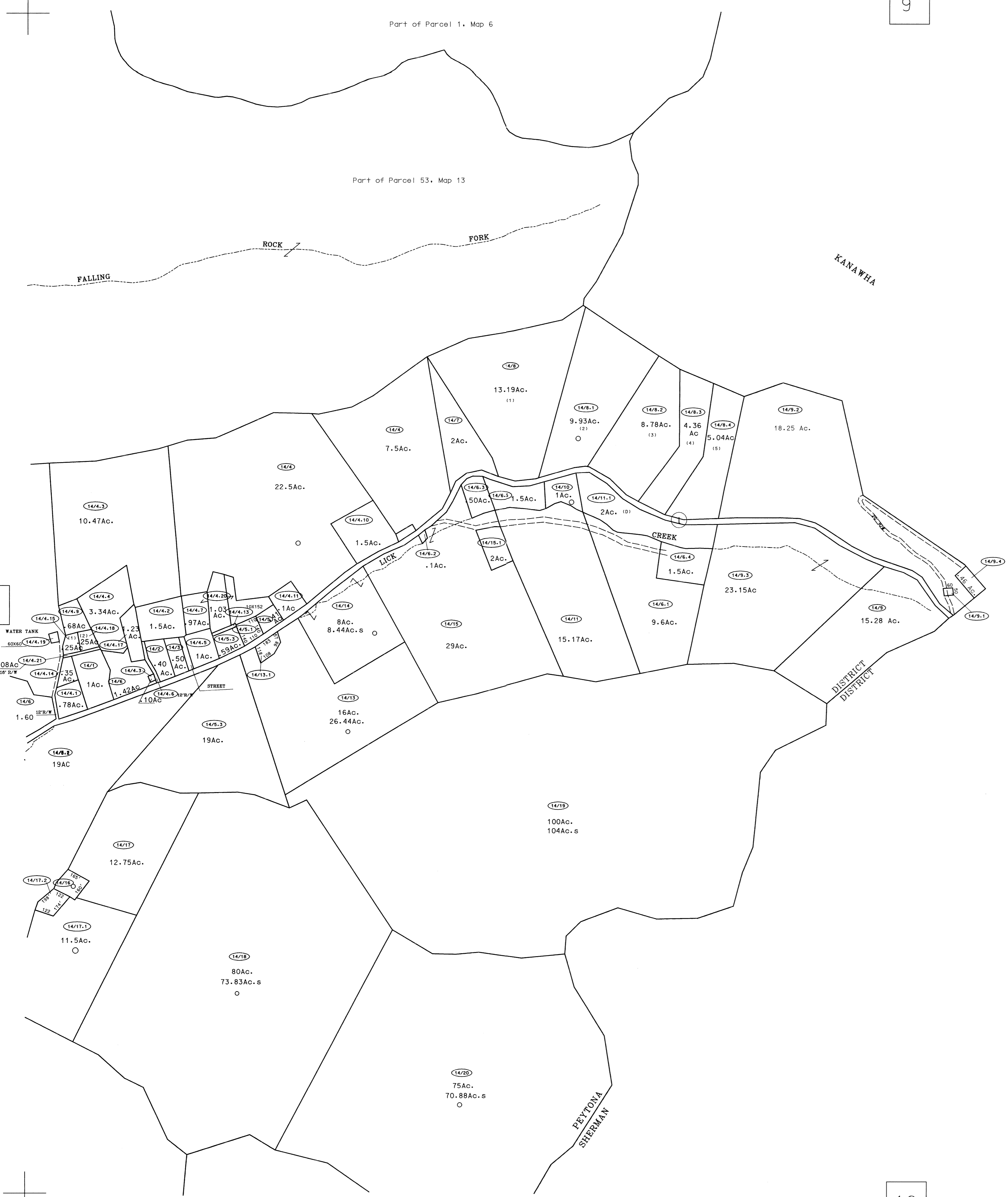
Part of Parcel 53, Map 13

FALLING

ROCK FORK

KANAWHA

COUNTY



For Tax Purposes Only

Prepared by
 McKenzie Engineering Corporation
 402 Church Street
 Summersville, WV 26651

LEGEND

Property line	-----	Original lot line	-----
Edge of pavement or roadway	-----	Deed lot number	(15)
Corporation line	-----	Parcel or index number	(99)
District line	-----	Improvement	o
County line	-----	Railroad	+

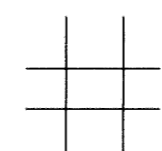
REVISIONS

1	
2	
3	
4	
5	
6	
7	
8	

RESTRICTION

All tax maps created under the provisions of reappraisal legislation are the property of the Assessor of Boone County, West Virginia and the reproduction, copying, modification, distribution or sale of such tax maps or any copies thereof without the written permission of the Boone County Assessor is prohibited by law

KEY MAP



BOONE COUNTY
 STATE OF WEST VIRGINIA
 Office of Assessor

PEYTONA DISTRICT

MAP NO: 14
 Date, Aerial Photography: 4-25-62 Date, Map: 3-17-63
 Photo No: 27-366&367 28-354&355 Scale: 1" = 400'