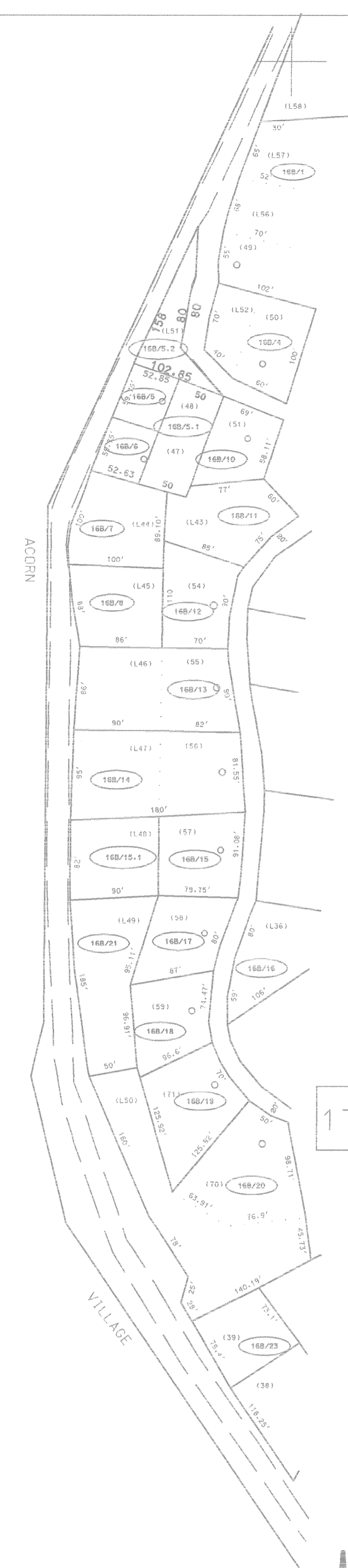


16A



SEE 16

17F

17G

For Tax Purposes Only

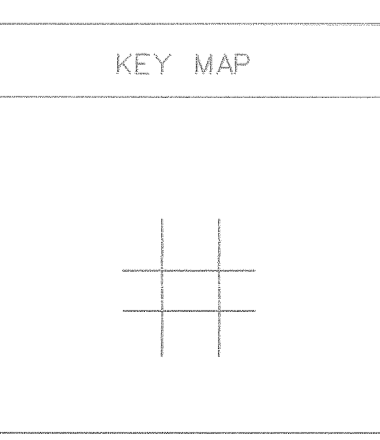
Prepared by  
 McKenzie Engineering Corporation  
 402 Church Street  
 Summersville, WV 26651

LEGEND	
Property line	Original lot line
Edge of pavement or roadway	Deed lot number
Corporation line	Parcel or index number
District line	Improvement
County line	Railroad

REVISIONS
1
2
3
4
5
6
7
8

RESTRICTION

All tax maps created under the provisions of reappraisal legislation are the property of the Assessor of Boone County, West Virginia and the reproduction, copying, modification, distribution or sale of such tax maps or any copies thereof without the written permission of the Boone County Assessor is prohibited by law



BOONE COUNTY  
 STATE OF WEST VIRGINIA  
 Office of Assessor

PEYTONA DISTRICT

MAP NO: 16B  
 Date, Aerial Photography: 11-23-62  
 Photo No: 60-1325-1326  
 59-1336-1337

Date, Map: 3-13-63  
 Scale: 1" = 100'