

SEE 14

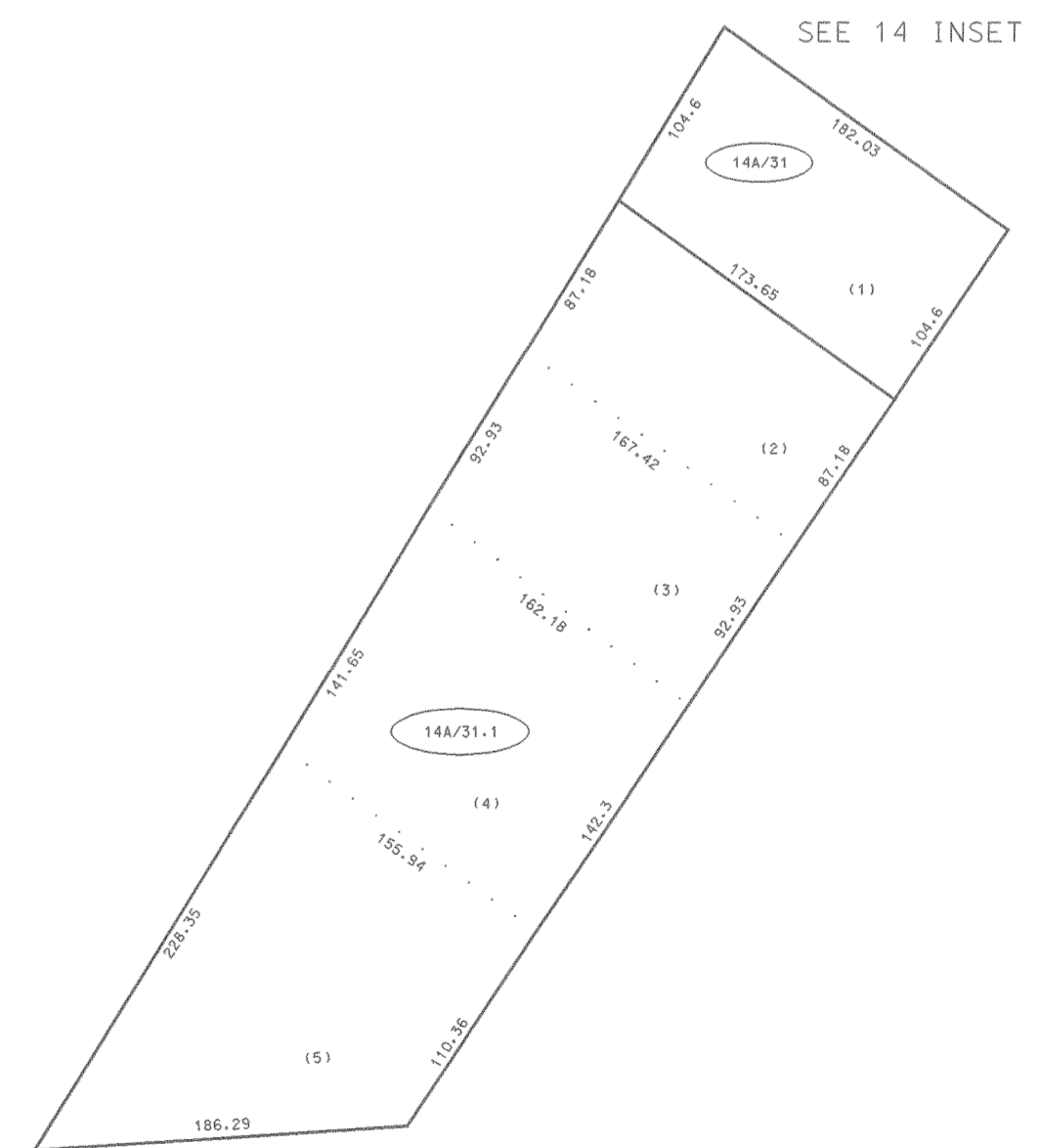
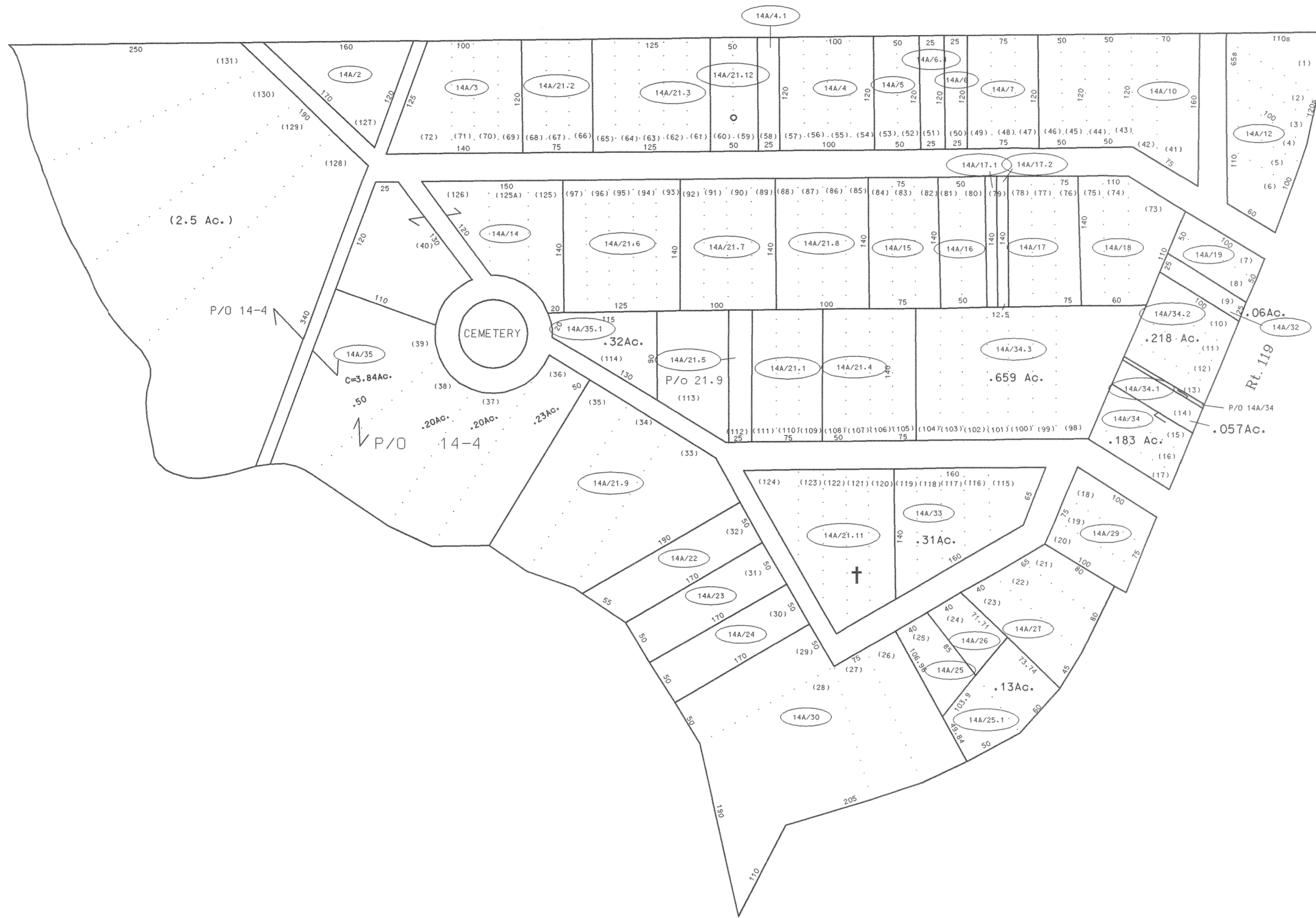
SEE 14

SEE 14

SEE 14

SEE 14 INSET 1

SEE 19



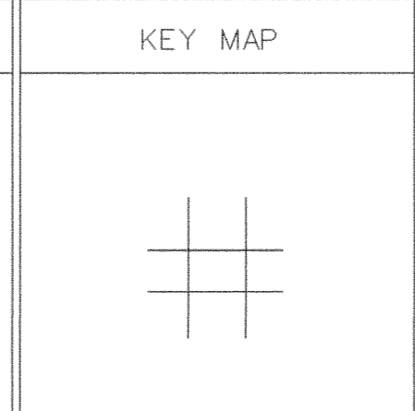
For Tax Purposes Only
 Prepared by
 McKenzie Engineering Corporation
 402 Church Street
 Summersville, WV 26651

LEGEND	
Property line	Original lot line
Edge of pavement or roadway	Deed lot number (15)
Corporation line	Parcel or index number 99
District line	Improvement 0
County line	Railroad

REVISIONS	
1	
2	
3	
4	
5	
6	
7	
8	

RESTRICTION

All tax maps created under the provisions of reappraisal legislation are the property of the Assessor of Boone County, West Virginia and the reproduction, copying, modification, distribution or sale of such tax maps or any copies thereof without the written permission of the Boone County Assessor is prohibited by law



BOONE COUNTY
 STATE OF WEST VIRGINIA
 Office of Assessor

WASHINGTON DISTRICT
 MAP NO: 14A
 Date, Aerial Photography: 4-25-62 Date, Map: 1-8-65
 Photo No: 22-51348514 23-4958496 Scale: 1"=100'
 22-51248513 23-4968497