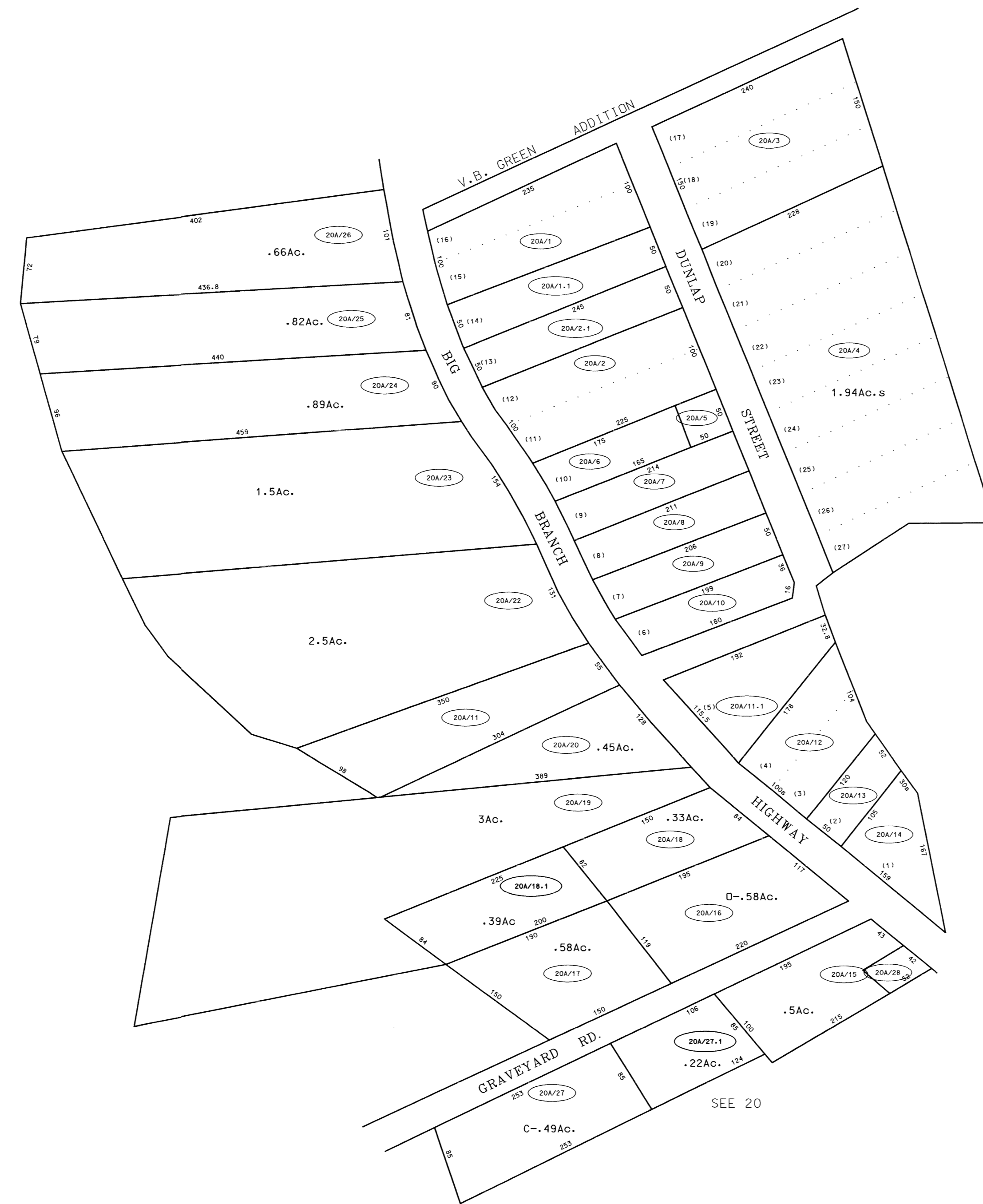


SEE 20

SEE 20

SEE 20



SEE 20



For Tax Purposes Only

Prepared by  
 McKenzie Engineering Corporation  
 402 Church Street  
 Summersville, WV 26651

LEGEND

Property line	—————	Original lot line	- - - - -
Edge of pavement or roadway	— · — · —	Deed lot number	(15)
Corporation line	- - - - -	Parcel or index number	⊙
District line	- · - · -	Improvement	○
County line	- - - - -	Railroad	—+—+—

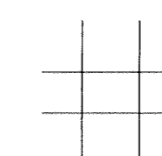
REVISIONS

1
2
3
4
5
6
7
8

RESTRICTION

All tax maps created under the provisions of reappraisal legislation are the property of the Assessor of Boone County, West Virginia and the reproduction, copying, modification, distribution or sale of such tax maps or any copies thereof without the written permission of the Boone County Assessor is prohibited by law

KEY MAP



BOONE COUNTY  
 STATE OF WEST VIRGINIA  
 Office of Assessor

WASHINGTON DISTRICT

MAP NO: 20A  
 Date, Aerial Photography: 4-25-62  
 Photo No: 23-496&497 24-466&467  
 23-497&498 24-465&466  
 Date, Map: 1-5-65  
 Scale: 1"=100'