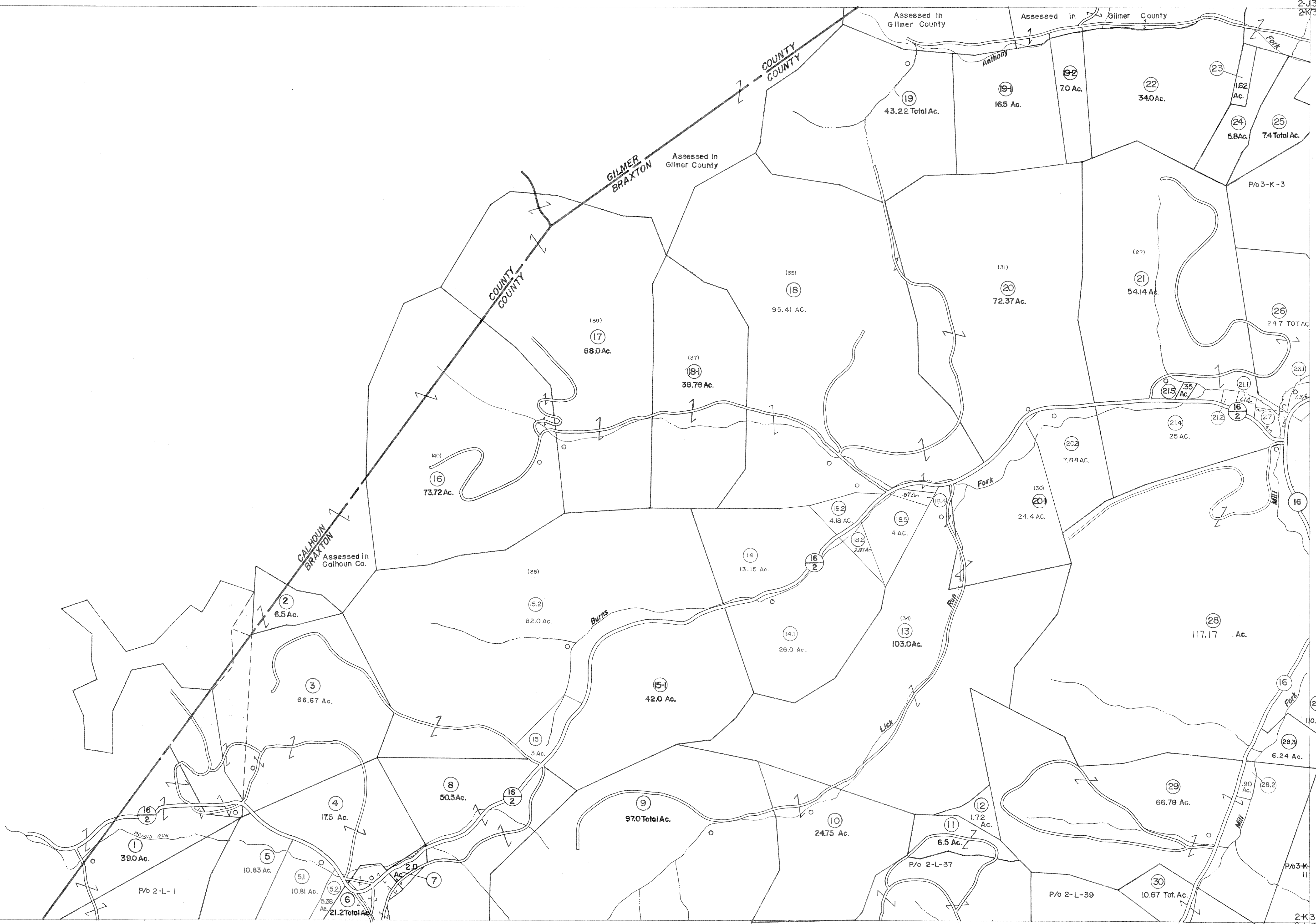


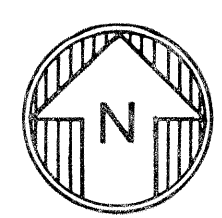
2-J
2-K

2-J-3-J
2-K-3-K



2-K
2-L

2-K-3-K
2-L-3-L



For Tax Purposes Only

Prepared by
VOGT, IVERS AND ASSOCIATES
 ENGINEERS-ARCHITECTS
 CHARLESTON, W.VA.
 CINCINNATI, OHIO

Property line	—————	Original lot line	-----
Edge of pavement or roadway	-----	Deed lot number	(15)
Corporation line	-----	Parcel or index number	(16)
District line	-----	Improvement	o
County line	-----	Railroad	+

Revisions	
1	PARCELS 15-1, 18-1, 18-2, 19-1, 19-2
2	20-1 ADDED 8-27-83
3	3/31/74 BARR
4	Rev to 7-80
5	" " 7-1-83
6	7/1/84 RLB
7	Revised to 7-1-87
8	
9	REV. TO 1-1-88 NCS
10	5-1-97 J.E.B
11	4-15-98 J.E.B
12	5-1-99 J.E.B
13	ESI 5/30/01 REK
14	ESI 6/12/02 REK
15	5/7/05 S&H
16	

KEY MAP

2 J	3 J
2 K	3 K
2 L	3 L

BRAXTON COUNTY

STATE OF WEST VIRGINIA

Office of Assessor

DISTRICT
BIRCH DISTRICT

SHEET NO: **2-K**

Date, Aerial Photography: 4-22-60
Photo No: BR-22-25

Date, Map: 9-27-62
Scale: 1" = 400'