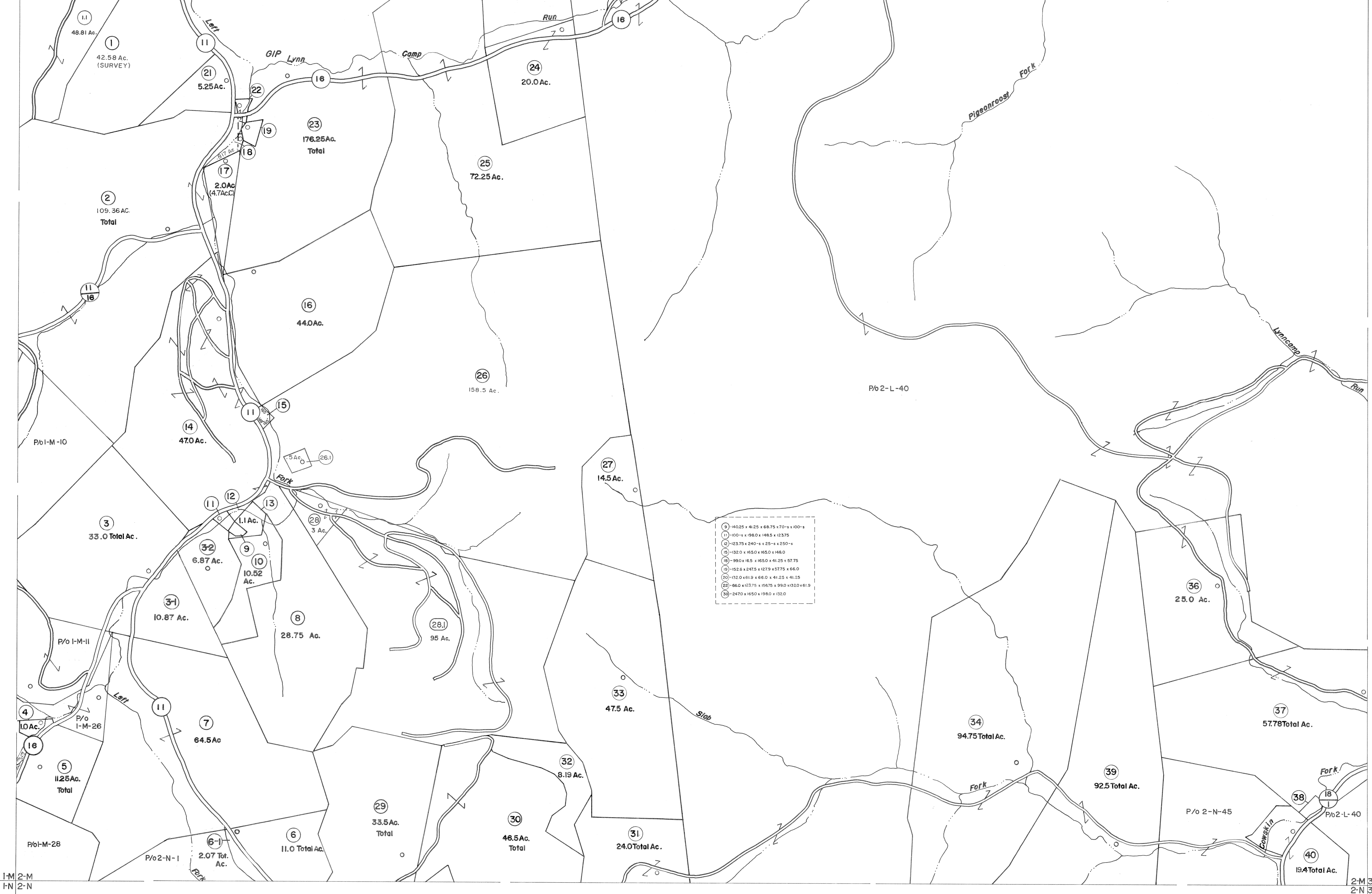


1-L 2-L  
1-M 2-M

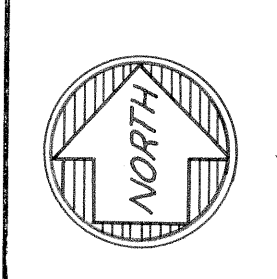
2-L 3-L  
2-M 3-M



9-140.25 x 41.25 x 68.75 x 70'-s x 100'-s  
 10-100'-s x 198.0 x 148.5 x 123.75  
 11-123.75 x 240'-s x 25'-s x 250'-s  
 12-132.0 x 165.0 x 165.0 x 148.0  
 13-99.0 x 18.5 x 165.0 x 41.25 x 57.75  
 14-152.6 x 247.5 x 127.5 x 57.75 x 66.0  
 15-132.0 x 61.9 x 66.0 x 41.25 x 41.25  
 16-66.0 x 123.75 x 156.75 x 99.0 x 152.0 x 61.9  
 17-247.0 x 165.0 x 198.0 x 132.0

1-M 2-M  
1-N 2-N

2-M 3-M  
2-N 3-N



For Tax Purposes Only

Prepared by  
**VOGT, IVERS AND ASSOCIATES**  
 ENGINEERS-ARCHITECTS  
 CHARLESTON, W.VA.  
 CINCINNATI, OHIO

Property line	—————
Edge of pavement or roadway	—————
Corporation line	—————
District line	—————
County line	—————

Original lot line	-----
Deed lot number	(15)
Parcel or index number	(99)
Improvement	o
Railroad	+

1	PARCELS 3-1, 3-2, 6-1, 36-1,	9	0.6.1.S	1-1-95	J.E.B	17
2	ADDED 6-27-63	10		5-1-97	J.E.B	18
3	3/19/76 BARB	11	5/7/05		S.B.H	19
4	Revised 7-80	12				20
5	7-1-83 C.B.S.	13				21
6	7/1/84 RLB	14				22
7	Revised 7-1-87	15				23
8	EXCALIBUR GRAPHICS 5/93	16				24

Revisions	
9	0.6.1.S 1-1-95 J.E.B
10	5-1-97 J.E.B
11	5/7/05 S.B.H
12	
13	
14	
15	
16	
17	
18	
19	
20	
21	
22	
23	
24	

KEY MAP		
1-L	2-L	3-L
1-M	2-M	3-M
1-N	2-N	3-N

**BRAXTON COUNTY**  
 STATE OF WEST VIRGINIA  
 Office of Assessor

DISTRICT  
**BIRCH DISTRICT**

SHEET NO: 2-M

Date, Aerial Photography: 4-22-60

Date, Map: 9-21-62

Photo No: BR-22-23 Scale: 1" = 400'