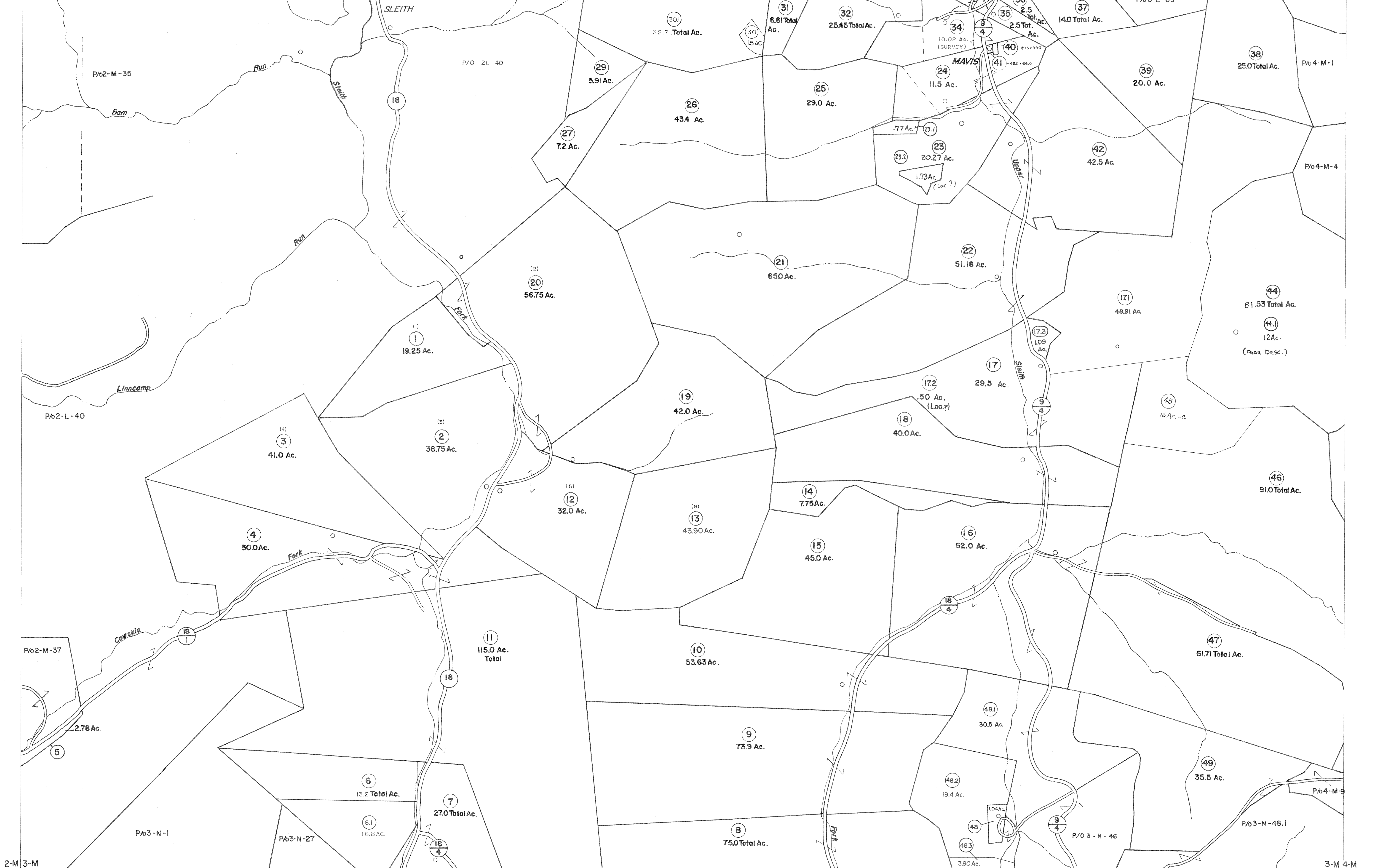


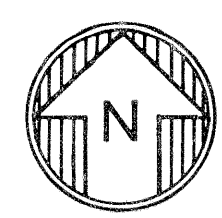
2-L 3-L
2-M 3-M

3-L 4-L
3-M 4-M



2-M 3-M
2-N 3-N

3-M 4-M
3-N 4-N



For Tax Purposes Only

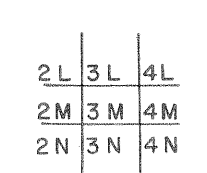
Prepared by
VOGT, IVERS AND ASSOCIATES
 ENGINEERS-ARCHITECTS
 CHARLESTON, W.VA.
 CINCINNATI, OHIO

Property line ———
 Edge of pavement or roadway - - - -
 Corporation line - - - - -
 District line - - - - -
 County line - - - - -

Original lot line - - - - -
 Deed lot number (15) ———
 Parcel or index number (18) ———
 Improvement ———
 Railroad ———

Revisions		
1	3/4/76	BAH
2	Rev to 7-80	CBG
3	" " 7-1-83	CBG
4	7/1/84	RLB
5	Revised 6-7-187	SEB
6	EXCALIBUR GRAPHICS 5/93	
7	O.G.I.S 6-1-96	J.E.B
8	4-15-98	J.E.B
9	5-1-99	J.E.B
10	ESI 6/13/02	REK
11	5/2/04	SBH
12	5/3/05	SBH
13		
14		
15		
16		
17		
18		
19		
20		
21		
22		
23		
24		

KEY MAP



BRAXTON COUNTY

STATE OF WEST VIRGINIA

Office of Assessor

DISTRICT

BIRCH DISTRICT

SHEET NO: 3-M

Date, Aerial Photography: 4-20-60
Photo No: BR-22-13

Date, Map: 9-27-62
Scale: 1" = 400