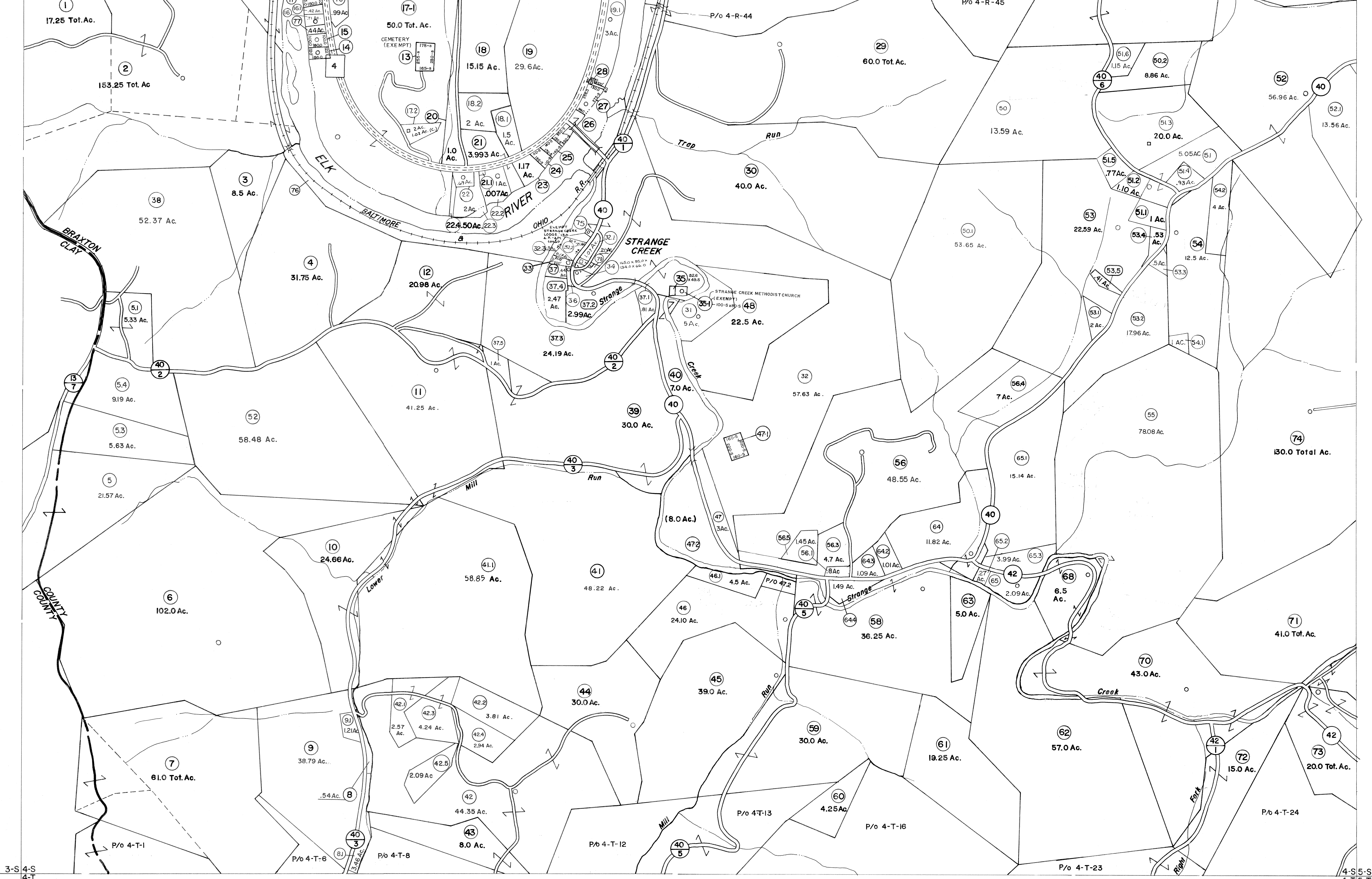


3-R4-R
3-S4-S

4-R5-R
4-S5-S



3-S4-S
4-T

4-S5-S
4-T5-T

For Tax Purposes Only

Prepared by
VOGT, IVERS AND ASSOCIATES
ENGINEERS-ARCHITECTS
CHARLESTON, W.VA.
CINCINNATI, OHIO

Property line	—————	Original lot line	-----
Edge of pavement or roadway	-----	Deed lot number	(15)
Corporation line	-----	Parcel or index number	(10)
District line	-----	Improvement	○
County line	-----	Railroad	—+—+—+—

1	PARCEL 17-1 ADDED 6-24-63	9	Revised to 7-1-87	17	5-1-99 J.E.B
2	PARCEL 49- DELETED	10	REV. TO 1-1-88 NCS	18	ESI 4-27-00 REK
3	PARCEL 47-2 ADDED 10-3-63	11	OGIS 2/9/91 DSH	19	ESI 5/30/01 REK
4	P/W	12	EXCALIBUR GRAPHICS 5/93	20	ESI 6/13/02 REK
5	Rev to 7-80	13	O.G.I.S. 1-1-95 J.E.B	21	5/3/2003 S.B.H
6	" " 7-1-83	14	OGIS 5/8/95 SAJ	22	5/2/04 S.B.H
7	7/1/84 RLB	15	5-1-97 J.E.B	23	5/2/05 S.B.H
8	Revised to 7-1-85	16	4-15-98 J.E.B	24	4/9/06 S.B.H

Revisions			
17	5-1-99	J.E.B	
18	4-27-00	REK	
19	5/30/01	REK	
20	6/13/02	REK	
21	5/3/2003	S.B.H	
22	5/2/04	S.B.H	
23	5/2/05	S.B.H	
24	4/9/06	S.B.H	

KEY MAP

3 R	4 R	5 R
3 S	4 S	5 S
4 T	5 T	

BRAXTON COUNTY

STATE OF WEST VIRGINIA

Office of Assessor

DISTRICT

BIRCH DISTRICT

SHEET NO: 4-S

Date, Aerial Photography: 4-22-60
Photo No: BR-14-200

Date, Map: 9-25-62
Scale: 1" = 400'