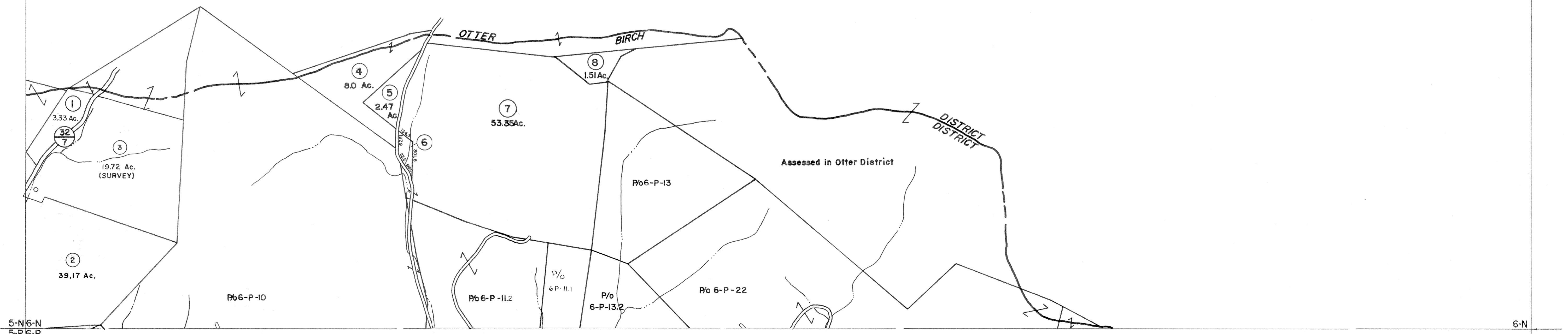


6-N

6-N



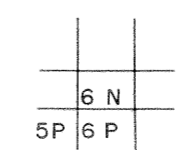
For Tax Purposes Only

Prepared by
VOGT, IVERS AND ASSOCIATES
 ENGINEERS-ARCHITECTS
 CHARLESTON, W.VA.
 CINCINNATI, OHIO

Property line	—————	Original lot line	-----
Edge of pavement or roadway	-----	Deed lot number	(15)
Corporation line	-----	Parcel or index number	(99)
District line	-----	Improvement	o
County line	-----	Railroad	—+—

Revisions			
1	PW	9	ESI 5/30/01 REK 17
2	REV TO 7-80	10	5/2/04 SBH 18
3	" " 7-1-83	11	4/12/07 SBH 19
4	7/1/84 RLB	12	
5	Revised to 7-1-87	13	
6	REV. TO 1-1-88	14	NCS 22
7	OGIS 2/9/91	15	DSH 23
8	5-1-99 J.E.B	16	

KEY MAP



BRAXTON COUNTY

STATE OF WEST VIRGINIA
 Office of Assessor

DISTRICT

BIRCH DISTRICT

SHEET NO: 6-N

Date, Aerial Photography: 4-22-60 Date, Map: 9-23-62
 Photo No: BR-14-170 Scale: 1" = 400'