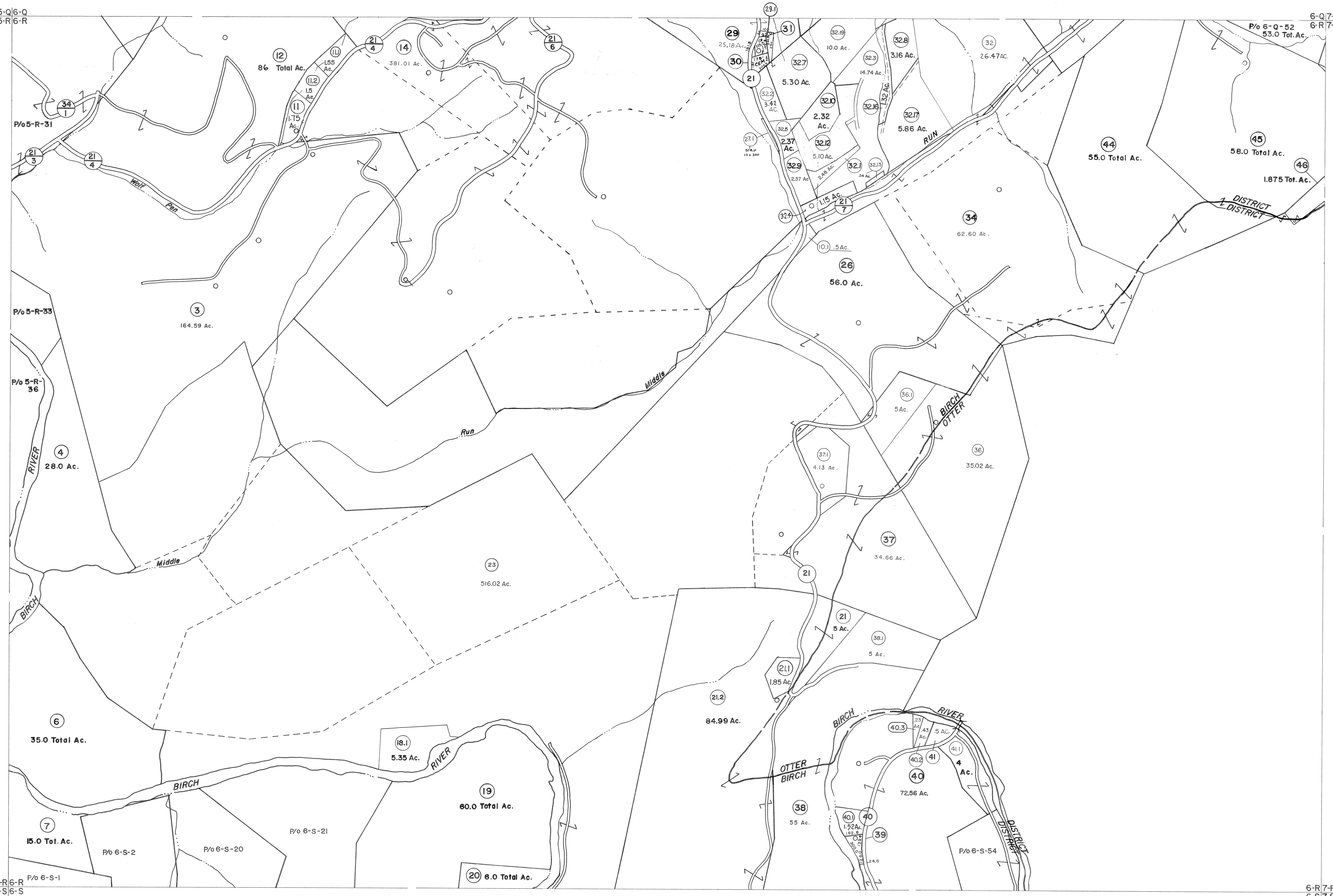


5-Q-6-Q
5-R-6-R

6-Q-7-Q
6-R-7-R

5-R-6-R
5-S-6-S

6-R-7-R
6-S-7-S



For Tax Purposes Only

Prepared by
VOGT, IVERS AND ASSOCIATES
 ENGINEERS-ARCHITECTS
 CHARLESTON, W.VA.
 CINCINNATI, OHIO

Property line	—————
Edge of pavement or roadway	———
Corporation line	-----
District line	-----
County line	-----

Original lot line	-----
Deed lot number	(15)
Parcel or index number	(99)
Improvement	○
Railroad	—+—+—+—

1	DW
2	Revised to 7-80
3	" " 7-1-83
4	7/1/84 RLB
5	Revised to 7-1-85
6	Revised to 7-1-85
7	Revised to 7-1-87
8	

Revisions		
9	REV. TO 1-1-88	NCS
10	OGIS 2/9/91	DSH
11	EXCALIBUR GRAPHICS 5/93	
12	O.G.I.S. 1-1-95	J.E.B
13	OGIS 4/26/95	SAJ
14	O.G.I.S. 6-1-96	J.E.B
15	4-15-98	J.E.B
16		

17	ESI 6/13/02	REK
18	4/30/03	SBH
19	5/2/04	SBH
20	4/30/05	SBH
21		
22		
23		
24		

KEY MAP

50 60 70
 80 90 100
 110 120 130

BRAXTON COUNTY
 STATE OF WEST VIRGINIA
 Office of Assessor

DISTRICT
BIRCH DISTRICT

SHEET NO: **6-R**

Date, Aerial Photography: 4-22-60
 Photo No: BR-14-167

Date, Map: 9-22-62
 Scale: 1" = 400'