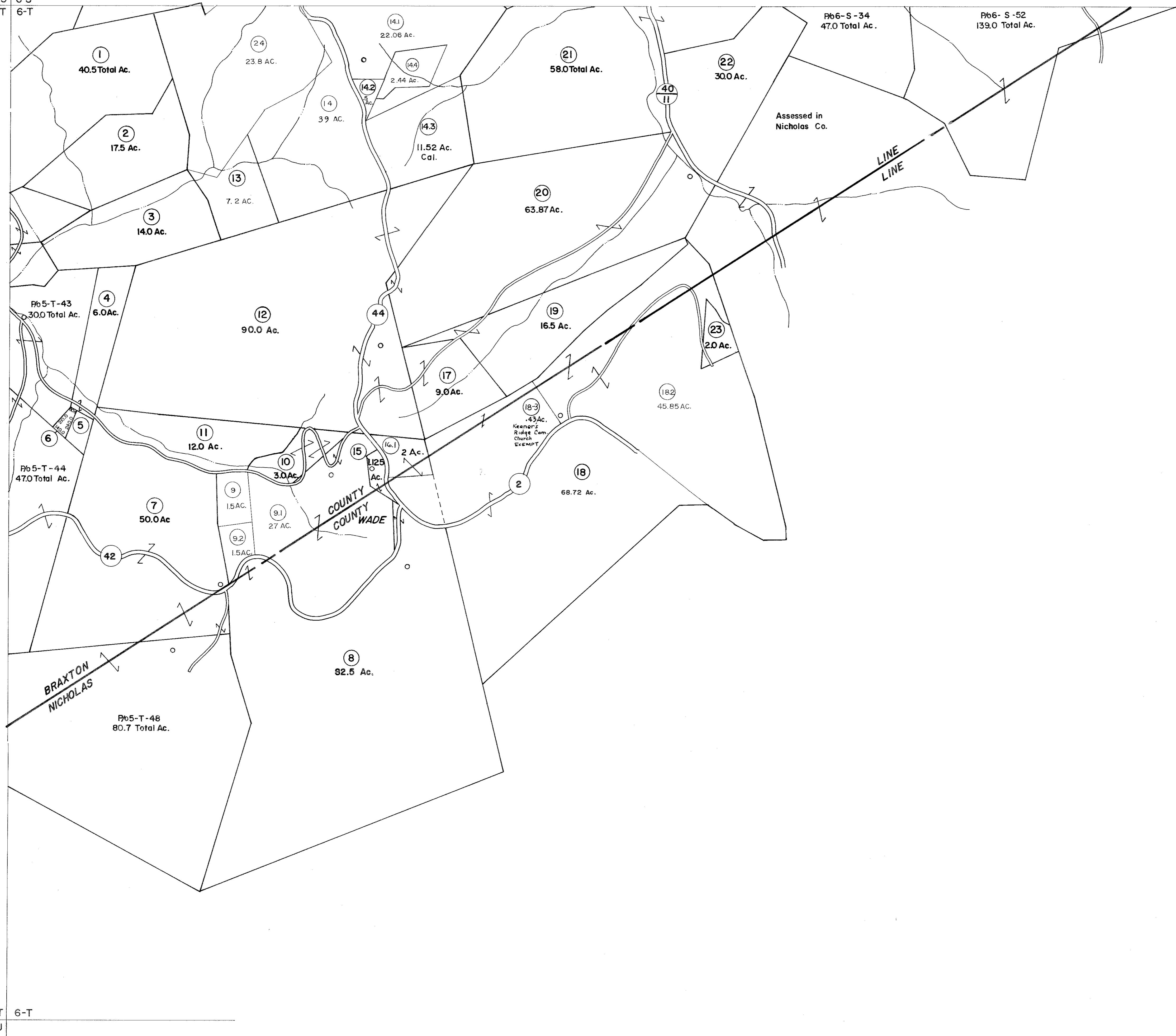


5-S 6-S
5-T 6-T

6-S 7-S
6-T



5-T 6-T
5-U



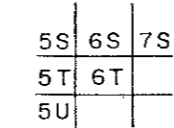
For Tax Purposes Only

Prepared by
VOGT, IVERS AND ASSOCIATES
 ENGINEERS-ARCHITECTS
 CHARLESTON, W.VA.
 CINCINNATI, OHIO

Property line	—————	Original lot line	-----
Edge of pavement or roadway	-----	Deed lot number	(15)
Corporation line	-----	Parcel or index number	(16)
District line	-----	Improvement	(17)
County line	-----	Railroad	(18)

Revisions			
1	PW	9	OGIS 4/26/95 SAJ
2	Rev. to 7-80	10	5.1.97 J.E.B
3	" " 7-1-83	11	
4	7/1/84	12	RLB
5	Revised to 7-1-87	13	
6	REV. TO 1-1-88	14	NCS
7	OGIS 2/9/91	15	DSH
8	O.G.I.S 1-1-95	16	J.E.B

KEY MAP



BRAXTON COUNTY

STATE OF WEST VIRGINIA

Office of Assessor

DISTRICT

BIRCH DISTRICT

SHEET NO: 6-T

Date, Aerial Photography: 4-22-60 Date, Map: 10-2-62
 Photo No: BR-14-165 Scale: 1" = 400'