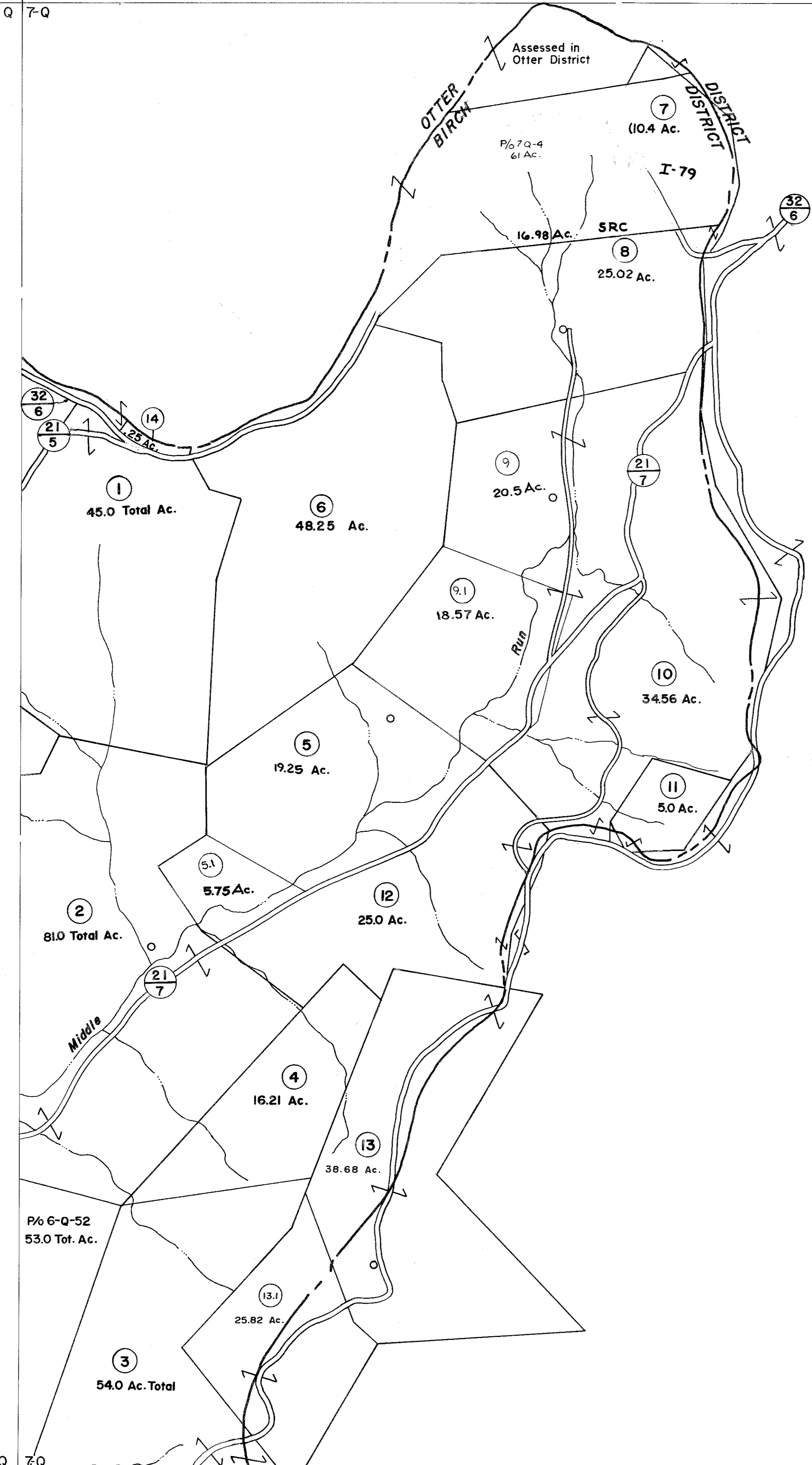


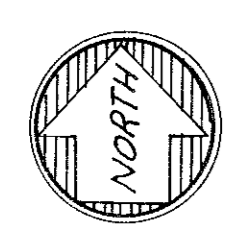
6-Q 7-Q

7-Q



6-Q 7-Q
6-R 7-R

7-Q
7-R



For Tax Purposes Only

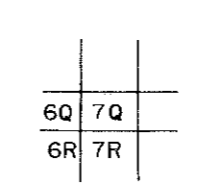
Prepared by
VOGT, IVERS AND ASSOCIATES
 ENGINEERS-ARCHITECTS
 CHARLESTON, W.VA.
 CINCINNATI, OHIO

Property line ———
 Edge of pavement or roadway - - - -
 Corporation line - - - - -
 District line ———
 County line ———

Original lot line - - - - -
 Dead lot number (15)
 Parcel or index number (99)
 Improvement (o)
 Railroad ———

Revisions	
1	PW
2	Rel. to 7-80
3	" " 7-1-83
4	7/1/84 RLB
5	O.G.I.S 1-1-95 J.E.B.
6	
7	
8	
9	
10	
11	
12	
13	
14	
15	
16	
17	
18	
19	
20	
21	
22	
23	
24	

KEY MAP



BRAXTON COUNTY
 STATE OF WEST VIRGINIA
 Office of Assessor

DISTRICT
BIRCH DISTRICT

SHEET NO: 7-Q

Date, Aerial Photography: 4-22-60 Date, Map: 9-23-62
 Photo No: BR-14-161 Scale: 1" = 400'