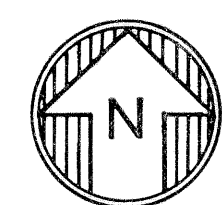
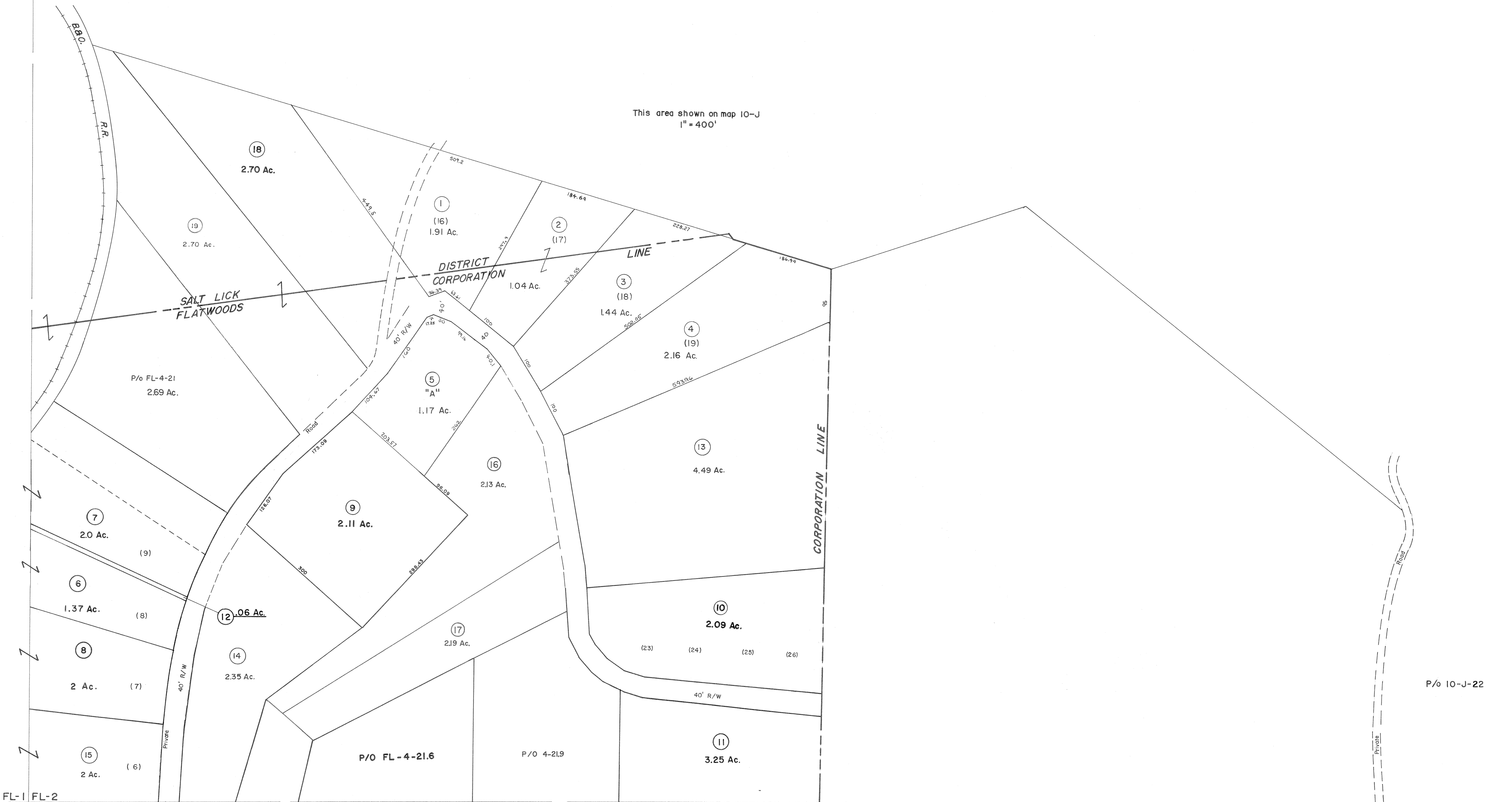


This area shown on map 10-J
1" = 400'



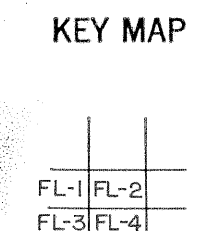
For Tax Purposes Only

Prepared by
VOGT, IVERS AND ASSOCIATES
ENGINEERS-ARCHITECTS
CHARLESTON, W.VA.
CINCINNATI, OHIO

Property line —————
 Edge of pavement or roadway - - - - -
 Corporation line - - - - -
 District line - - - - -
 County line - - - - -

Original lot line - - - - -
 Deed lot number (15)
 Parcel or index number (16)
 Improvement (17)
 Railroad (18)

Revisions			
1	3-4-76	T.E.	9 EXCALIBUR GRAPHICS 5/93
2	Revised to 7-1-80	REB	10 OGIS 5/11/95 SAJ
3	" " 7-1-83	REB	11 O.G.I.S 6-1-96 J.E.B
4	7/1/84	RLB	12 ESI 6/06/02 REK
5	Revised to 7-1-86	REB	13 5/8/04 S&H
6	July, 1987	TR	14
7	Rev. to 1-1-88	REB	15
8	OGIS 1/27/91	DSH	16



BRAXTON COUNTY

STATE OF WEST VIRGINIA

Office of Assessor

DISTRICT
TOWN OF FLATWOODS

SHEET NO: FL-2

Date, Aerial Photography: 4-20-60
Photo No: BR-14-98

Date, Map: 4-1-63
Scale: 1" = 100'