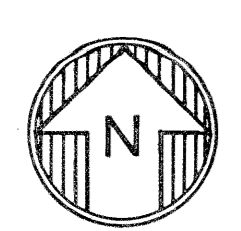
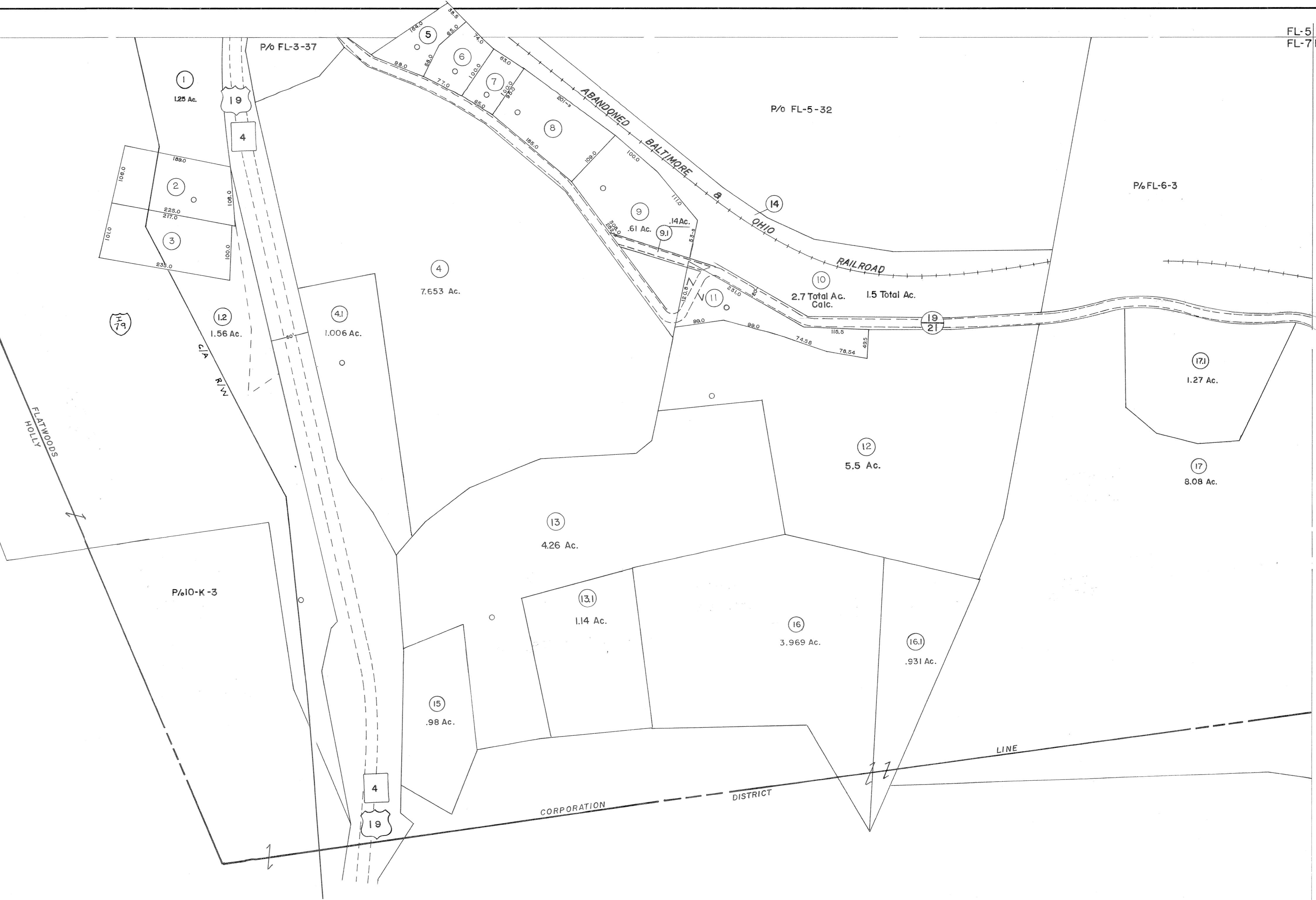


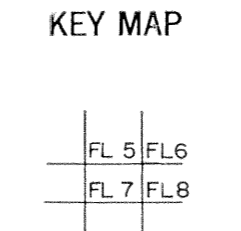
This map shown on map 10-K
1"=400'



For Tax Purposes Only
Prepared by
VOGT, IVERS AND ASSOCIATES
ENGINEERS-ARCHITECTS
CHARLESTON, W.VA.
CINCINNATI, OHIO

Property line	—————	Original lot line	- - - - -
Edge of pavement or roadway	—————	Deed lot number	(15)
Corporation line	—————	Parcel or index number	(19)
District line	—————	Improvement	o
County line	—————	Railroad	—————

Revisions			
1	3-5-76	T.L.	9
2	Revised to 7-80	J.E.	10
3	7-83	J.E.	11
4	7/1/84	RLB	12
5	REV. TO 1-1-88	R.E.B.	13
6	OGIS	SAJ	14
7	4-15-98	J.E.B.	15
8			16
			17
			18
			19
			20
			21
			22
			23
			24



BRAXTON COUNTY
STATE OF WEST VIRGINIA
Office of Assessor

DISTRICT
TOWN OF FLATWOODS

SHEET NO: FL-7

Date, Aerial Photography: 4-20-60
Photo No: BR-14-98
Date, Map: 1-8-63
Scale: 1"=100'