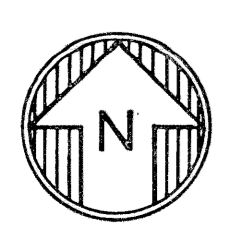
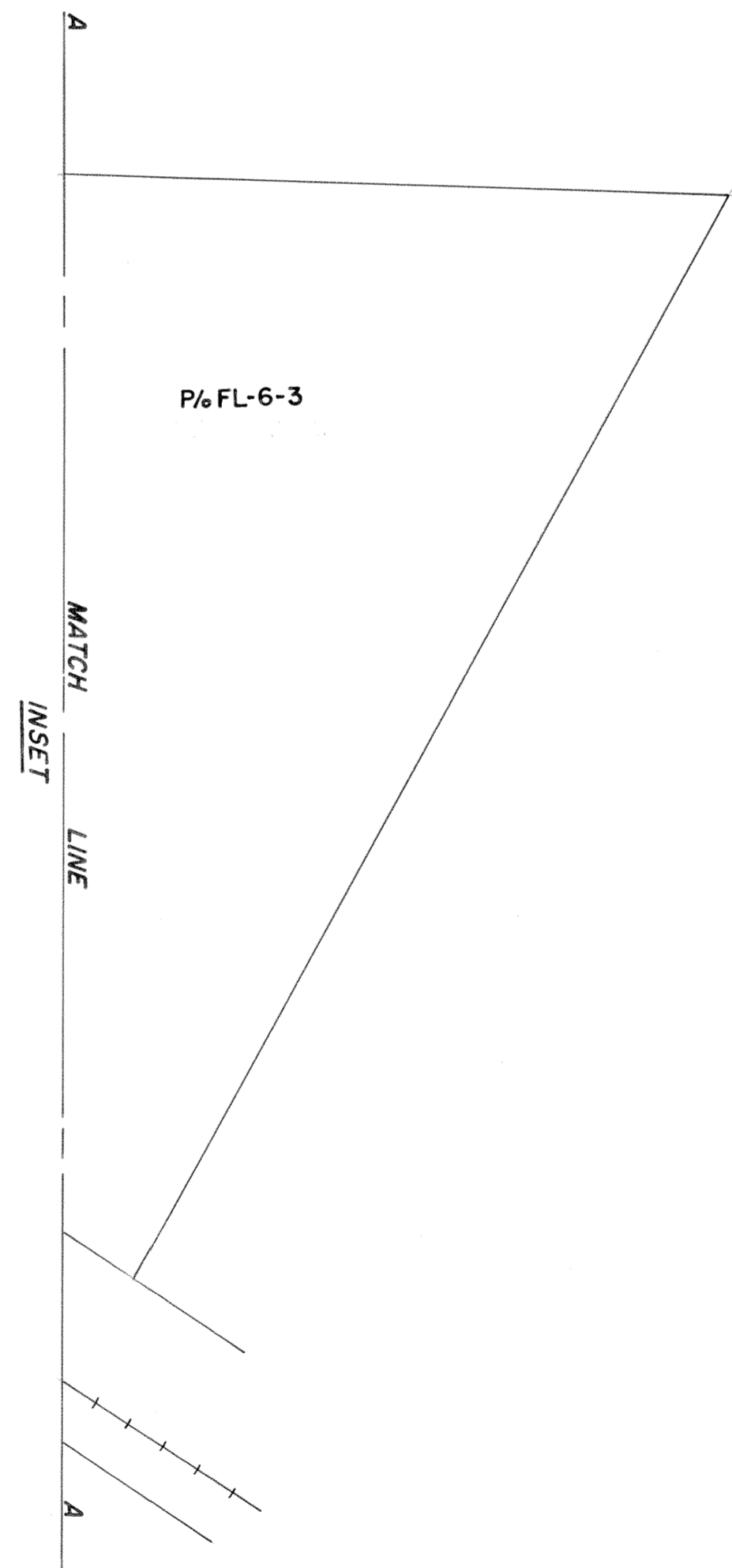
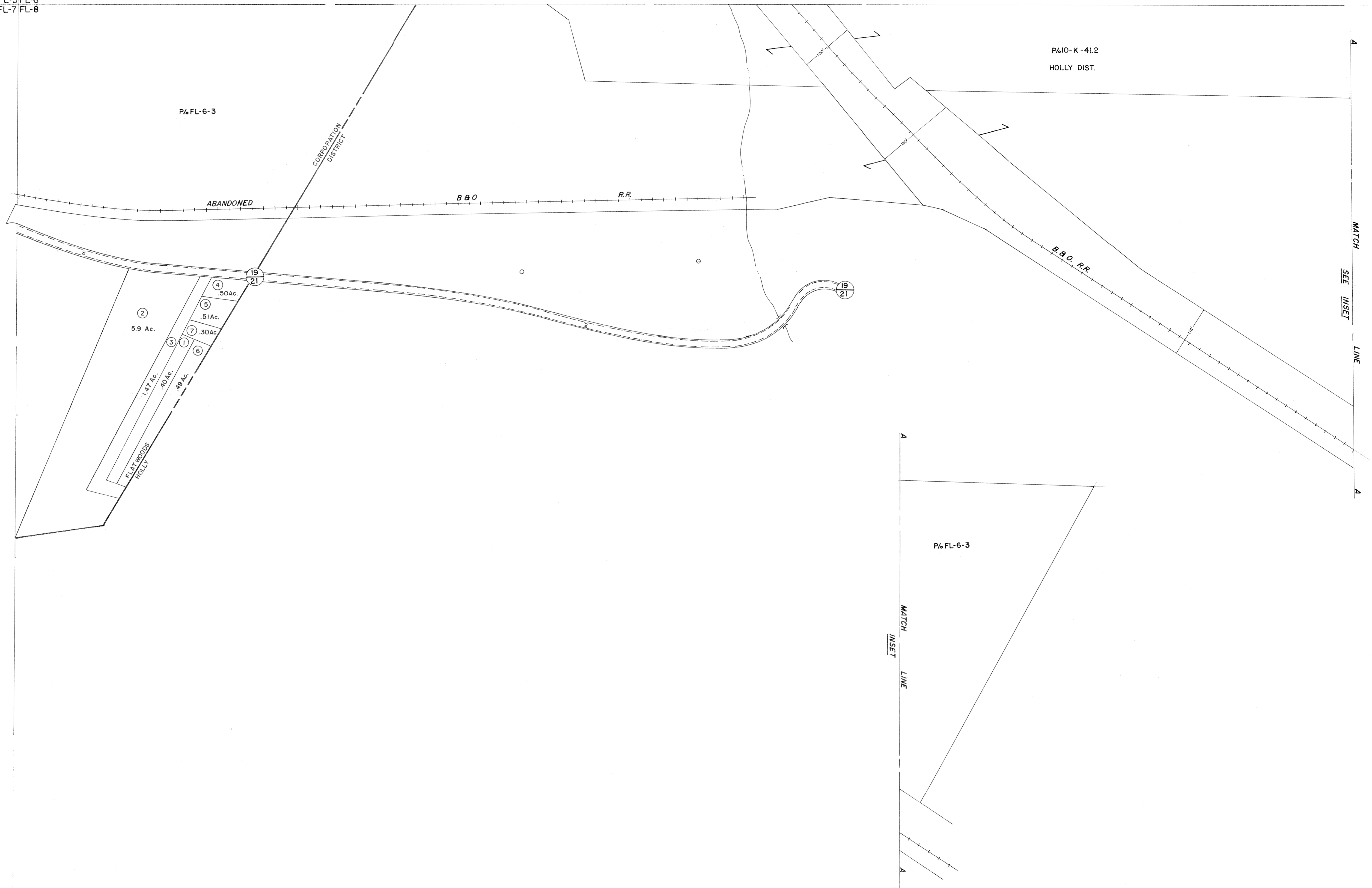


FL-5/FL-6  
FL-7/FL-8



For Tax Purposes Only

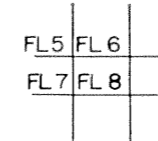
Prepared by  
**VOGT, IVERS AND ASSOCIATES**  
ENGINEERS-ARCHITECTS  
CHARLESTON, W.VA.  
CINCINNATI, OHIO

Property line ————  
Edge of pavement or roadway - - - -  
Corporation line - - - - -  
District line - - - - -  
County line - - - - -

Original lot line - - - - -  
Deed lot number (15) ————  
Parcel or index number (29) ————  
Improvement ————  
Railroad ————

Revisions			
1	3-5-76 T.B.	9	17
2	Revised to 7-1-80 J.B.	10	18
3	" " " 7-1-83 J.B.	11	19
4	7/1/84 RLB	12	20
5	REV. TO 1-1-88 R.E.B.	13	21
6	5/12/05 S&H	14	22
7	4/9/06 S&H	15	23
8		16	24

KEY MAP



**BRAXTON COUNTY**

STATE OF WEST VIRGINIA

Office of Assessor

DISTRICT  
**TOWN OF FLATWOODS**

SHEET NO: **FL-8**

Date, Aerial Photography: 4-20-60  
Photo No: BR-14-98

Date, Map: 4-2-63  
Scale: 1" = 100'