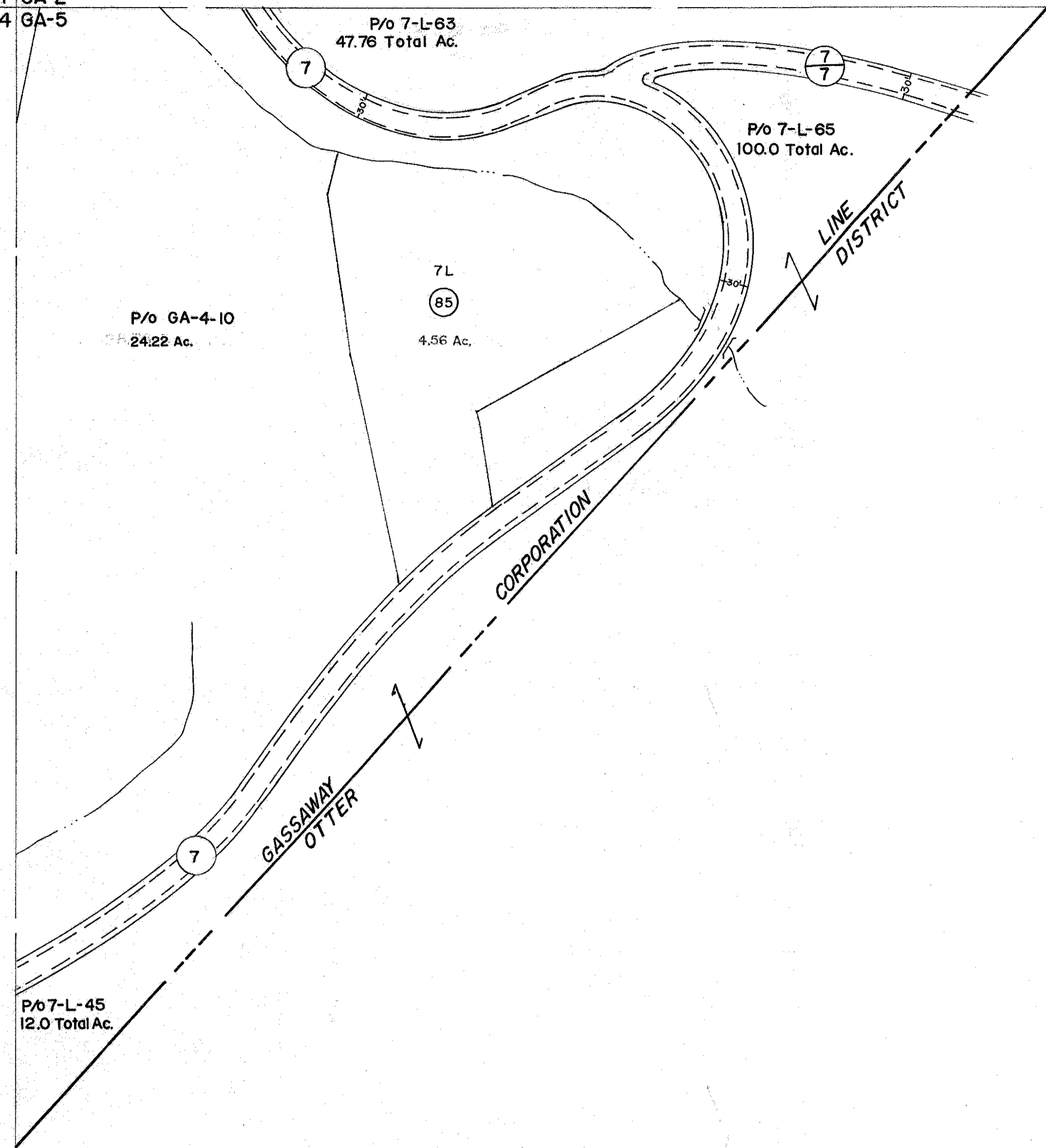
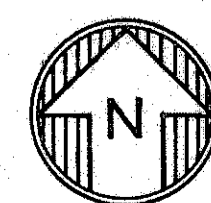


GA-1 GA-2
GA-4 GA-5

GA-2
GA-5



GA-4 GA-5
GA-7



For Tax Purposes Only

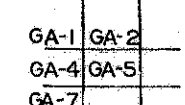
Prepared by
VOGT, IVERS AND ASSOCIATES
 ENGINEERS-ARCHITECTS
 CHARLESTON, W.VA.
 CINCINNATI, OHIO

Property line
 Edge of pavement or roadway
 Corporation line
 District line
 County line

Original lot line
 Deed lot number
 Parcel or index number
 Improvement
 Railroad

Revisions			
1	Revised to 7-1-60		9
2	" " 7-1-63		10
3	7/1/84	RLB	11
4	4-15-98	J.E.B.	12
5	2/20/15	S&H	13
6			14
7			15
8			16
			17
			18
			19
			20
			21
			22
			23
			24

KEY MAP



BRAXTON COUNTY

STATE OF WEST VIRGINIA

Office of Assessor

DISTRICT

TOWN OF GASSAWAY

SHEET NO: GA-5

Date, Aerial Photography: 4-22-60
 Photo No: BR-14-157

Date, Map: 3-20-63
 Scale: 1"=100'