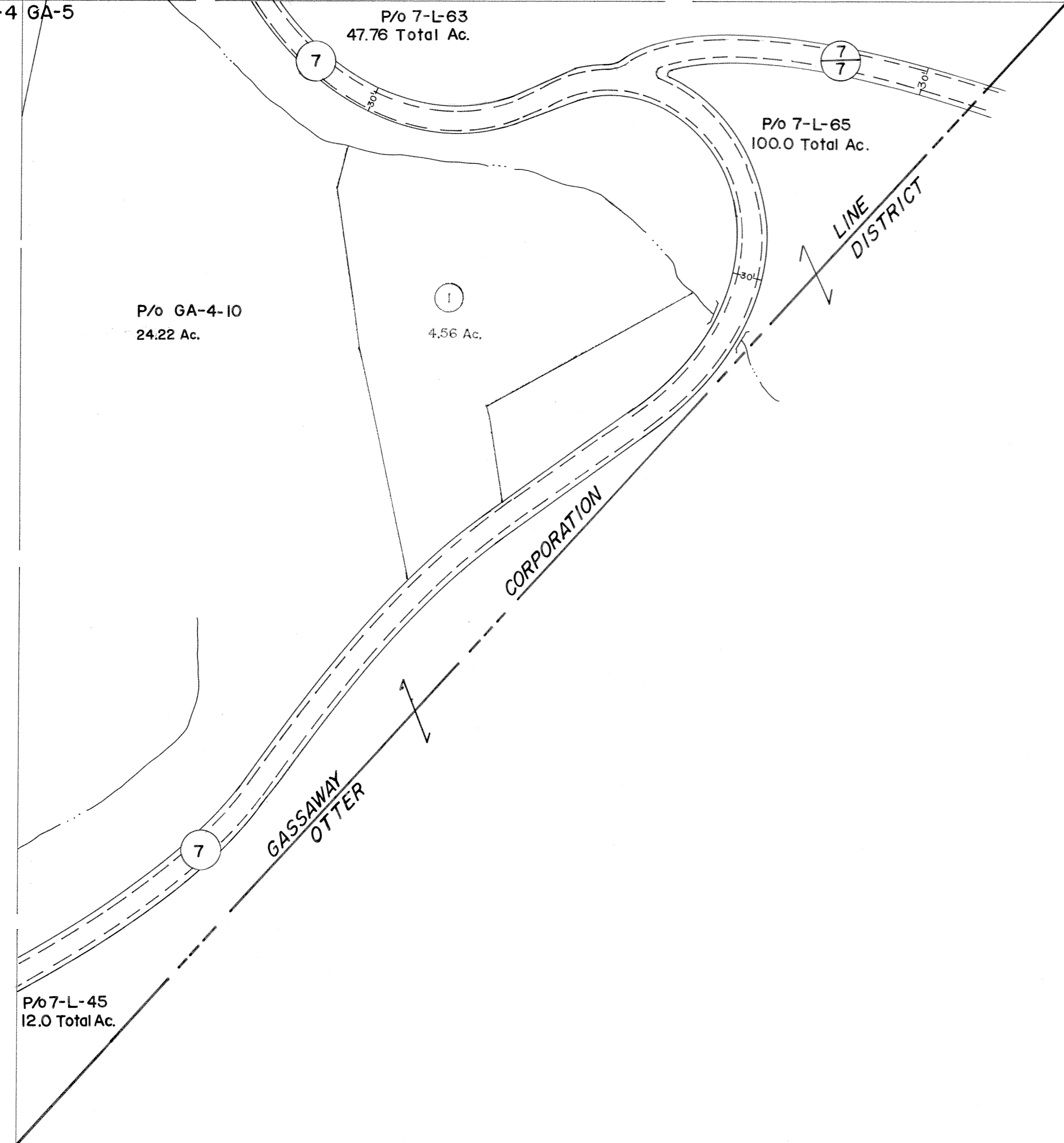
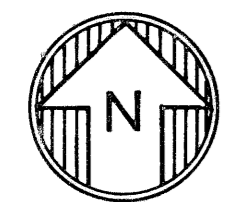


GA-1 GA-2  
GA-4 GA-5

GA-2  
GA-5



GA-4 GA-5  
GA-7



For Tax Purposes Only

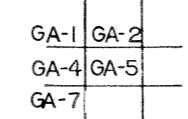
Prepared by  
VOGT, IVERS AND ASSOCIATES  
ENGINEERS-ARCHITECTS  
CHARLESTON, W.VA.  
CINCINNATI, OHIO

Property line —————  
Edge of pavement or roadway - - - - -  
Corporation line —————  
District line - - - - -  
County line - - - - -

Original lot line - - - - -  
Deed lot number (15)  
Parcel or index number (15)  
Improvement (15)  
Railroad (15)

Revisions	
1	Revised to 7-1-80 J.E.B.
2	" " 7-1-83 RLB
3	7/1/84 RLB
4	4-15-98 J.E.B.
5	
6	
7	
8	

KEY MAP



BRAXTON COUNTY

STATE OF WEST VIRGINIA

Office of Assessor

DISTRICT

TOWN OF GASSAWAY

SHEET NO: GA-5

Date, Aerial Photography: 4-22-60  
Photo No: BR-14-157

Date, Map: 3-20-63  
Scale: 1"=100'