

GA-3 GA-4
GA-6 GA-7

P/6 GA-3-1

P/O GA-4-4

28
1.63 Tot.
Ac.

This Area is Shown on Map 7-M
1" = 400'

P/O GA 7-1

26
4.0 Ac.

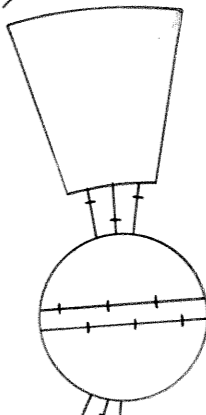
P/6 7-36

ELK RIVER

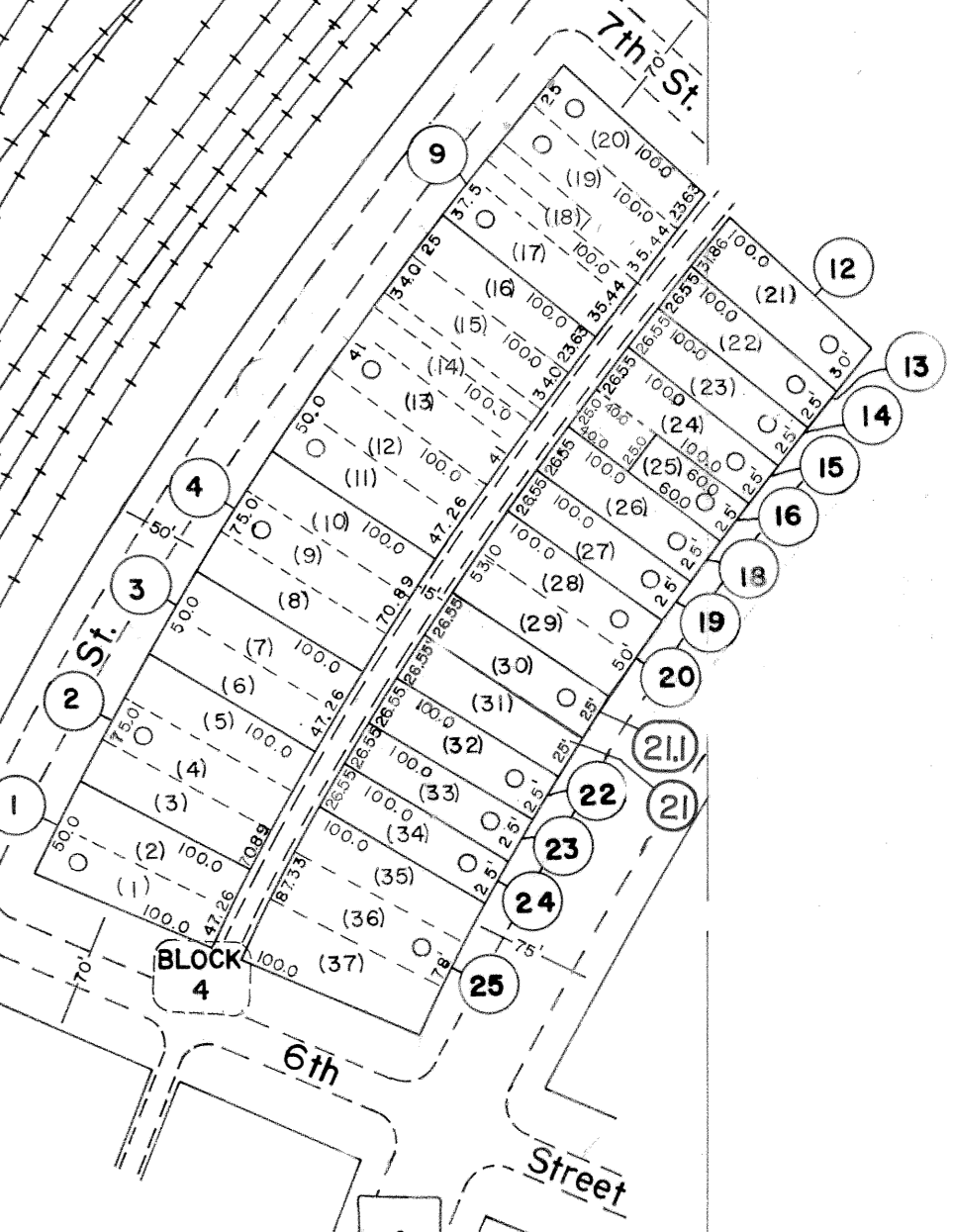
RIVER

OTTER GASSAWAY CORR

DISTRICT LINE

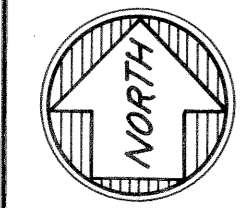


BALTIMORE & OHIO RAILROAD



GA-6 GA-7
GA-8 GA-9

GA-6
GA-8



For Tax Purposes Only

Prepared by
VOGT, IVERS AND ASSOCIATES
ENGINEERS-ARCHITECTS
CHARLESTON, W.VA.
CINCINNATI, OHIO

Property line	—
Edge of pavement or roadway	- - - -
Corporation line	- · - · -
District line	- - - - -
County line	- - - - -

Original lot line	—
Deed lot number	(15)
Parcel or index number	99
Improvement	—
Railroad	—

Revisions	
1	3-10-76 T.L.P.
2	Revised to 7-1-84
3	" " 7-1-83 C.B.G.
4	7/1/84 R.L.B.
5	EXCALIBUR GRAPHICS 5/93
6	O.G.I.S. 1-1-95 J.E.B.
7	5-1-97 J.E.B.
8	5/4/2003 S&H
9	
10	
11	
12	
13	
14	
15	
16	
17	
18	
19	
20	
21	
22	
23	
24	

KEY MAP

GA-3 GA-4
GA-6 GA-7
GA-8 GA-9

BRAXTON COUNTY
STATE OF WEST VIRGINIA
Office of Assessor

DISTRICT
TOWN OF GASSAWAY
SHEET NO: **GA - 6**
Date, Aerial Photography: 4-14-60 Date, Map: 4-2-62
Photo No: BRG-12-24 Scale: 1" = 100'