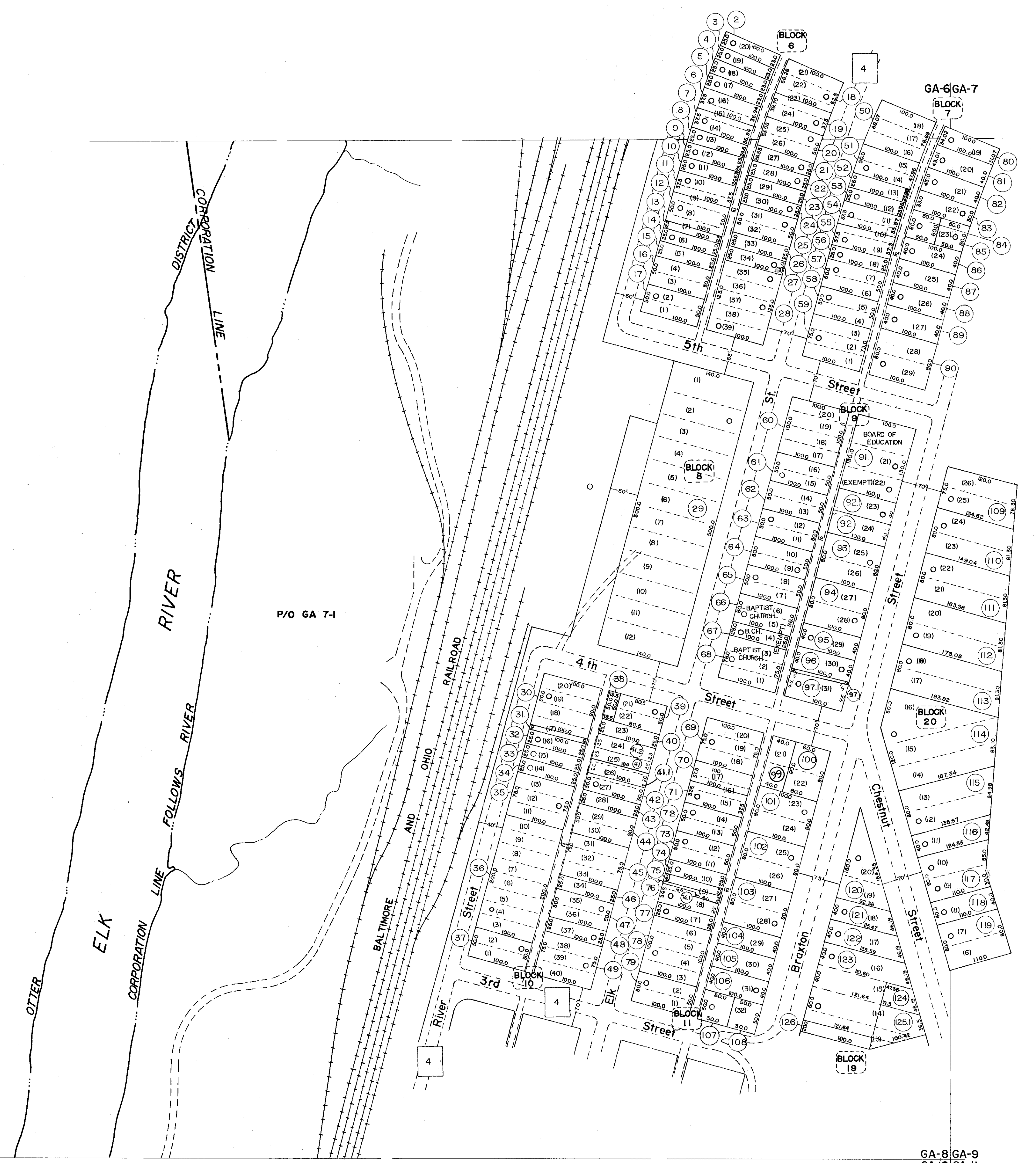


GA-6
GA-8

This area shown on map 7-M
1" = 400'

This area shown on map OD-8
1" = 100'

GA-8
GA-10



GA-8 GA-9
GA-10 GA-11

For Tax Purposes Only

Prepared by
VOGT, IVERS AND ASSOCIATES
ENGINEERS-ARCHITECTS
CHARLESTON, W.VA.
CINCINNATI, OHIO

Property line	—————
Edge of pavement or roadway	- - - - -
Corporation line	—————
District line	—————
County line	—————

Original lot line	—————
Deed lot number	(15)
Parcel or index number	(10)
Improvement	○
Railroad	—————

Revisions			
1	3-10-76	T.E.B.	9
2	Revised Pa 7-1-80		10
3	7-1-83	C.B.S.	11
4	7/1/84	RLB	12
5	Revised to 7-1-85		13
6	July, 1987	TRL	14
7	OGIS 2/4/91	DSH	15
8	O.G.I.S 1-1-95	J.E.B	16
			17
			18
			19
			20
			21
			22
			23
			24

KEY MAP

GA-6 GA-7
GA-8 GA-9
GA-10 GA-11

BRAXTON COUNTY
STATE OF WEST VIRGINIA
Office of Assessor

DISTRICT
TOWN OF GASSAWAY

SHEET NO: **GA-8**

Date, Aerial Photography: 4-22-60
Photo No: BRG-14-24

Date, Map: 9-11-62
Scale: 1" = 100'