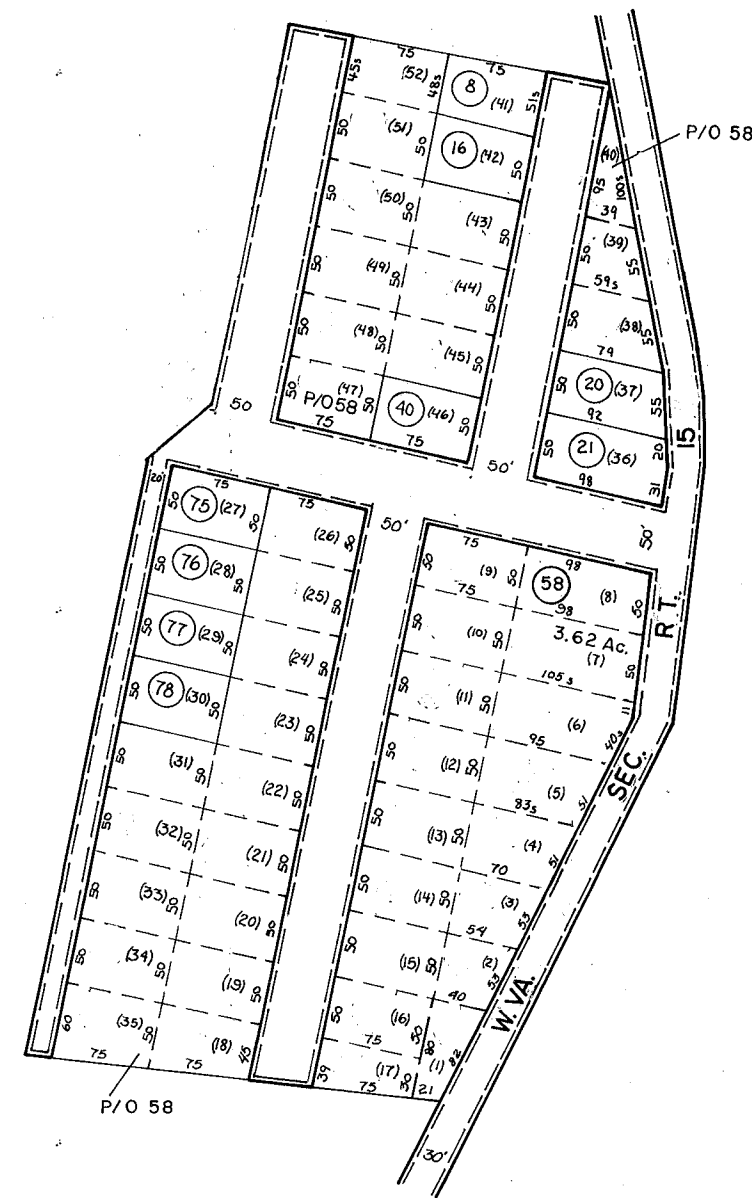


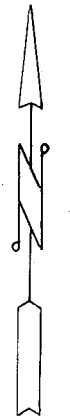
10-L

10-L

10-L



10-L



For Tax Purposes Only

Prepared by
ASSESSMENT EQUALIZATION DIV.
STATE TAX COMMISSIONER
CHARLESTON, W.VA.

LEGEND

Property line	-----	Original lot line	-----
Edge of pavement or roadway	-----	Deed lot number	(15)
Corporation line	-----	Parcel or index number	(99)
District line	-----	Improvement	o
County line	-----	Railroad	+

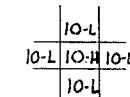
REVISIONS

1	2-6-72	JACK REEVES
2		Revised to 7-80
3		7-1-83
4	7-1-84	L.E.S.
5	3/18/14	S&H
6		
7		
8		

RESTRICTION

All tax maps created under the provisions of reappraisal legislation are the property of the State of West Virginia and the reproduction, copying, distribution or sale of such tax maps or any copies thereof without the written permission of the State Tax Commissioner is prohibited by law.

KEY MAP



BRAXTON COUNTY
STATE OF WEST VIRGINIA
Office of Assessor

HOLLY DISTRICT

SHEET NO: 10-H

Date, Aerial Photography:
Photo No:

Date, Map: 2-6-73
Scale: 1"=100'