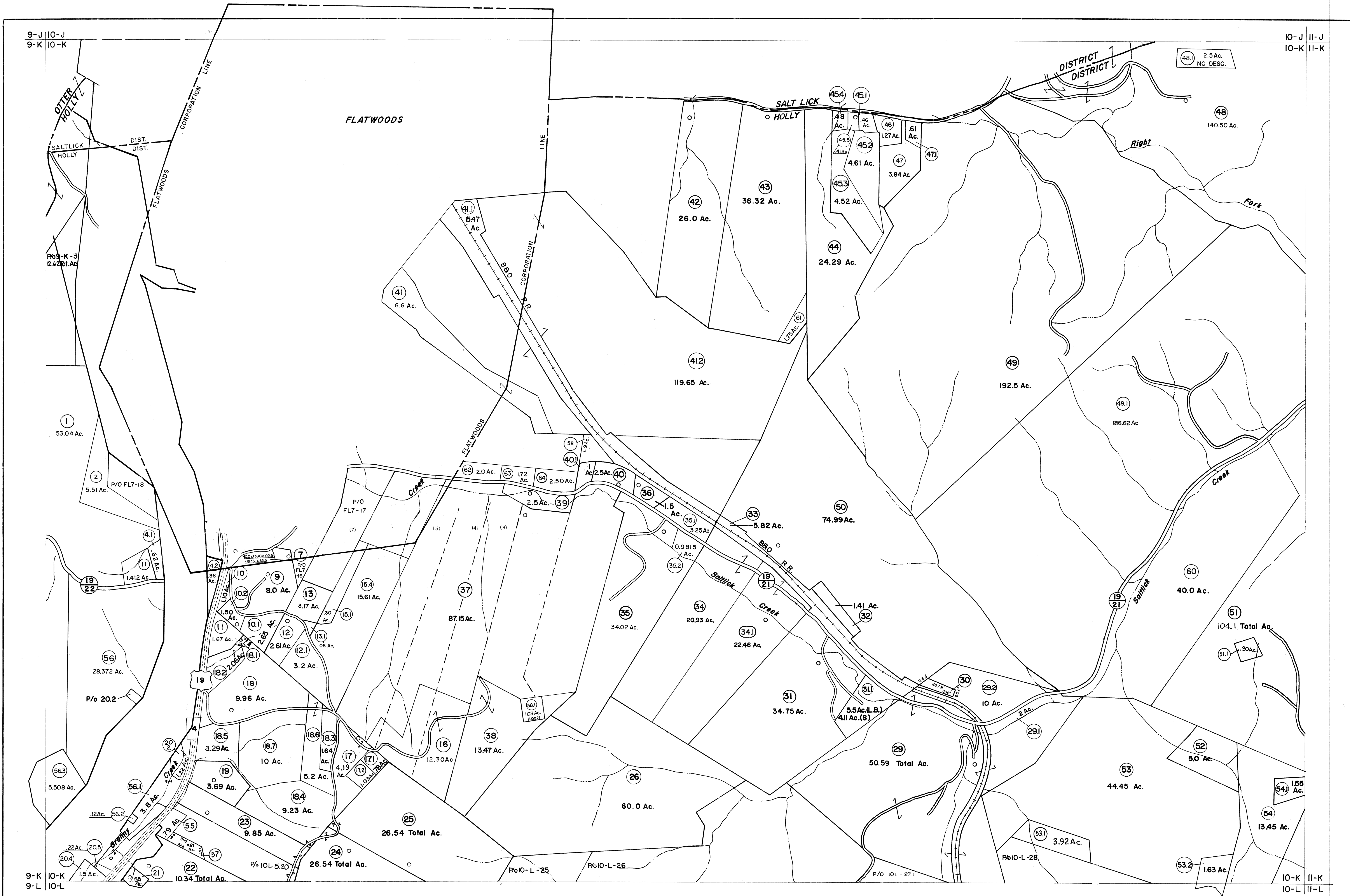


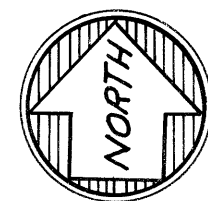
9-J 10-J
9-K 10-K

10-J 11-J
10-K 11-K



9-K 10-K
9-L 10-L

10-K 11-K
10-L 11-L



For Tax Purposes Only

Prepared by
VOGT, IVERS AND ASSOCIATES
 ENGINEERS-ARCHITECTS
 CHARLESTON, W.VA.
 CINCINNATI, OHIO

Property line —————
 Edge of pavement or roadway - - - - -
 Corporation line - - - - -
 District line - - - - -
 County line - - - - -

Original lot line - - - - -
 Deed lot number (15) ————
 Parcel or index number (20) (21) ————
 Improvement (10) ————
 Railroad (R) ————

Revisions			
1	2-8-73	Jack Reeves	9
2	3-4-76	DS	10
3	Revised to 7-80	EXCALIBUR GRAPHICS	11
4	7-1-83	OGIS	12
5	7-1-84	L.E.S.	13
6	Revised to 7-1-84	O.G.I.S.	14
7	Revised to 7-1-84	5-1-97	15
8	July, 1987	4-15-98	16
9	REV. TO 1-1-88	R.E.B.	17
10	OGIS	2/9/91	18
11	OGIS	5/1/95	19
12	O.G.I.S.	6-1-96	20
13	5-1-97	J.E.B.	21
14	4-15-98	J.E.B.	22
15	5-1-99	J.E.B.	23
16			24

4/11/13
 3/16/14
 KEY MAP
 2/22/15
 2/8/17
 S.B.H.
 S.B.H.
 S.B.H.
 S.L.S.

BRAXTON COUNTY
 STATE OF WEST VIRGINIA
 Office of Assessor

DISTRICT
HOLLY DISTRICT

SHEET NO: 10-K

Date, Aerial Photography: 4-20-60
 Photo No: BR-14-98
 Date, Map: 9-21-62
 Scale: 1" = 400'