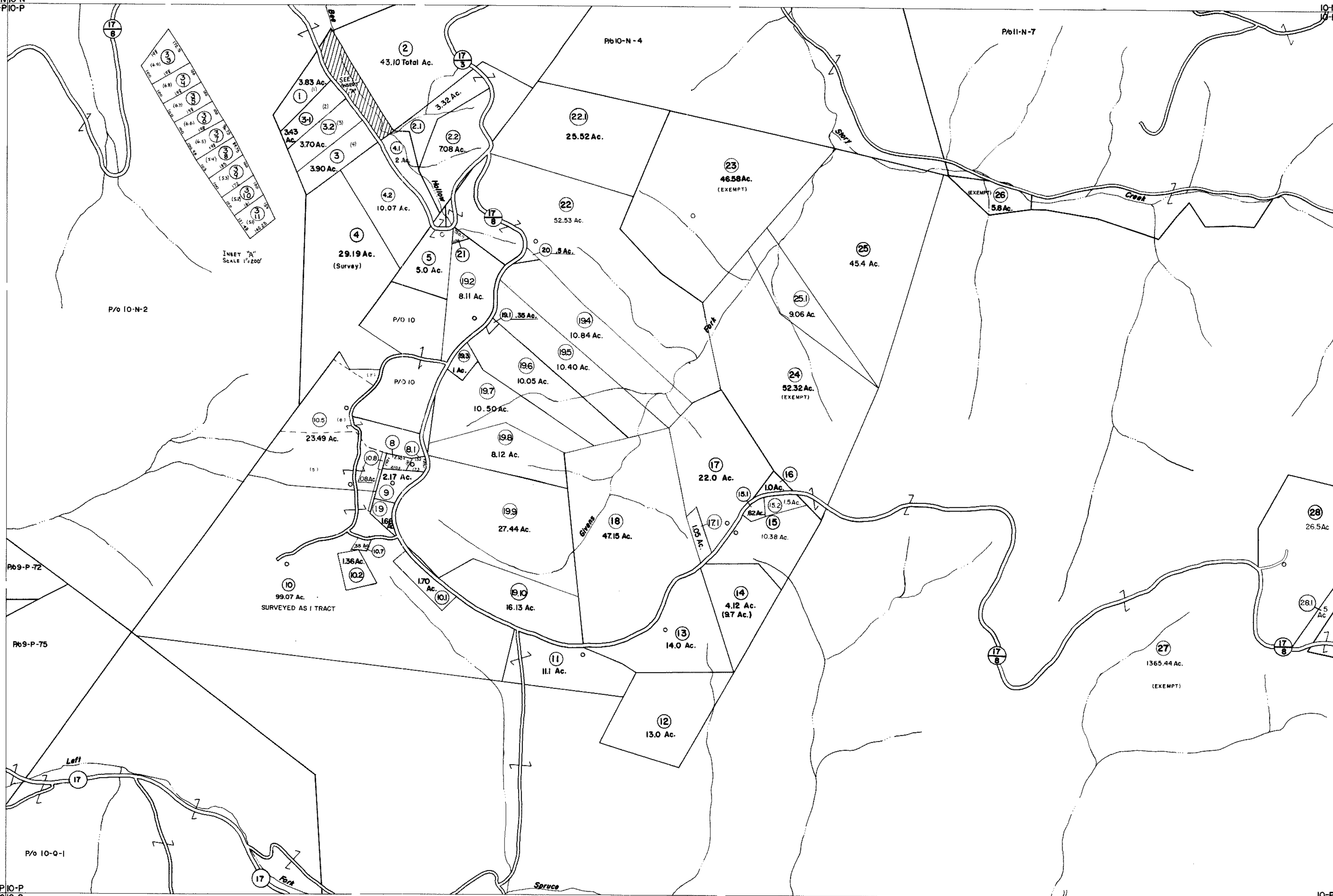


9-N-10-N
9-P-10-P

10-N-11-N
10-P-11-P



9-P-10-P
9-Q-10-Q

10-P-11-P
10-Q-11-Q

For Tax Purposes Only



Prepared by
VOGT, IVERS AND ASSOCIATES
ENGINEERS-ARCHITECTS
CHARLESTON, W.VA.
CINCINNATI, OHIO

Property line —————
 Edge of pavement or roadway ————
 Corporation line - - - - -
 District line ————
 County line - - - - -

Original lot line - - - - -
 Deed lot number (15)
 Parcel or index number (99)
 Improvement ————
 Railroad ————

Revisions			
1	2-8-73	Jack Reeves	9
2	Revised to 1-80		10
3	" 7-1-83 C.B.G.		11
4	7-1-84	LES	12
5	July 1987	TRL	13
6	OGIS 2/9/91	DSH	14
7	5-1-97	J.E.B	15
8	4-15-98	J.E.B	16
9	5-1-99	J.E.B	17
10	ESI 4-27-00	REK	18
11	ESI 5/31/01	REK	19
12	4/30/03	SBH	20
13	4/24/04	SBH	21
14	4/30/05	SBH	22
15	4/19/08	SBH	23
16	3-19-10		24

KEY MAP

9-N-10-N
9-P-10-P
9-Q-10-Q

BRAXTON COUNTY

STATE OF WEST VIRGINIA

Office of Assessor

DISTRICT

HOLLY DISTRICT

SHEET NO: 10-P

Date, Aerial Photography: 4-22-60
Photo No. BR-14-93

Date, Map: 9-14-62
Scale: 1" = 400'