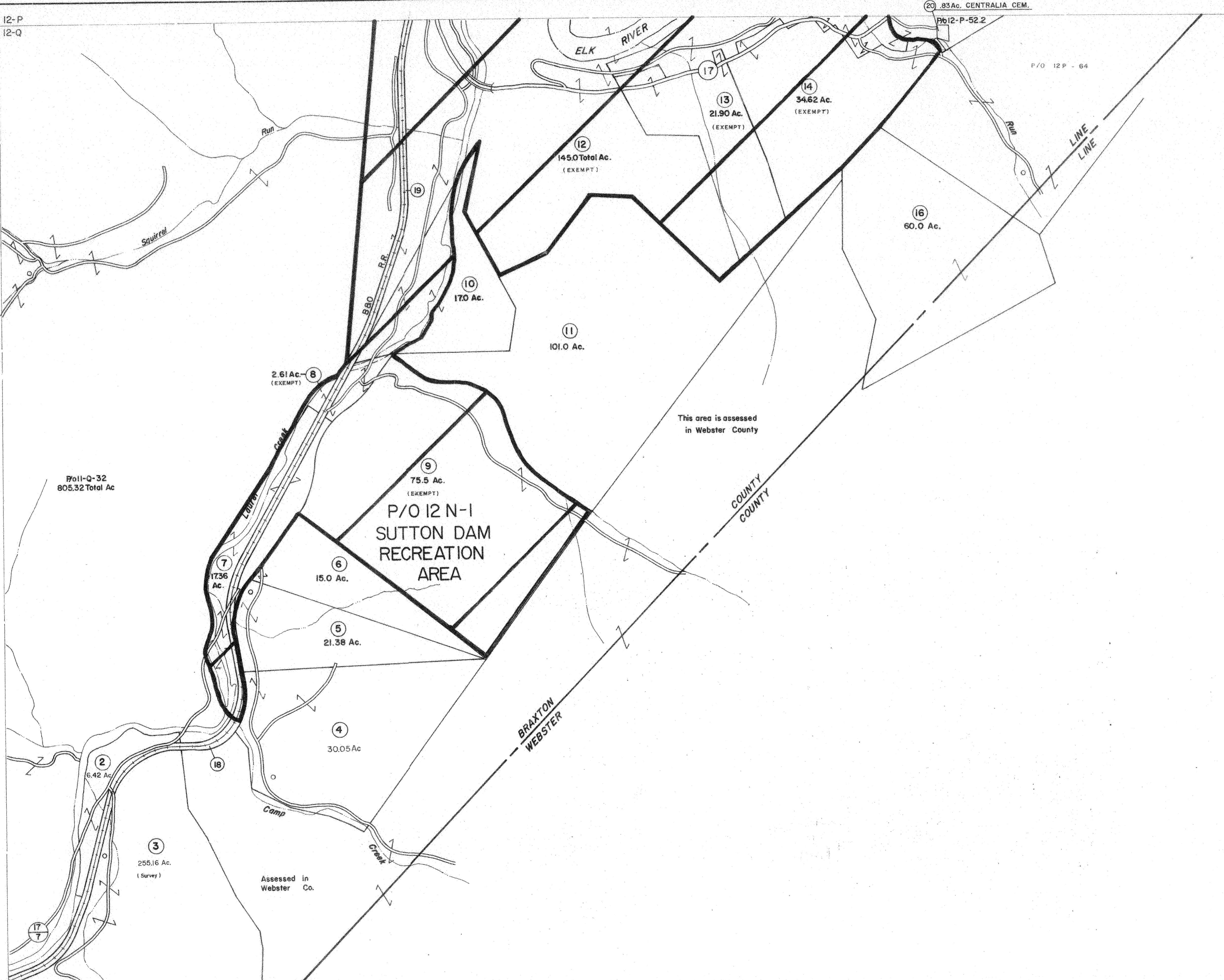


11-P 12-P
11-Q 12-Q

20 .83Ac. CENTRALIA CEM.
Pb12-P-52.2

P/O 12 P - 64

11-Q 11-R
12-R



Pb11-Q-32
805.32 Total Ac

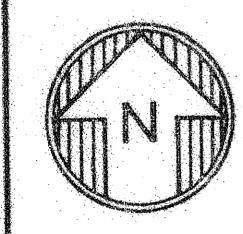
P/O 12 N-1
SUTTON DAM
RECREATION
AREA

This area is assessed
in Webster County

BRAXTON
WEBSTER

COUNTY
COUNTY

Assessed in
Webster
Co.



For Tax Purposes Only
Prepared by
VOGT, IVERS AND ASSOCIATES
ENGINEERS-ARCHITECTS
CHARLESTON, W.VA.
CINCINNATI, OHIO

Property line
Edge of pavement or roadway
Corporation line
District line
County line

Original lot line
Parcel or index number
Improvement
Railroad

Revisions	
1 3-8-76 DS	9 3-19-10 H.A.S
2 Revised to 7.00 DS	10 2/9/17 SLS
3 Revised to 7-1-83 SLS	11
4 7-1-84 L.E.S.	12
5 July, 1987 TRL	13
6 EXCALIBUR GRAPHICS 5/93	14
7 5-1-97 J.E.B	15
8 4-15-98 J.E.B	16

KEY MAP
11P 12P 13P
11Q 12Q 13Q
11R 12R

BRAXTON COUNTY
STATE OF WEST VIRGINIA
Office of Assessor

DISTRICT
HOLLY DISTRICT

SHEET NO: 12-Q

Date, Aerial Photography: 4-20-60 Date, Map: 9-24-62
Photo No: BR-14-52 Scale: 1" = 400'