

12-J|13-J  
12-K|13-K

13-J|14-J  
13-K|14-K

This area assessed in  
Salt Lick District

P612-K-37

P612-K-40

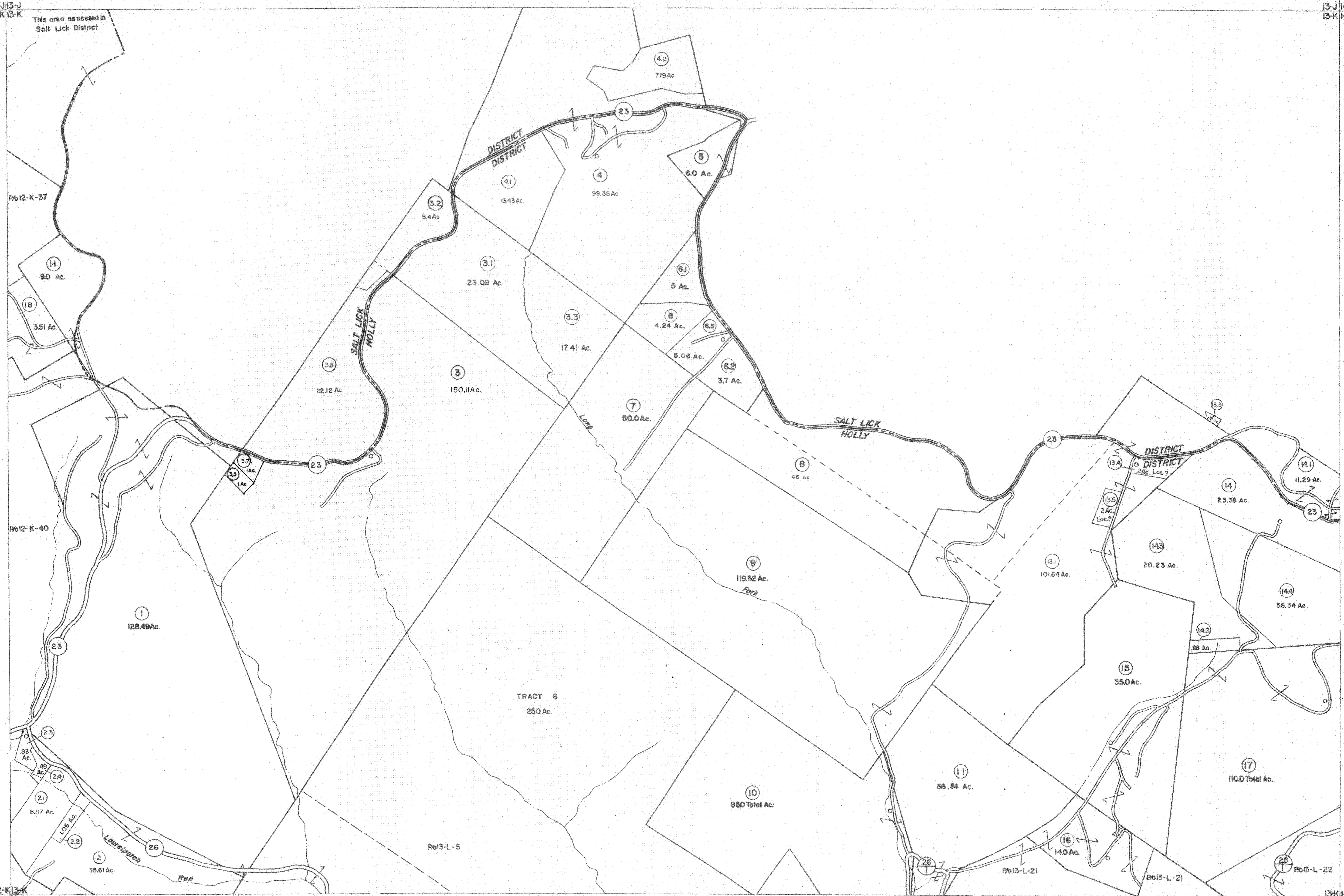
P613-L-5

P613-L-21

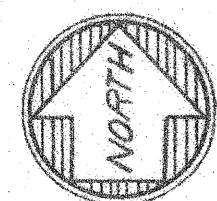
P613-L-21

P613-L-22

13-K|14-K  
13-L|14-L



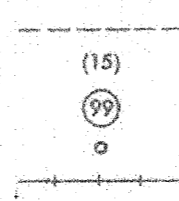
For Tax Purposes Only



Prepared by  
**VOGT, IVERS AND ASSOCIATES**  
ENGINEERS-ARCHITECTS  
CHARLESTON, W.VA.  
CINCINNATI, OHIO

Property line ————  
 Edge of pavement or roadway ————  
 Corporation line - - - - -  
 District line - - - - -  
 County line - - - - -

Original lot line ————  
 Deed lot number (15)  
 Parcel or index number (19)  
 Improvement ————  
 Railroad ————



Revisions					
1	3-8-76	DS	9	5-1-97	J.E.B
2	Revised to 7-80		10	5-1-99	J.E.B
3	" 7-1-83		11	5/31/01	REK
4	7-1-84	L.E.S.	12	4/30/03	S.B.H
5	July, 1987	TRL	13	4/9/06	S.B.H
6	REV. TO 11-88	R.E.B.	14	4/14/07	S.B.H
7	OGIS 2/10/91	DSH	15	4/19/08	S.B.H

KEY MAP

12-J|13-J  
12-K|13-K  
12-L|13-L

**BRAXTON COUNTY**

STATE OF WEST VIRGINIA

Office of Assessor

DISTRICT

**HOLLY DISTRICT**

SHEET NO: **13-K**

Date: Aerial Photographs 4-22-80 Date: Map 8-17-82