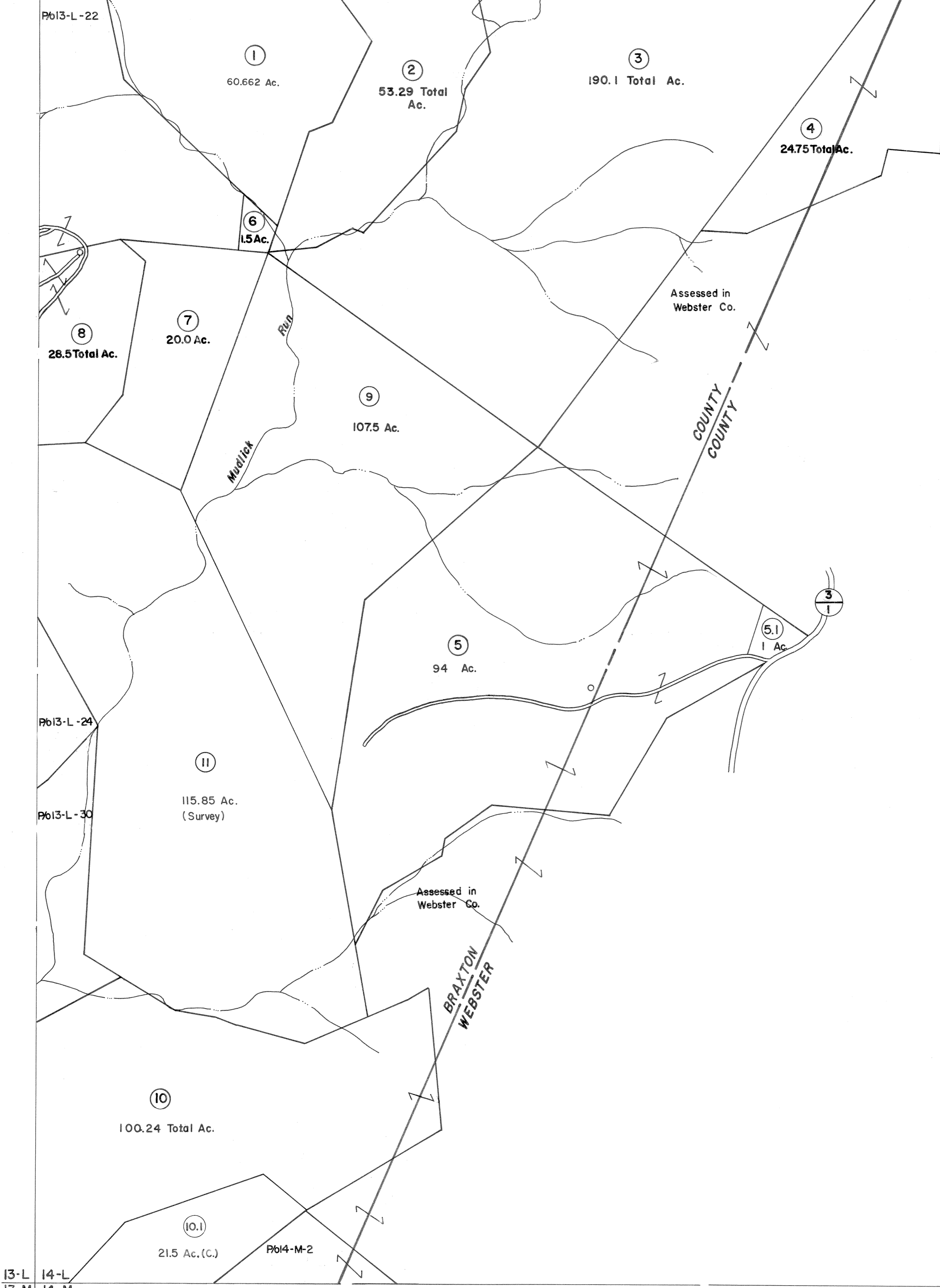
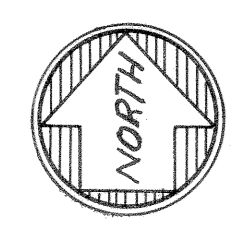


13-K 14-K
13-L 14-L



13-L 14-L
13-M 14-M

14-L
14-M



For Tax Purposes Only
 Prepared by
VOGT, IVERS AND ASSOCIATES
 ENGINEERS-ARCHITECTS
 CHARLESTON, W.VA.
 CINCINNATI, OHIO

Property line ———
 Edge of pavement or roadway - - - -
 Corporation line - - - - -
 District line - - - - -
 County line - - - - -

Original lot line - - - - -
 Deed lot number (15)
 Parcel or index number (19)
 Improvement (10)
 Railroad (o)

Revisions	
1	3-9-76 DS
2	Revised to 7-80 DS
3	" " 7-1-83 CBS
4	7-1-84 L.E.S.
5	July, 1987 TRL
6	EXCALIBUR GRAPHICS 5/93
7	4/19/04 S & H
8	

KEY MAP
 13K 14K
 13L 14L
 13M 14M

BRAXTON COUNTY
 STATE OF WEST VIRGINIA
 Office of Assessor

DISTRICT
HOLLY DISTRICT
 SHEET NO: 14-L
 Date, Aerial Photography: 4-22-60 Date, Map: 9-20-62
 Photo No: BR-14-19 Scale: 1" = 400'