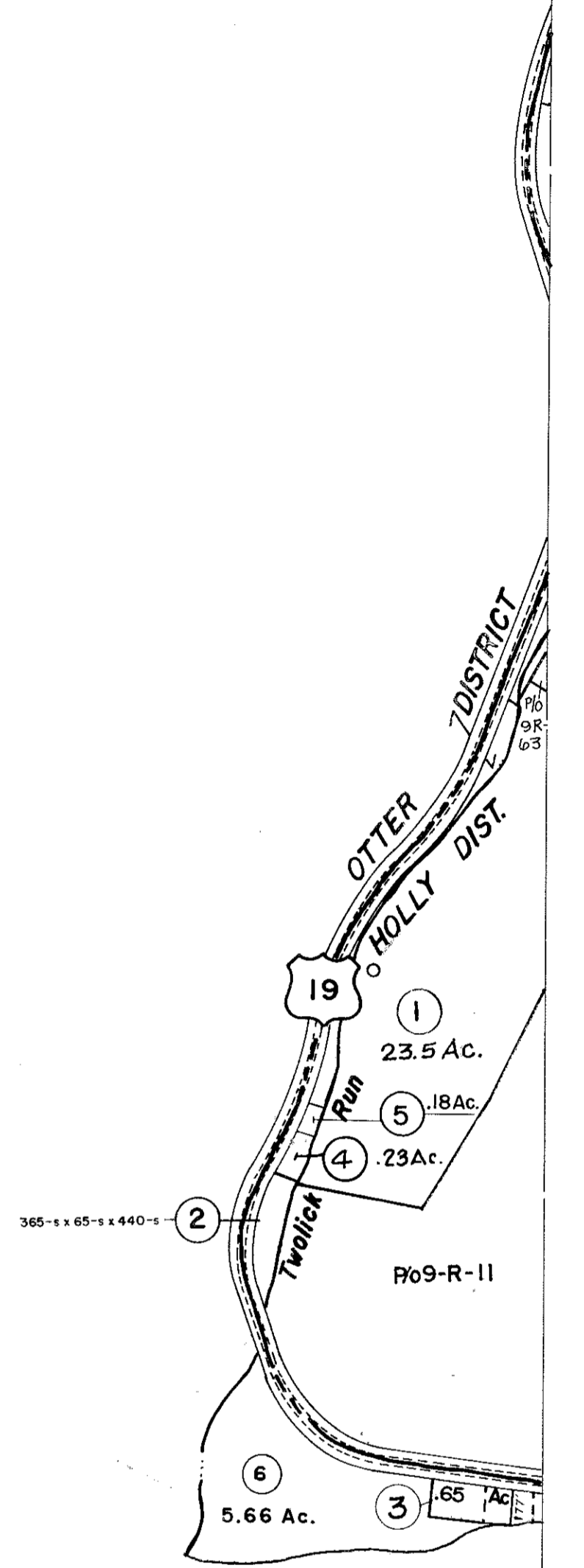


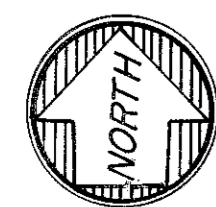
8-R

9-Q
8-R 9-R



8-R

8-R 9-R
9-S



For Tax Purposes Only

Prepared by
VOGT, IVERS AND ASSOCIATES
 ENGINEERS-ARCHITECTS
 CHARLESTON, W.VA.
 CINCINNATI, OHIO

Property line ————
 Edge of pavement or roadway - - - -
 Corporation line - - - - -
 District line - - - - -
 County line - - - - -

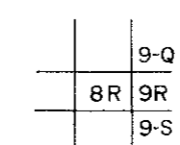
Original lot line - - - - -
 Deed lot number (15) ○
 Parcel or index number (15) ○
 Improvement ○
 Railroad ○

1	3-3-76	DS	9
2	Revised 7-80	DS	10
3	" 7-1-83	DS	11
4	7-1-84	L.E.S.	12
5	July, 1987	TRL	13
6	REV. TO 1-1-88	R.E.B.	14
7	5-1-99	J.E.B.	15
8			16

Revisions

17	
18	
19	
20	
21	
22	
23	
24	

KEY MAP



BRAXTON COUNTY

STATE OF WEST VIRGINIA

Office of Assessor

DISTRICT

HOLLY DISTRICT

SHEET NO: 8-R

Date, Aerial Photography: 4-22-60 Date, Map: 9-15-62
 Photo No: BR-14-132 Scale: 1" = 400'