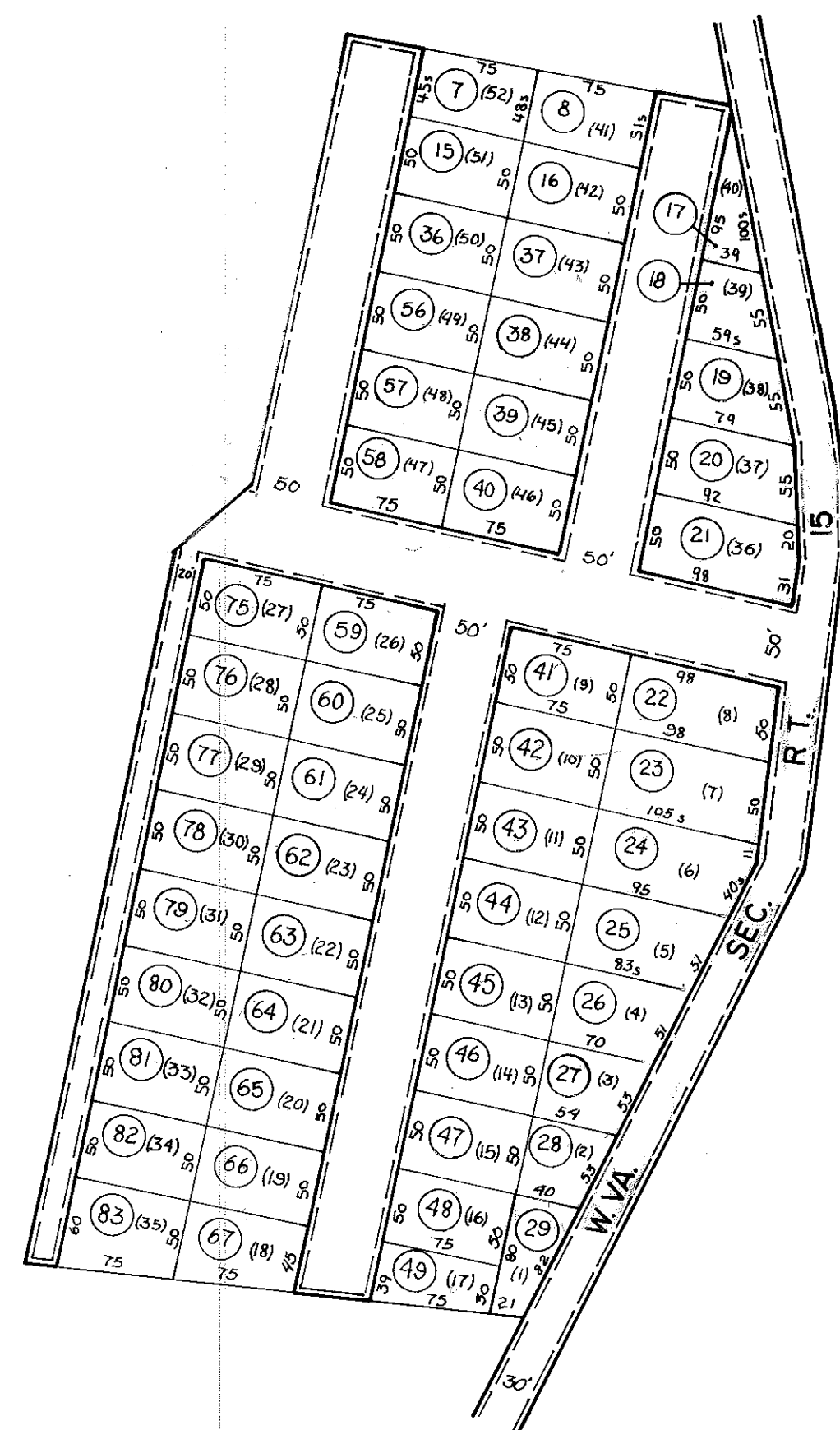


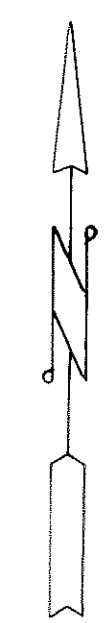
10 - L

10-L

10-L



10-L



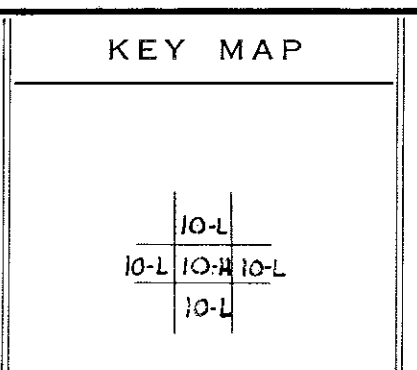
For Tax Purposes Only
 Prepared by
 ASSESSMENT EQUALIZATION DIV.
 STATE TAX COMMISSIONER
 CHARLESTON, W.VA.

LEGEND	
Property line	— — — — —
Edge of pavement or roadway	— — — — —
Corporation line	— — — — —
District line	— — — — —
County line	— — — — —
Original lot line	— — — — — (15)
Deed lot number	⊙
Parcel or index number	⊙
Improvement	o
Railroad	— + — + —

REVISIONS	
1	2-6-72 Jack Reeves
2	Revised to P.B.O. Dr.
3	" 7-1-83
4	7-1-84 L.E.S.
5	
6	
7	
8	

RESTRICTION

All tax maps created under the provisions of reappraisal legislation are the property of the State of West Virginia and the reproduction, copying, distribution or sale of such tax maps or any copies thereof without the written permission of the State Tax Commissioner is prohibited by law.



BRAXTON COUNTY
STATE OF WEST VIRGINIA
 Office of Assessor

HOLLY DISTRICT
SHEET NO: 10-H
 Date, Aerial Photography: Photo No:
 Date, Map: 2-6-73
 Scale: 1"=100'