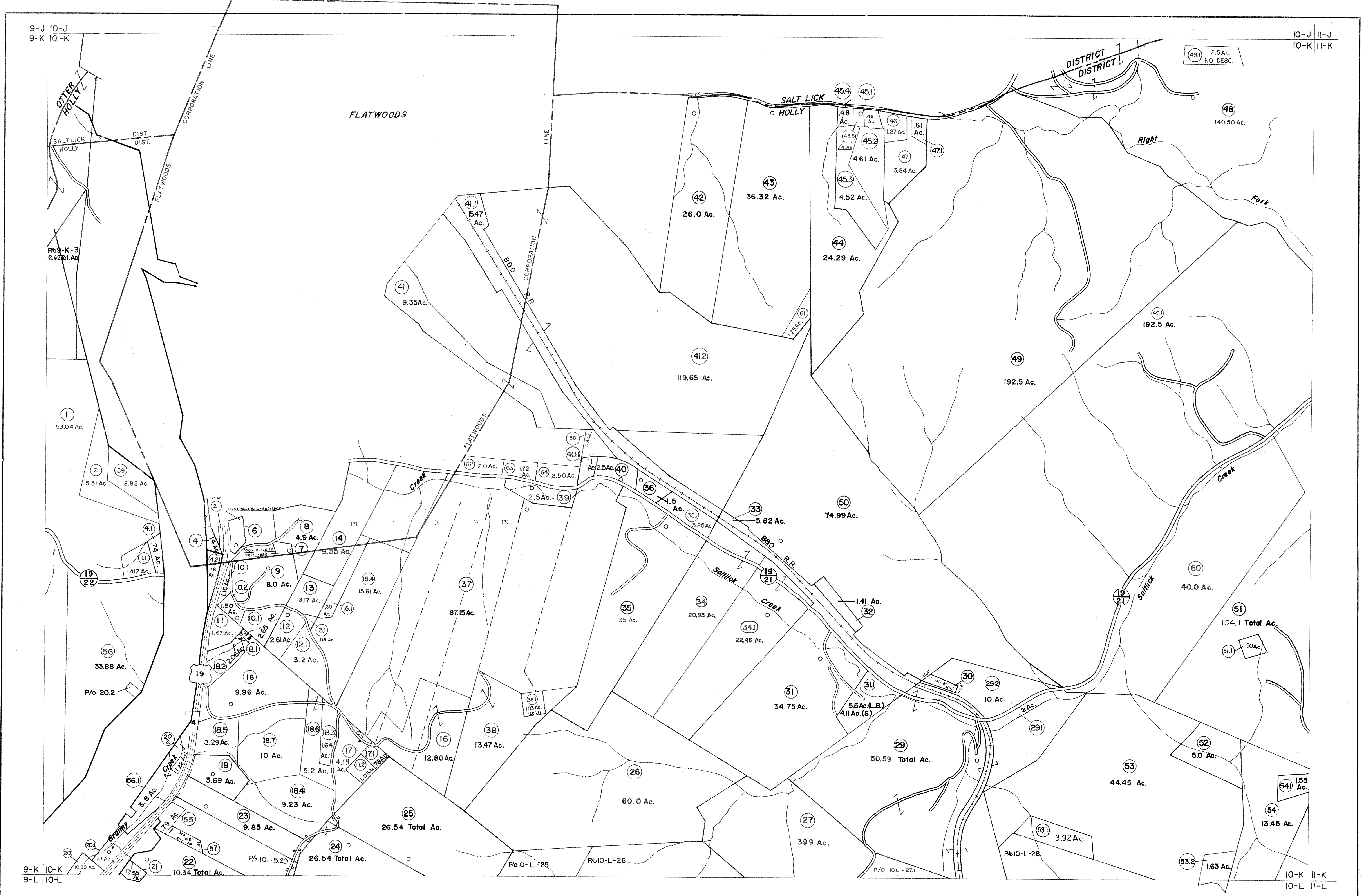


9-J 10-J
9-K 10-K

10-J 11-J
10-K 11-K



9-K 10-K
9-L 10-L

10-K 11-K
10-L 11-L

For Tax Purposes Only

Prepared by
VOGT, IVERS AND ASSOCIATES
 ENGINEERS-ARCHITECTS
 CHARLESTON, W.VA
 CINCINNATI, OHIO

Property line	---	Original lot line	---
Edge of pavement or roadway	---	Dead lot number	(15)
Corporation line	---	Parcel or index number	(99)
District line	---	Improvement	o
County line	---	Railroad	---

Revisions	
1	2-8-73 Jack Reeves
2	3-4-76 DS
3	Revised to 7-80 DS
4	7-1-84 L.E.S.
5	Revised to 7-1-84 L.E.S.
6	Revised to 7-1-84 L.E.S.
7	July, 1987 TRL
8	
9	REV. TO 1-1-88 R.E.B.
10	OGIS 2/9/91 DSH
11	EXCALIBUR GRAPHICS 5/93
12	OGIS 5/1/95 SAJ
13	O.G.I.S 6-1-96 J.E.B
14	5-1-97 J.E.B
15	4-15-98 J.E.B
16	5-1-99 J.E.B
17	ESI 4-27-00 REK
18	ESI 5/31/01 REK
19	5/2/04 S.B.H
20	5/12/05 S.B.H
21	4/9/06 S.B.H
22	
23	
24	

KEY MAP

9J 10J 11J
9K 10K 11K
9L 10L 11L

BRAXTON COUNTY
 STATE OF WEST VIRGINIA
 Office of Assessor

DISTRICT
HOLLY DISTRICT

SHEET NO: 10-K

Date, Aerial Photography: 4-20-60
 Date, Map: 9-21-62
 Photo No: BR-14-98
 Scale: 1" = 400'