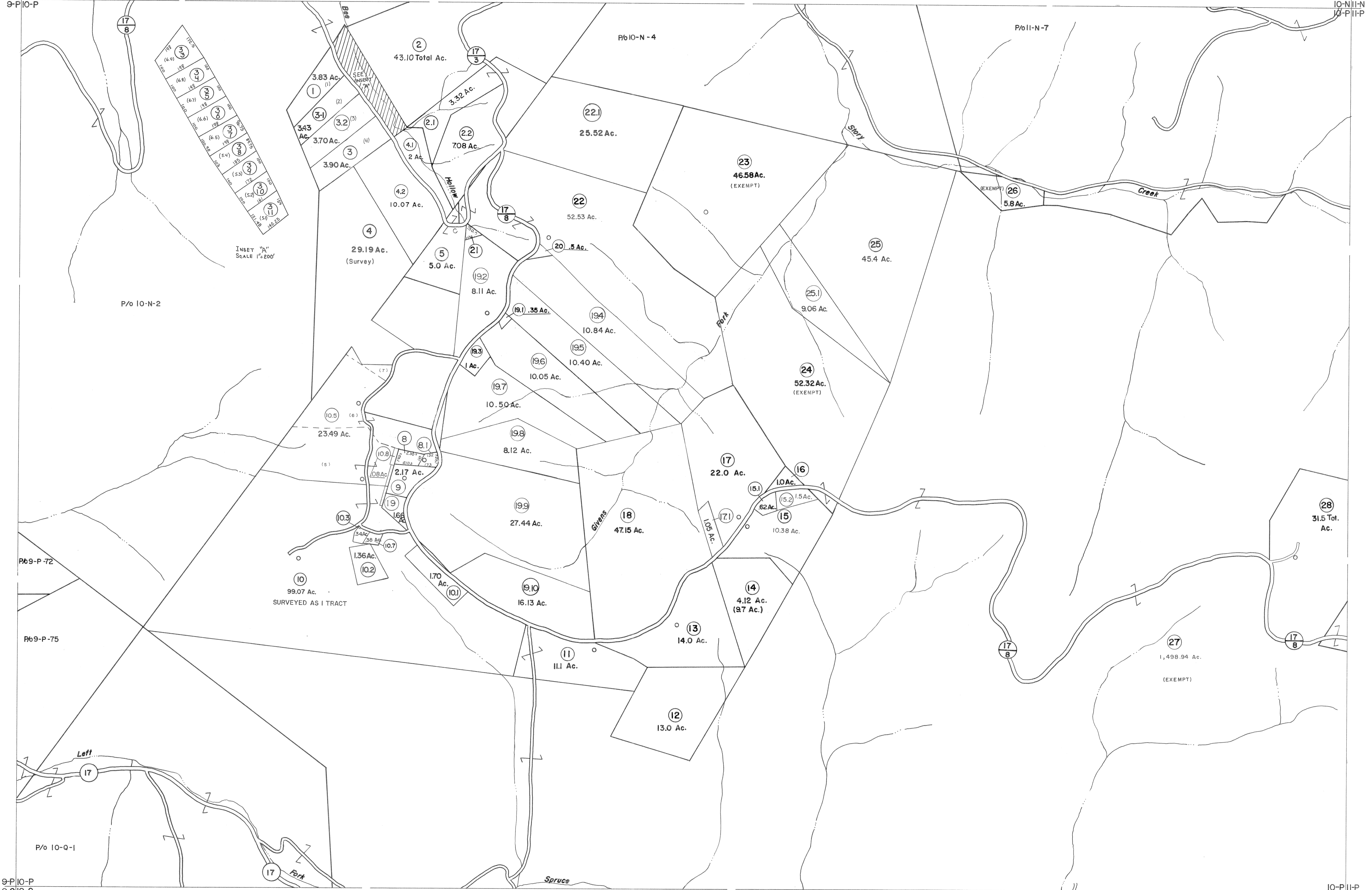


9-N|0-N  
9-P|0-P

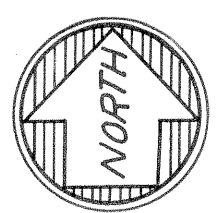
10-N|1-N  
10-P|1-P



INSET "A"  
SCALE 1"=200'

9-P|0-P  
9-Q|0-Q

10-P|1-P  
10-Q|1-Q



**For Tax Purposes Only**

Prepared by  
**VOGT, IVERS AND ASSOCIATES**  
ENGINEERS-ARCHITECTS  
CHARLESTON, W.VA.  
CINCINNATI, OHIO

Property line	—————
Edge of pavement or roadway	———
Corporation line	—————
District line	—————
County line	—————

Original lot line	-----
Deed lot number	(15)
Parcel or index number	(99)
Improvement	o
Railroad	——+——

Revisions			
1	2-8-73	Jack Reeves	9
2	Revised to 7-80	SH	10
3	"	" 7-83	11
4	7-1-84	TRL	12
5	July, 1987	LES	13
6	OGIS 2/9/91	DSH	14
7	5-1-97	J.E.B	15
8	4-15-98	J.E.B	16
9	5-1-99	J.E.B	17
10	ES1 4-27-00	REK	18
11	ES1 5/31/01	REK	19
12	4/30/03	S&H	20
13	4/24/04	S&H	21
14	4/30/05	S&H	22
15			23
16			24

**KEY MAP**

9-N|0-N|1-N  
9-P|0-P|1-P  
9-Q|0-Q|1-Q

**BRAXTON COUNTY**

STATE OF WEST VIRGINIA

Office of Assessor

DISTRICT  
**HOLLY DISTRICT**

SHEET NO: 10-P

Date, Aerial Photography: 4-22-60  
Photo No: BR-14-93  
Date, Map: 9-14-62  
Scale: 1" = 400'