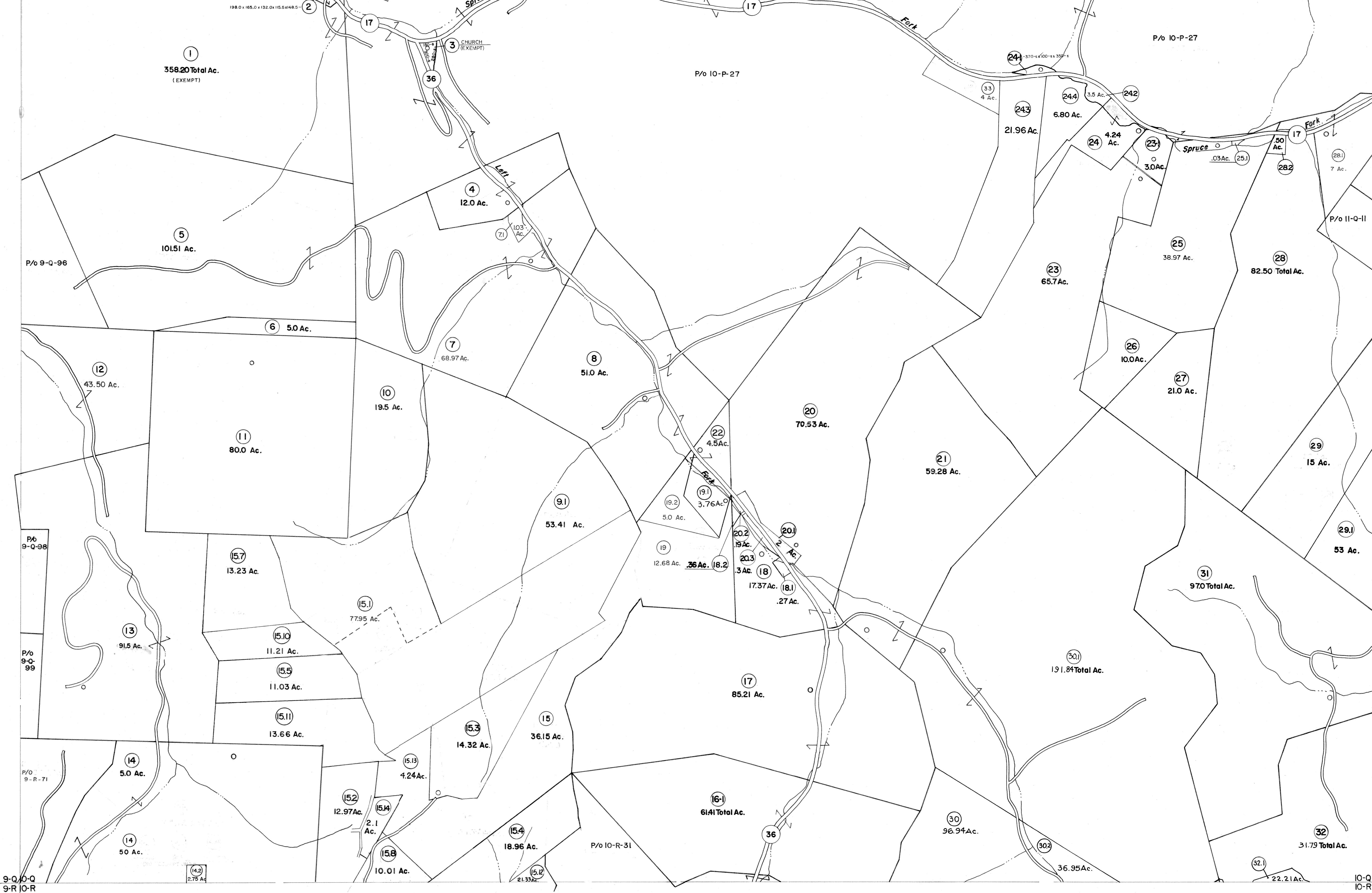


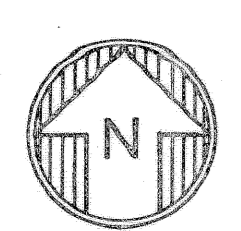
9-P 10-P
9-Q 10-Q

10-P 11-P
10-Q 11-Q



9-Q 10-Q
9-R 10-R

10-Q 11-Q
10-R 11-R



For Tax Purposes Only

Prepared by
VOGT, IVERS AND ASSOCIATES
 ENGINEERS-ARCHITECTS
 CHARLESTON, W.VA.
 CINCINNATI, OHIO

Property line	—————	Original lot line	- - - - -
Edge of pavement or roadway	—————	Deed lot number	(15)
Corporation line	—————	Parcel or index number	(2)
District line	—————	Improvement	o
County line	—————	Railroad	—————

Revisions			
1	3-5-76	DS	9
2	10-28-80	JF	10
3	Revised to 7-80	JF	11
4	" 7-1-83	CBG	12
5	7-1-84	L.E.S.	13
6	Revised to 7-85	JF	14
7	Revised to 7-1-86	JF	15
8	July, 1987	TRL	16
9	REV. TO 1-1-88	R.E.B.	17
10	OGIS 2/9/91	DSH	18
11	EXCALIBUR GRAPHICS 5/93	DSH	19
12	O.G.I.S 6-1-96	J.E.B	20
13	5-1-97	J.E.B	21
14	5-1-99	J.E.B	22
15	ESI 5/31/01	REK	23
16			24

KEY MAP
 9P 10P 11P
 9Q 10Q 11Q
 9R 10R 11R

BRAXTON COUNTY
 STATE OF WEST VIRGINIA
 Office of Assessor

DISTRICT **HOLLY DISTRICT**
 SHEET NO: **10-Q**
 Date, Aerial Photography: 4-22-62 Date, Map: 9-6-62
 Photo No: BR-14-92 Scale: 1" = 400'