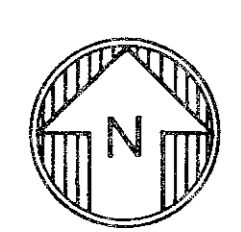
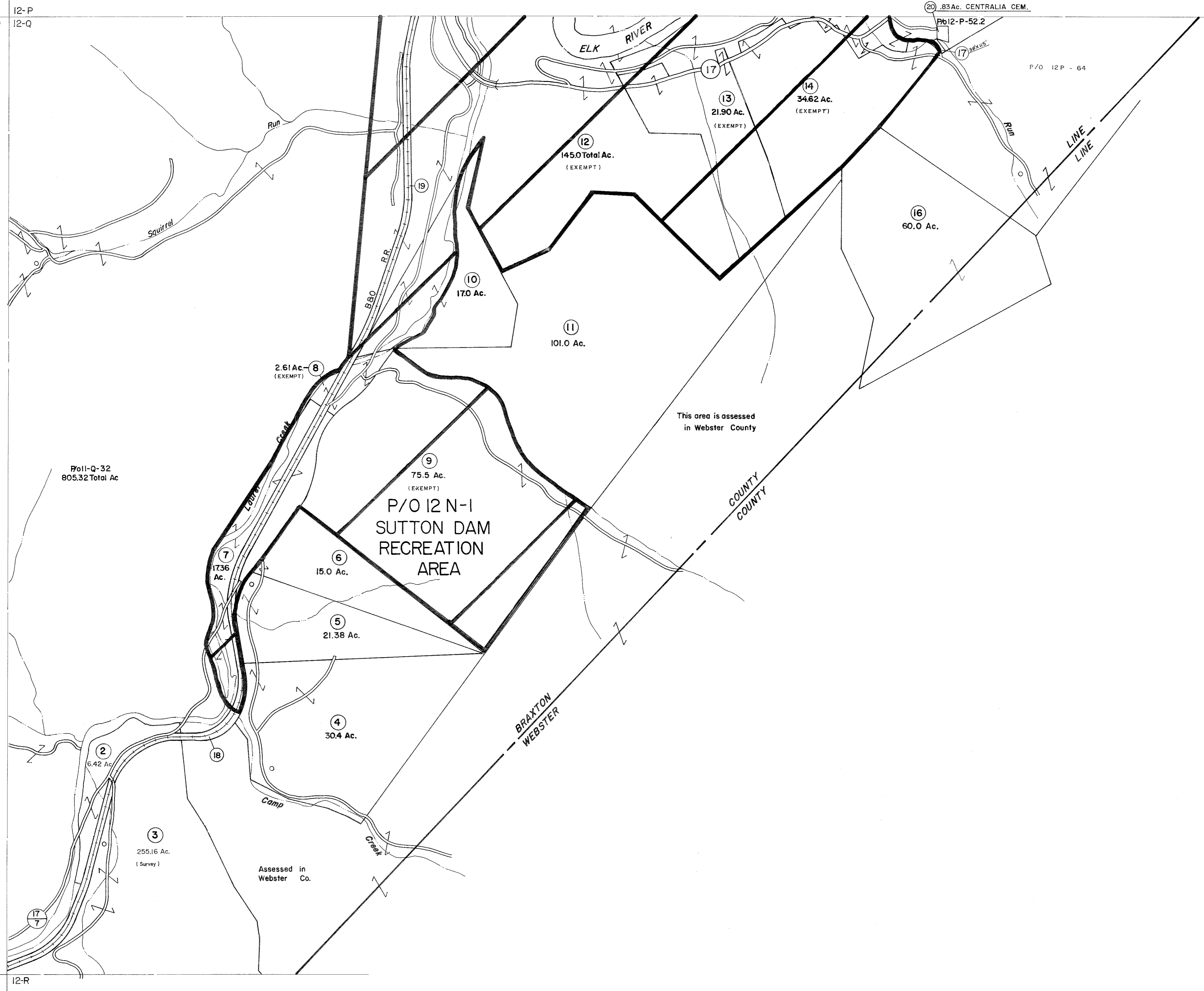


11-P 12-P
11-Q 12-Q

11-Q 12-R
11-R 12-R



For Tax Purposes Only
Prepared by
VOGT, IVERS AND ASSOCIATES
ENGINEERS-ARCHITECTS
CHARLESTON, W.VA.
CINCINNATI, OHIO

Property line	—————	Original lot line	-----
Edge of pavement or roadway	-----	Deed lot number	(15)
Corporation line	-----	Parcel or index number	(29)
District line	-----	Improvement	o
County line	-----	Railroad	+

Revisions		Revisions	
1	3-8-76 DS	9	
2	Revised to 7-80 DF	10	
3	Revised to 7-1-85 DF	11	
4	7-1-84 L.E.S.	12	
5	July, 1987 TRL	13	
6	EXCALIBUR GRAPHICS 5/93	14	
7	5-1-97 J.E.B.	15	
8	4-15-98 J.E.B.	16	
		17	
		18	
		19	
		20	
		21	
		22	
		23	
		24	

KEY MAP

11P	12P	13P
11Q	12Q	13Q
11R	12R	

BRAXTON COUNTY
STATE OF WEST VIRGINIA
Office of Assessor

DISTRICT	HOLLY DISTRICT
SHEET NO:	12-Q
Date, Aerial Photography:	4-20-60
Photo No:	BR-14-52
Date, Map:	9-24-62
Scale:	1" = 400'