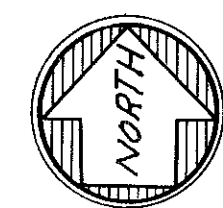
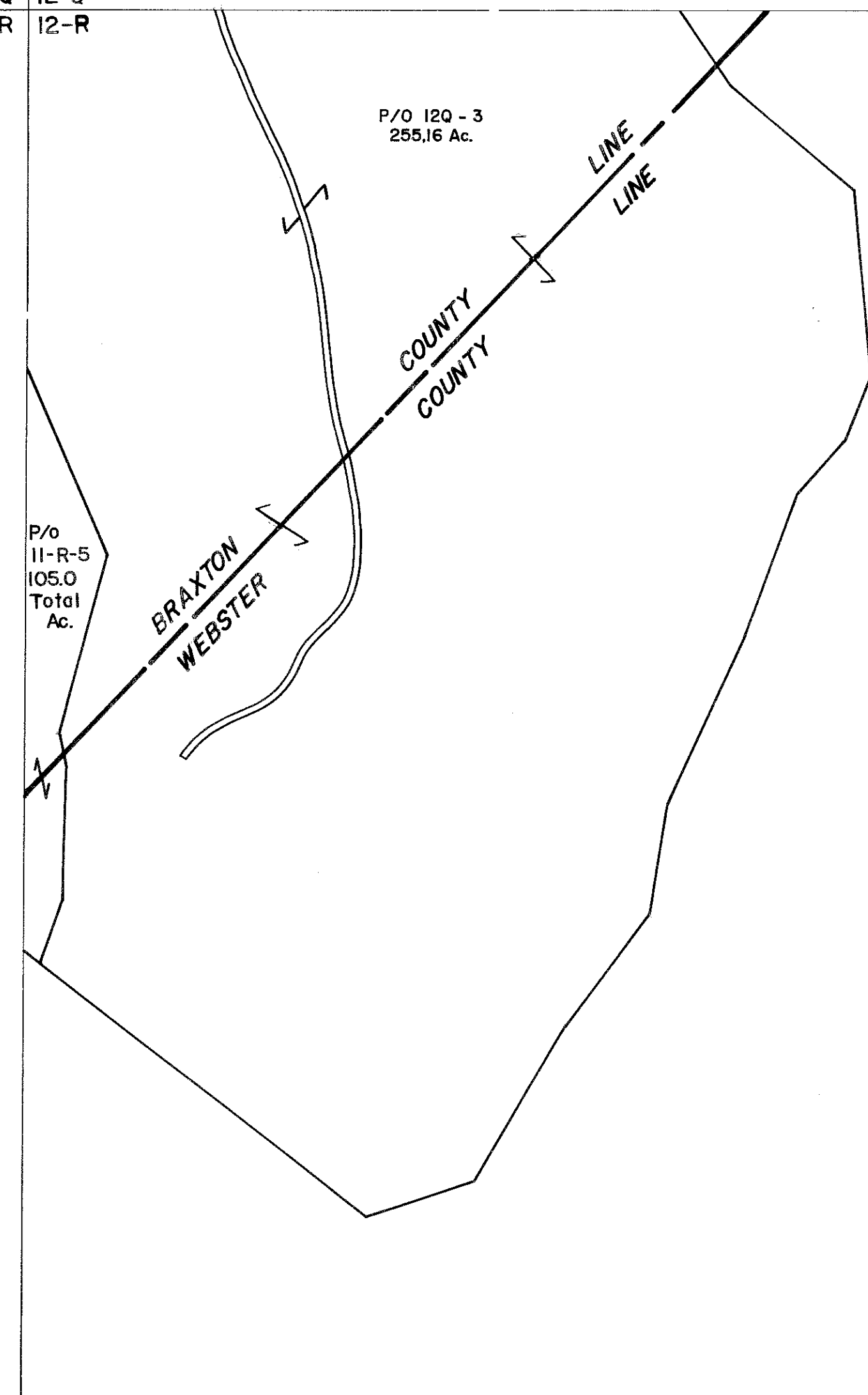


II-Q 12-Q
II-R 12-R



For Tax Purposes Only

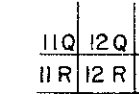
Prepared by
VOGT, IVERS AND ASSOCIATES
ENGINEERS-ARCHITECTS
CHARLESTON, W.VA.
CINCINNATI, OHIO

Property line
Edge of pavement or roadway
Corporation line
District line
County line

Original lot line
Deed lot number
Parcel or index number
Improvement
Railroad

Revisions	
1	Revised to 280
2	" " 7-1-83
3	7-1-84 L.E.S.
4	4-15-98 J.E.B.
5	
6	
7	
8	

KEY MAP



BRAXTON COUNTY

STATE OF WEST VIRGINIA
Office of Assessor

DISTRICT
HOLLY DISTRICT

SHEET NO: 12-R

Date, Aerial Photography: 4-22-60 Date, Map: 8-2-62
Photo No: BR-14-52 Scale: 1" = 400'