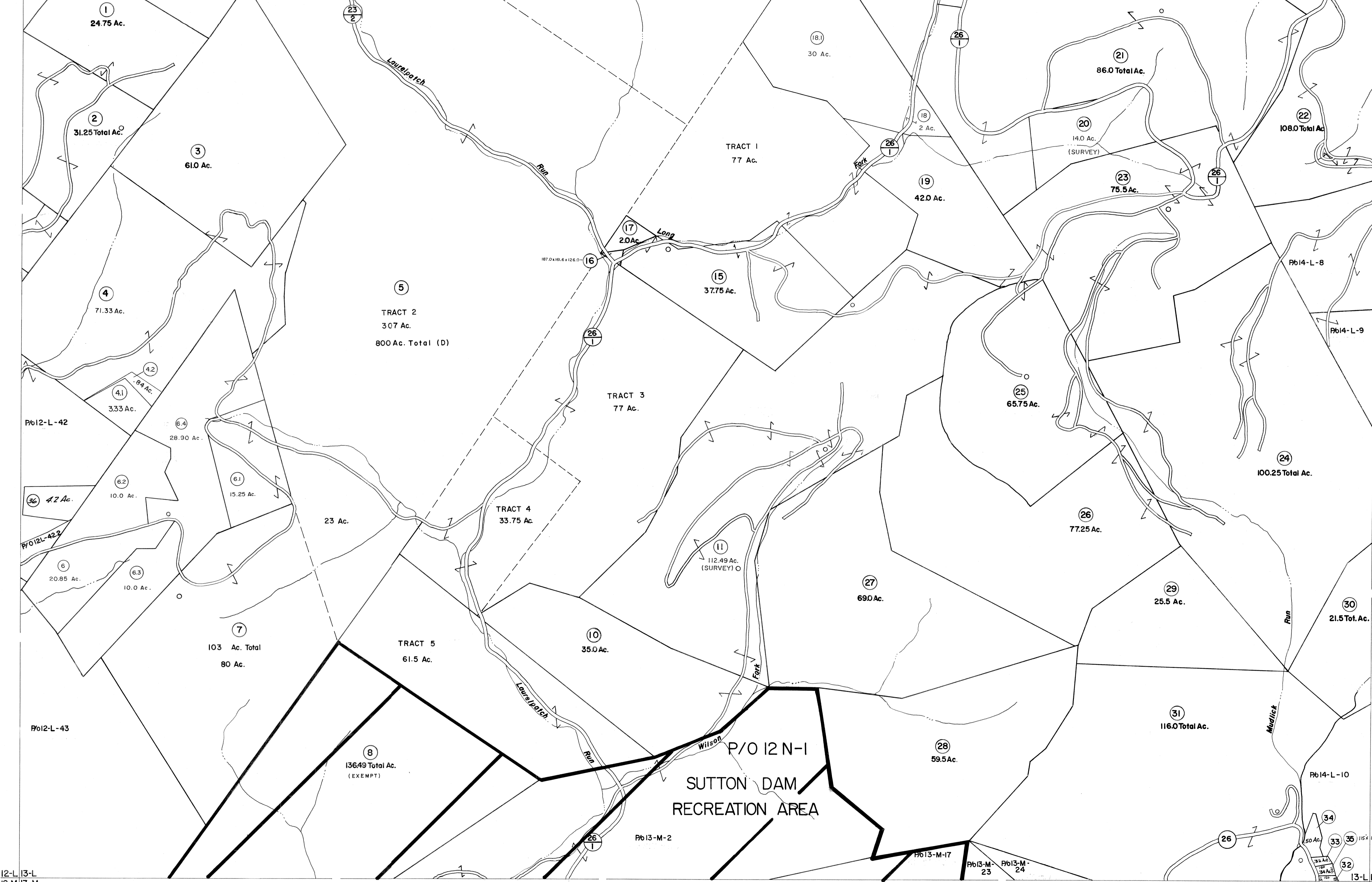


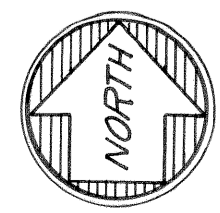
12-K|3-K
12-L|3-L

13-K|14-K
13-L|14-L



12-L|13-L
12-M|13-M

13-L|14-L
13-M|14-M



For Tax Purposes Only

Prepared by
VOGT, IVERS AND ASSOCIATES
 ENGINEERS-ARCHITECTS
 CHARLESTON, W.VA.
 CINCINNATI, OHIO

Property line —————
 Edge of pavement or roadway ————
 Corporation line - - - - -
 District line - - - - -
 County line - - - - -

Original lot line - - - - -
 Dead lot number (15)
 Parcel or index number (16)
 Improvement (17)
 Railroad

Revisions			
1	3-8-76 DS	9	ESI 6/14/02 REK
2	Revised to 7-80	10	4/26/05 SBH
3	Revised to 7-83	11	4/9/06 SBH
4	7-1-84 L.E.S.	12	
5	July 1987 TRL	13	
6	Rev. to 1-1-88 R.E.B.	14	
7	O.G.I.S 6-1-96 J.E.B.	15	
8	5-1-97 J.E.B.	16	

KEY MAP
 12K|13K|14K
 12L|13L|14L
 12M|13M|14M

BRAXTON COUNTY
 STATE OF WEST VIRGINIA
 Office of Assessor

DISTRICT
HOLLY DISTRICT

SHEET NO: **13-L**

Date, Aerial Photography: **4-22-60** Date, Map: **9-20-62**
 Photo No: **BR-14-46** Scale: **1" = 400'**