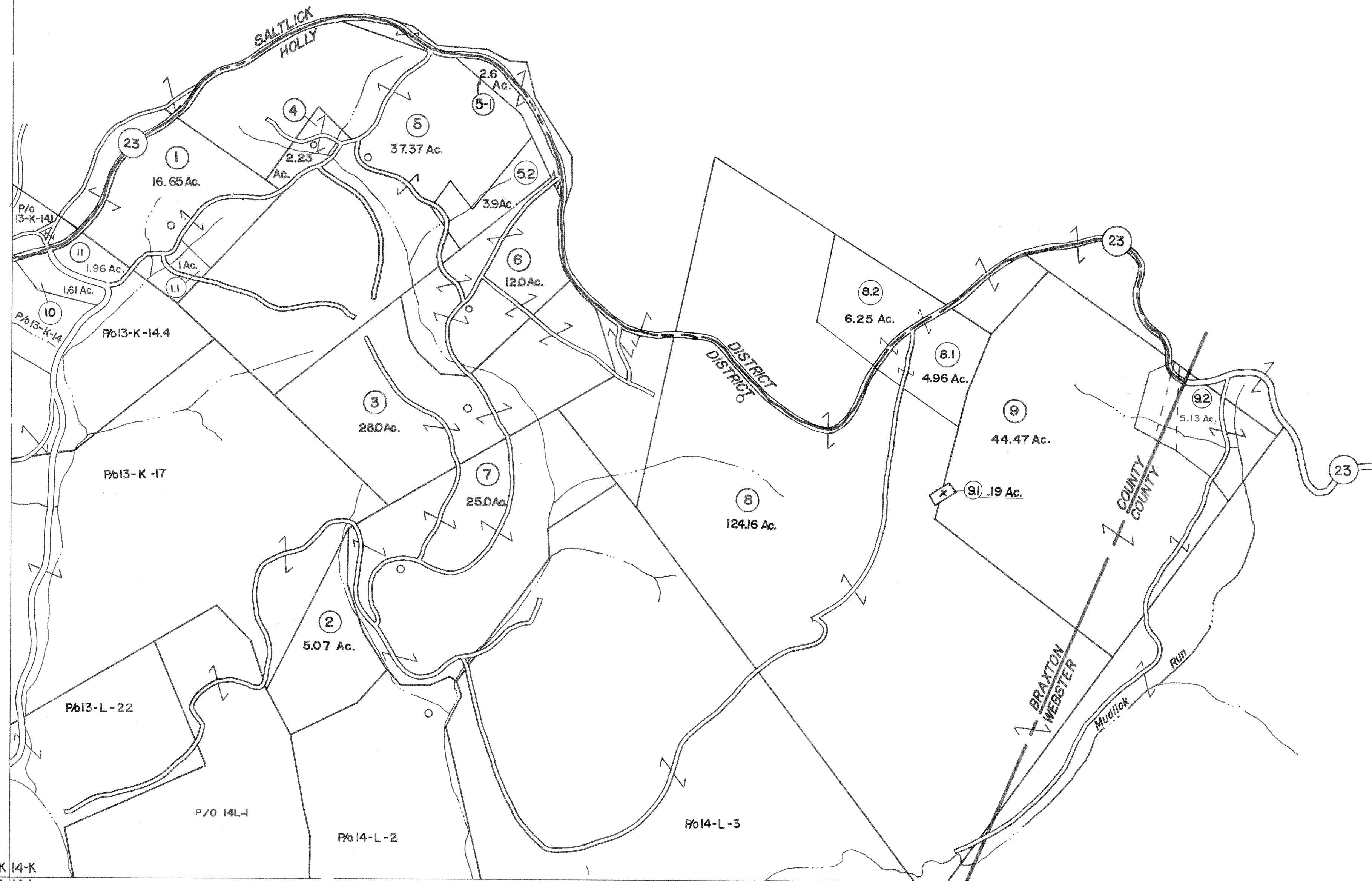
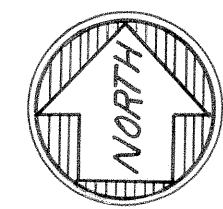


13-J 14-J
13-K 14-K



13-K 14-K
13-L 14-L



For Tax Purposes Only

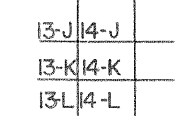
Prepared by
VOGT, IVERS AND ASSOCIATES
ENGINEERS-ARCHITECTS
CHARLESTON, W.VA.
CINCINNATI, OHIO

Property line _____
Edge of pavement or roadway - - - - -
Corporation line - - - - -
District line - - - - -
County line - - - - -

Original lot line - - - - -
Deed lot number (15) _____
Parcel or index number (9) _____
Improvement (o) _____
Railroad - - - - -

Revisions	
1	3-8-76 DS
2	Revised to 7-89 JEF
3	" " 7-1-83 JEF
4	7-1-84 L.E.S.
5	July, 1987 TRL
6	OGIS 2/10/91 DSH
7	EXCALIBUR GRAPHICS 5/93
8	O.G.I.S. 6-1-96 J.E.B.
9	ESI 5/31/01 REK
10	ESI 6/14/02 REK
11	4/30/03 S & H
12	4/26/05 S & H
13	
14	
15	
16	
17	
18	
19	
20	
21	
22	
23	
24	

KEY MAP



BRAXTON COUNTY

STATE OF WEST VIRGINIA

Office of Assessor

DISTRICT

HOLLY DISTRICT

SHEET NO: 14-K

Date, Aerial Photography: 4-22-60
Photo No: BR-14-19

Date, Map: 8-6-62
Scale: 1" = 400'