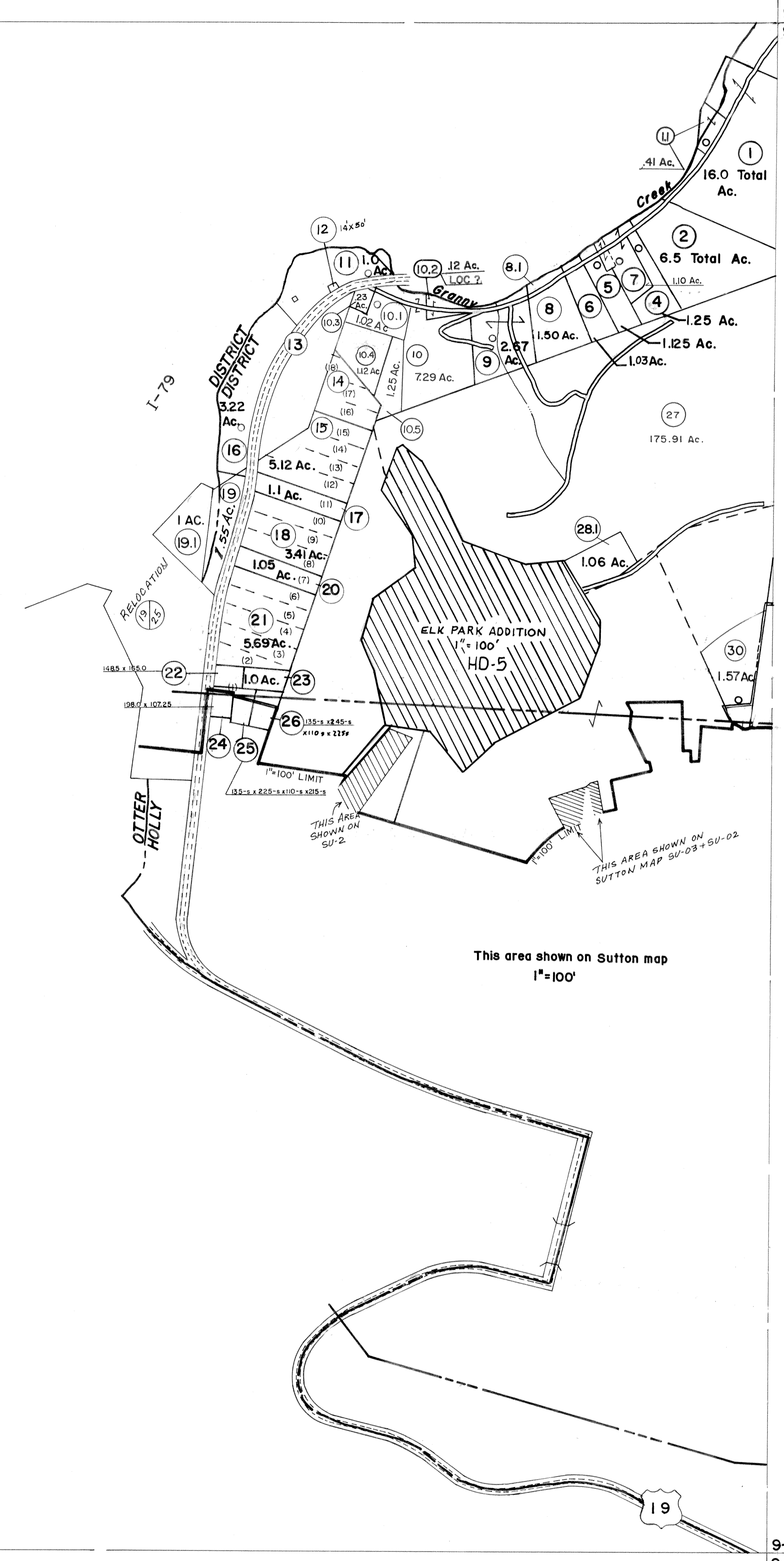
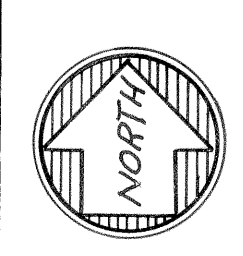


8-M

9-L  
9-M



9-M  
9-N



For Tax Purposes Only  
 Prepared by  
**VOGT, IVERS AND ASSOCIATES**  
 ENGINEERS-ARCHITECTS  
 CHARLESTON, W.VA.  
 CINCINNATI, OHIO

Property line	—————
Edge of pavement or roadway	—————
Corporation line	—————
District line	—————
County line	—————

Original lot line	-----
Deed lot number	(15)
Parcel or index number	(9)
Improvement	o
Railroad	—+—+—+—

Revisions			
1	3-3-76	DS	9
2	Revised to 7-80	DS	10
3	" " 7-1-83	DS	11
4	7-1-84	L.E.S.	12
5	Revised to 7-1-86	DS	13
6	July, 1987	TRL	14
7	OGIS 2/18/91	DSH	15
8			16
9	EXCALIBUR GRAPHICS	5/93	17
10	OGIS	4/29/95 SAJ	18
11	O.G.I.S	6-1-96 J.E.B	19
12		5-1-97 J.E.B	20
13		4-15-98 J.E.B	21
14		5-1-99 J.E.B	22
15	ESI	4-27-00 REK	23
16			24

KEY MAP

9L
8M 8N
9N

**BRAXTON COUNTY**  
 STATE OF WEST VIRGINIA  
 Office of Assessor

DISTRICT	HOLLY DISTRICT
SHEET NO:	8-M
Date, Aerial Photography:	4-20-60
Photo No:	BR-14-136
Date, Map:	9-17-62
Scale:	1" = 400'