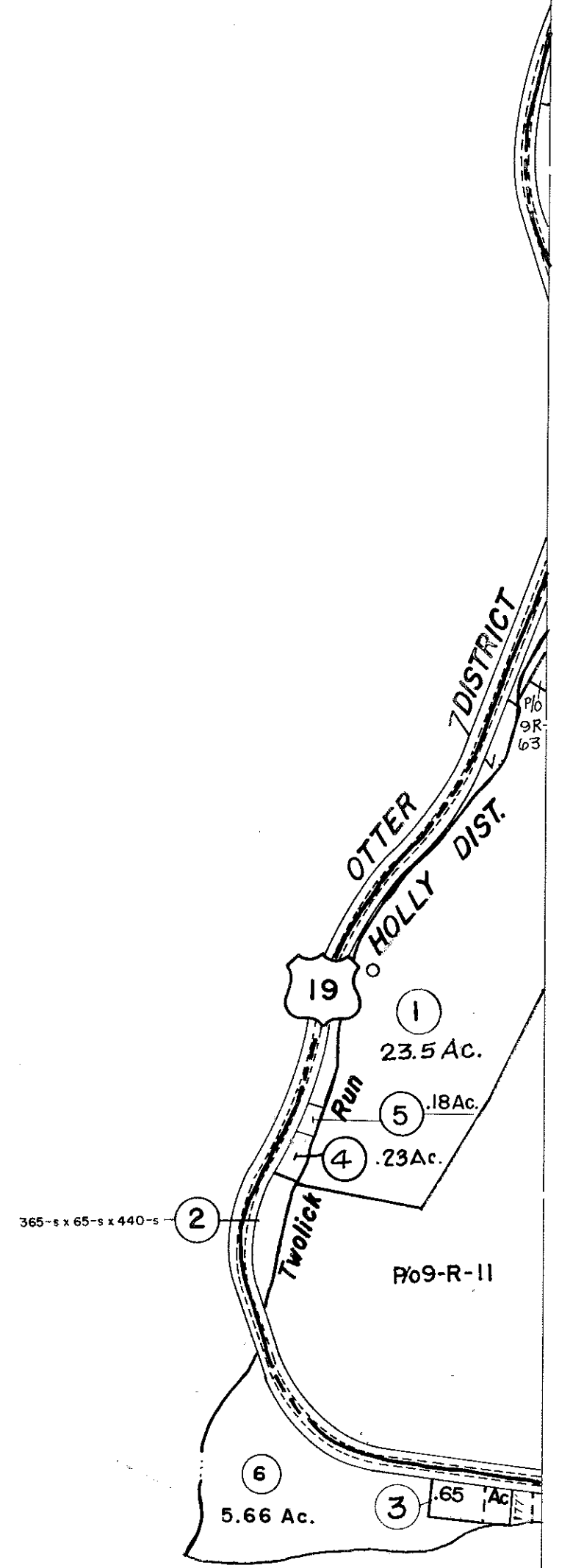


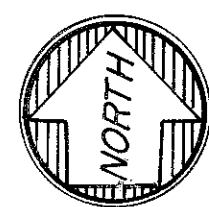
8-R

9-Q  
8-R 9-R



8-R

8-R 9-R  
9-S



For Tax Purposes Only

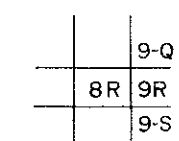
Prepared by  
**VOGT, IVERS AND ASSOCIATES**  
 ENGINEERS-ARCHITECTS  
 CHARLESTON, W.VA.  
 CINCINNATI, OHIO

Property line ————  
 Edge of pavement or roadway - - - - -  
 Corporation line - - - - -  
 District line - - - - -  
 County line - - - - -

Original lot line - - - - -  
 Deed lot number (15) ○  
 Parcel or index number (15) ○  
 Improvement ○  
 Railroad ○

Revisions	
1	3-3-76 DS 9
2	Revised 7-1-80 DS 10
3	" " 7-1-83 DS 11
4	7-1-84 L.E.S. 12
5	July, 1987 TRL 13
6	REV. TO 1-1-88 R.E.B. 14
7	5-1-99 J.E.B. 15
8	

KEY MAP



BRAXTON COUNTY

STATE OF WEST VIRGINIA

Office of Assessor

DISTRICT

HOLLY DISTRICT

SHEET NO: 8-R

Date, Aerial Photography: 4-22-60 Date, Map: 9-15-62  
 Photo No: BR-14-132 Scale: 1" = 400'