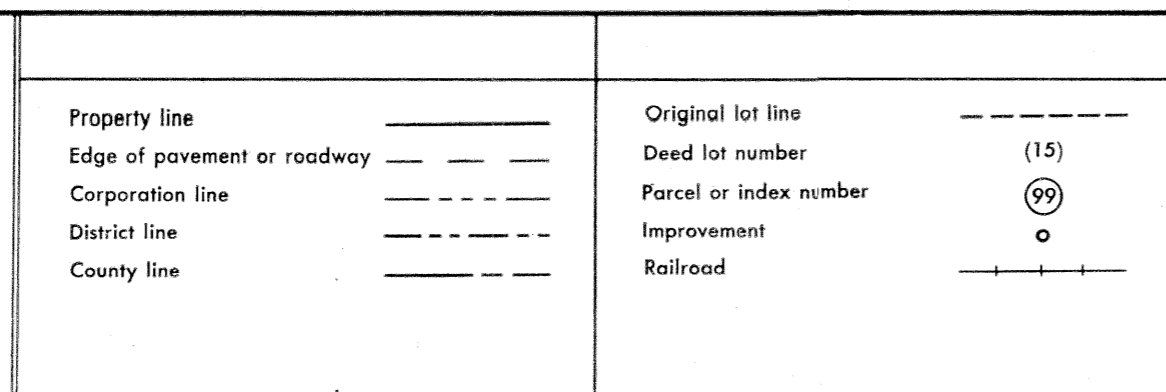


For Tax Purposes Only

Prepared by  
**VOGT, IVERS AND ASSOCIATES**  
 ENGINEERS-ARCHITECTS  
 CHARLESTON, W.VA.  
 CINCINNATI, OHIO



Revisions			
1	3-4-76	DS	9
2	Revised to 7-80	OGIS	2/9/91 DSH
3	" " " 7-83	EXCALIBUR GRAPHICS	5/93
4	7-1-84	OGIS	5/3/95 SAJ
5	Revised to 7-1-84	O.G.I.S.	6-1-96 J.E.B
6	Revised to 7-1-84		5-1-97 J.E.B
7	July, 1987		4-15-98 J.E.B
8	Revised to 1-1-88		5-1-99 J.E.B
			4/12/07
			ESI 4-27-00 REK

KEY MAP

8Q 30 100  
 8R 30 100  
 8S 30 100

**BRAXTON COUNTY**  
 STATE OF WEST VIRGINIA  
 Office of Assessor

DISTRICT **HOLLY DISTRICT**

SHEET NO: **9-R**

Date, Aerial Photography: 4-22-60  
 Photo No: BR-14-126

Date, Map: 9-13-62  
 Scale: 1" = 400'