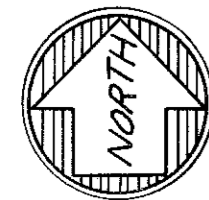
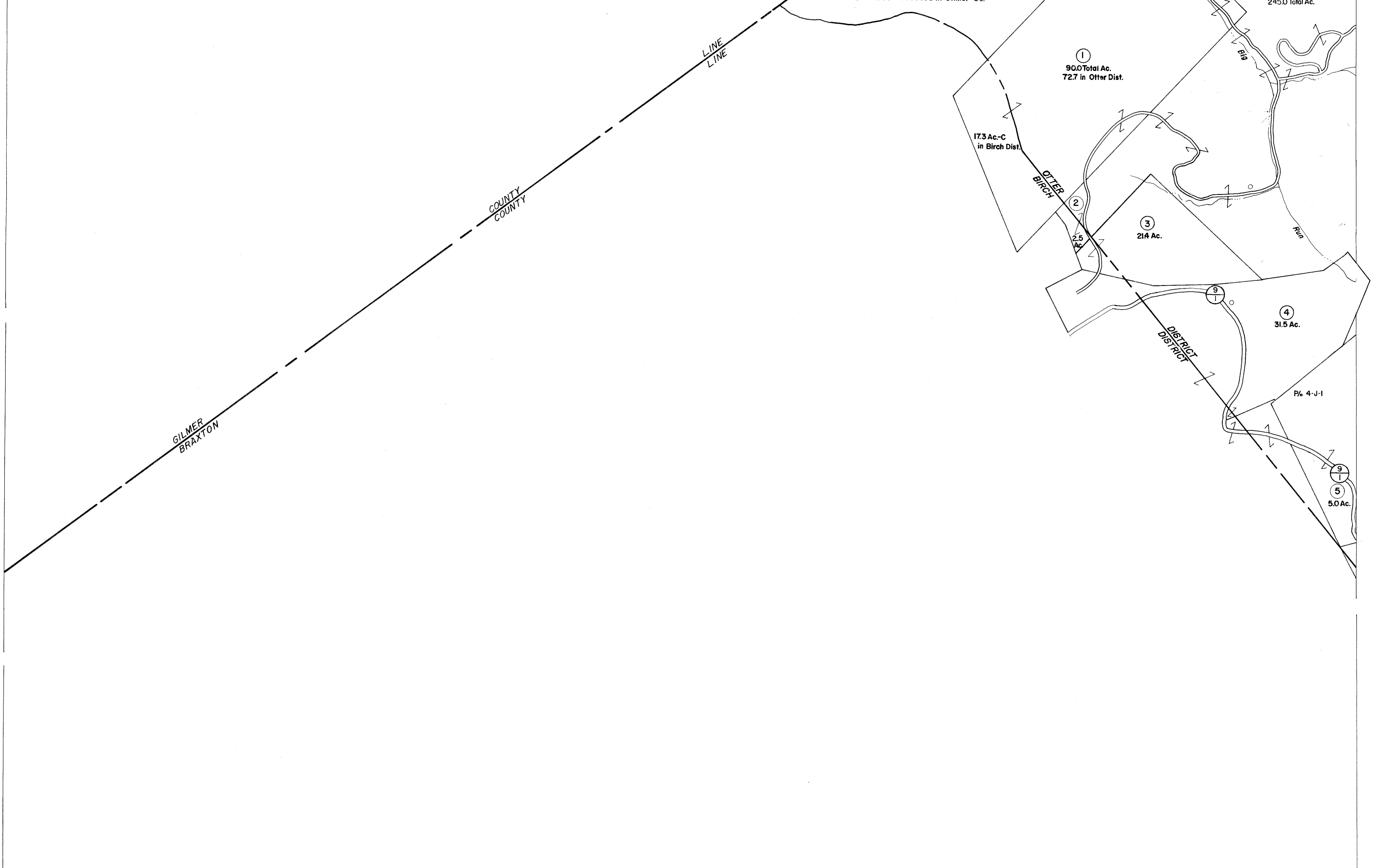


3-H  
3-J

3-H 4-H  
3-J 4-J

3-J

3-J 4-J  
4-K



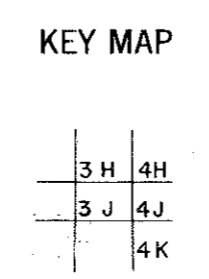
For Tax Purposes Only

Prepared by  
**VOGT, IVERS AND ASSOCIATES**  
ENGINEERS-ARCHITECTS  
CHARLESTON, W.VA.  
CINCINNATI, OHIO

Property line	—————
Edge of pavement or roadway	—————
Corporation line	—————
District line	—————
County line	—————

Original lot line	—————
Deed lot number	(15)
Parcel or index number	(9)
Improvement	o
Railroad	—————

Revisions	
1	Revised to 7-1-80
2	7-1-82
3	7/1/84 RLB
4	Revised to 7-1-84
5	
6	
7	
8	
9	
10	
11	
12	
13	
14	
15	
16	
17	
18	
19	
20	
21	
22	
23	
24	



**BRAXTON COUNTY**

STATE OF WEST VIRGINIA

Office of Assessor

DISTRICT  
**OTTER DISTRICT**

SHEET NO: 3-J

Date, Aerial Photography: 4-22-60  
Photo No: BR-22-9

Date, Map: 9-5-62  
Scale: 1" = 400'