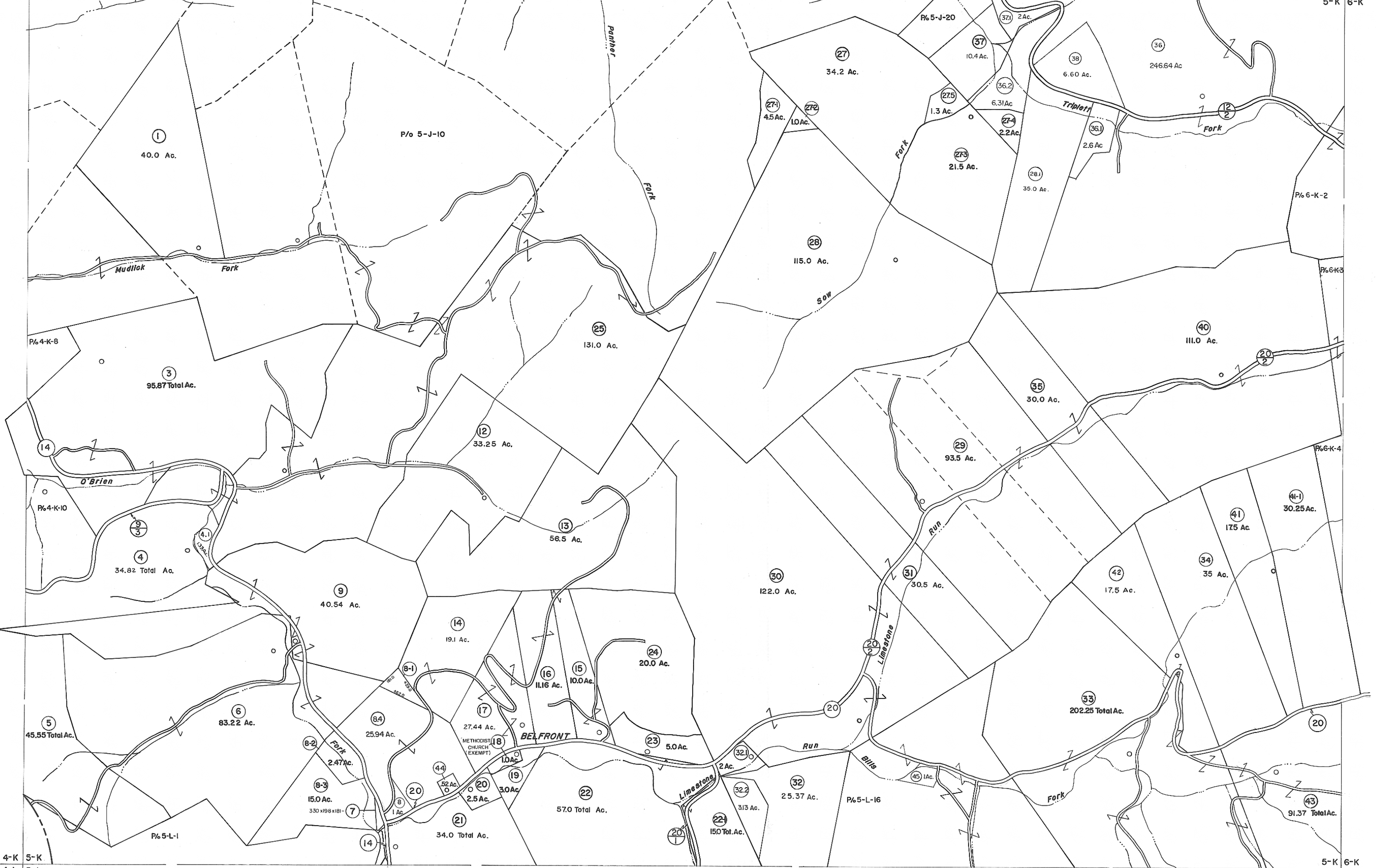


4-J 5-J  
4-K 5-K

5-J 6-J  
5-K 6-K



4-K 5-K  
4-L 5-L

5-K 6-K  
5-L 6-L

**For Tax Purposes Only**

Prepared by  
**VOGT, IVERS AND ASSOCIATES**  
 ENGINEERS-ARCHITECTS  
 CHARLESTON, W.VA.  
 CINCINNATI, OHIO

Property line	—————	Original lot line	-----
Edge of pavement or roadway	-----	Deed lot number	(15)
Corporation line	-----	Parcel or index number	○
District line	-----	Improvement	○
County line	-----	Railroad	—+—+—+—

Revisions			
1	PARCELS 8-1,8-2,8-3,11-1,11-2,	9	O.G.I.S 1-1-95 J.E.B 17 6/9/12 SBH
2	27-1,27-2,27-3,27-4,41-1,22-1,	10	OGIS 5/8/95 SAJ 18 4/2/13 SBH
3	ADDED 6-11-63	11	5-1-97 J.E.B 19
4	Revised to 7-1-80	12	ESI 5/24/01 REK 20
5	" " 7-1-83	13	ESI 6/11/02 REK 21
6	7/1/84	14	4/9/06 SBH 22
7	Revised to 7-1-87	15	3-19-10 445 23
8	Revised to 1-1-88	16	

**KEY MAP**

4-J	5-J	6-J
4-K	5-K	6-K
4-L	5-L	6-L

**BRAXTON COUNTY**  
 STATE OF WEST VIRGINIA  
 Office of Assessor

DISTRICT  
**OTTER DISTRICT**

SHEET NO: **5-K**

Date, Aerial Photography: 4-22-60 Date, Map: 9-3-62  
 Photo No: BR-14-187 Scale: 1" = 400'