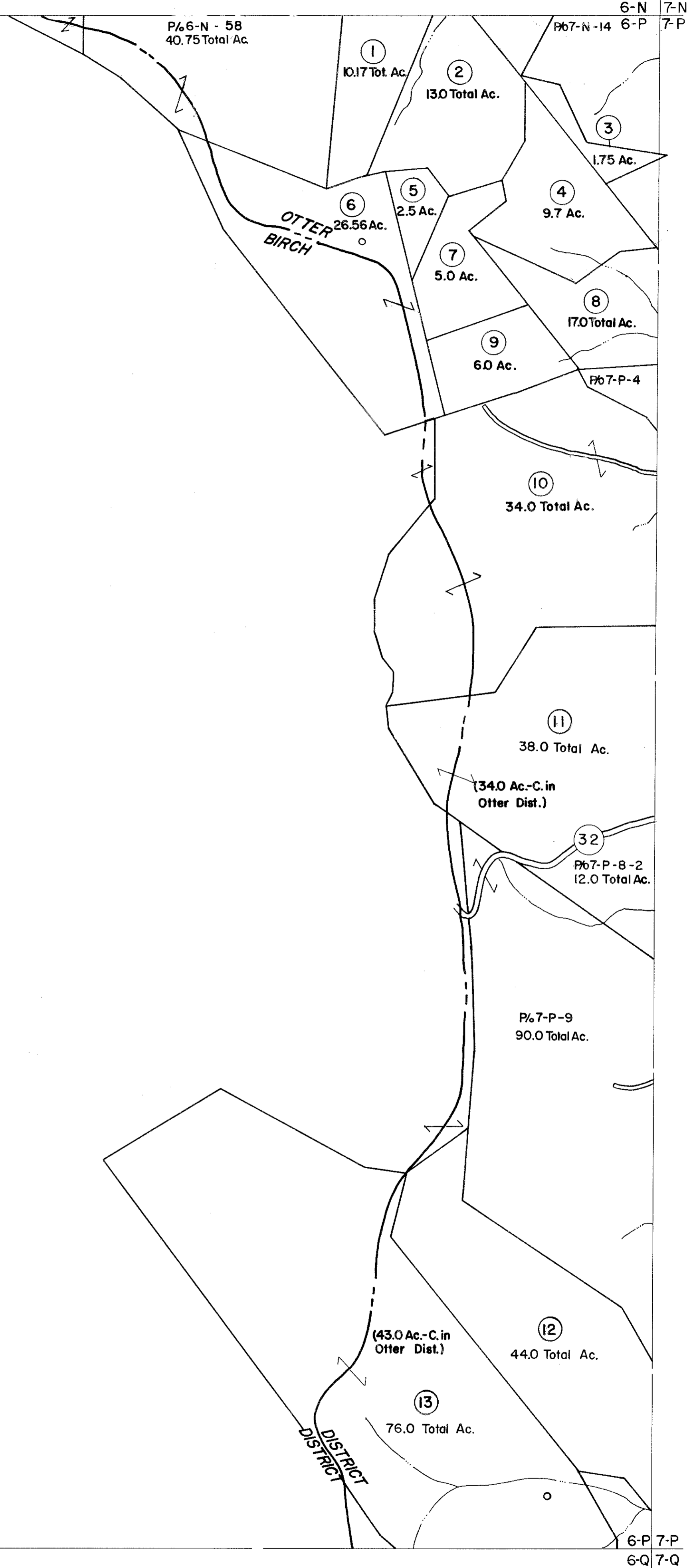


6-N  
6-P

6-N  
7-P

6-P  
6-Q

6-P  
7-Q



**For Tax Purposes Only**

Prepared by  
**VOGT, IVERS AND ASSOCIATES**  
 ENGINEERS-ARCHITECTS  
 CHARLESTON, W.VA.  
 CINCINNATI, OHIO

Property line	—————
Edge of pavement or roadway	———
Corporation line	-----
District line	-----
County line	-----

Original lot line	-----
Deed lot number	(15)
Parcel or index number	(15)
Improvement	o
Railroad	—+—+—+—

Revisions	
1	Revised to 7-1-80 RLB
2	" " 7-1-83 OCB
3	7/1/84 RLB
4	Revised to 7-1-87 RLB
5	
6	
7	
8	

**KEY MAP**

6N	7N
6P	7P
6Q	7Q

**BRAXTON COUNTY**  
 STATE OF WEST VIRGINIA  
 Office of Assessor

DISTRICT  
**OTTER DISTRICT**

SHEET NO: **6-P**

Date, Aerial Photography: 4-22-60 Date, Map: 9-10-62  
 Photo No: BR-14-169 Scale: 1" = 400'